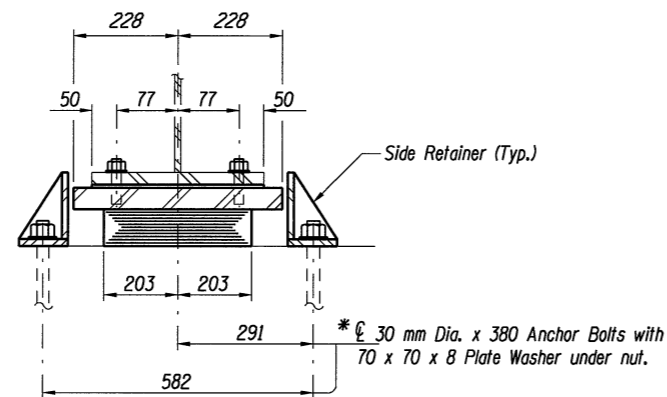
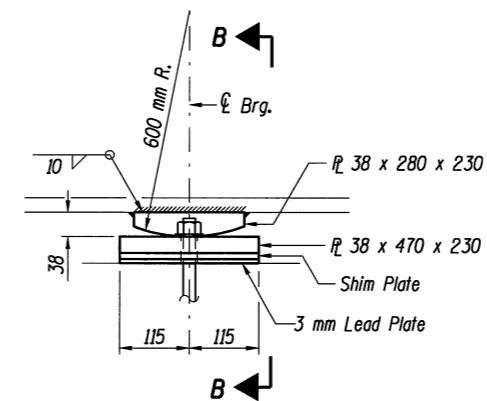


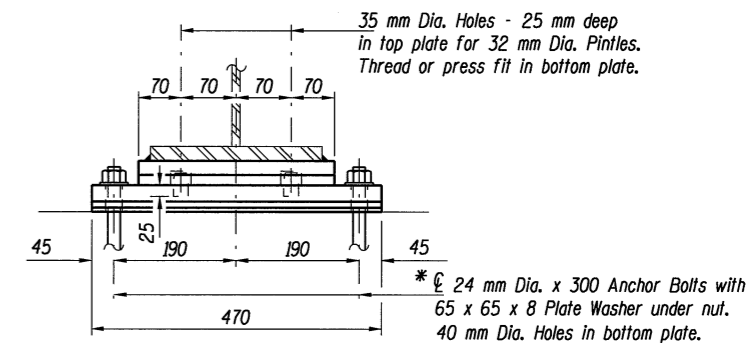
ELEVATION AT PIER



SECTION A-A



ELEVATION AT PIER



SECTION B-B

FIXED BEARING

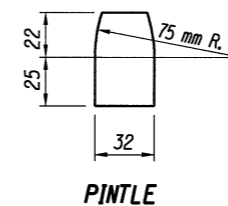
TYPE I ELASTOMERIC EXP. BRG.

Notes:
 All dimensions are in millimeters (mm) except as noted.
 Top plate of elastomeric bearing assembly and top and bottom bearing plates of fixed bearing shall be AASHTO M270M Grade 345.

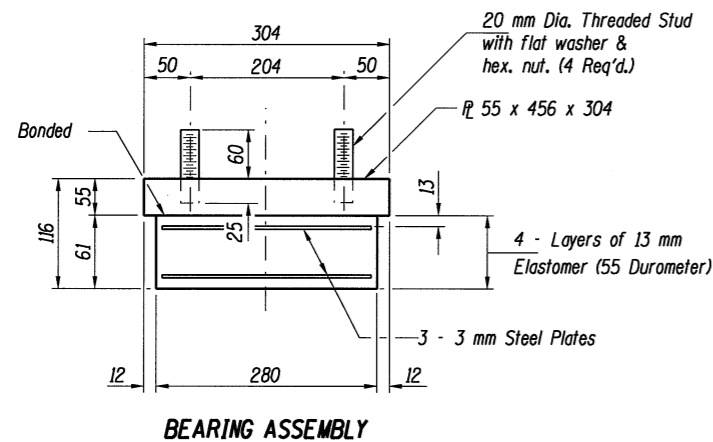
Anchor bolts shall be ASTM F1554 all-thread (or an Engineer-approved alternate material) of the grade(s) and diameter(s) specified. ASTM A307 Grade C anchor bolts may be used in lieu of ASTM F1554 Grade 250 (Fy=248MPa). The corresponding specified grade of AASHTO M314 anchor bolts may be used in lieu of ASTM F1554.

Anchor bolts at fixed bearings may be either cast in place or installed in holes drilled after the supported member is in place.
 Anchor bolts for side retainers may be cast in place or installed in holes drilled before or after members are in place.

Drilled and set anchor bolts shall be installed according to Article 521.06 of the Standard Specifications
 Side retainers and other steel members required for the bearing assembly shall be included in the cost of Elastomeric Bearing Assembly, Type I.

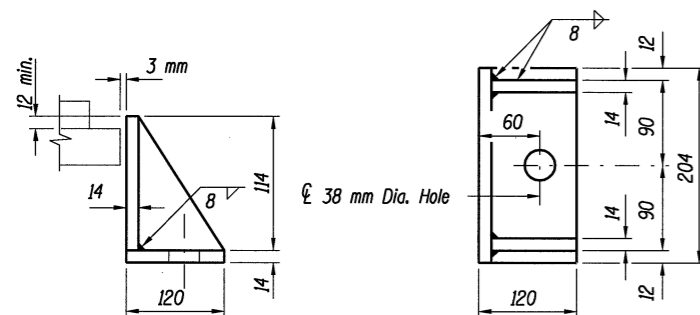


PINTLE



BEARING ASSEMBLY

Note: Shim plates shall not be placed under Bearing Assembly.



SIDE RETAINER

Equivalent rolled angle with stiffeners will be allowed in lieu of welded plates. Mass included with Structural Steel.

BILL OF MATERIAL

Item	Unit	Total
Elastomeric Bearing Assembly, Type I	Each	18
Anchor bolts, M30	Each	36
Anchor bolts, M24	Each	108

BEARING DETAILS
 F.A.I. 55 OVER LINDEN STREET
 SECTION (57-4HB-3)BR
 STRUCTURE NO. 057-0235 (N.B.) & 057-0236 (S.B.)
 McLEAN COUNTY
 STATION 38+544.044

© Copyright Hanson Professional Services Inc. 2003



JOB NO.
94S2063
DATE
03/26/04

\$ TIME \$
8/16/2009
\$ FILE \$

LAYOUT	G.L.C.	11/5/97
DRAWN	D.A.N.	11/5/97
REVIEWED		**/ **/ **