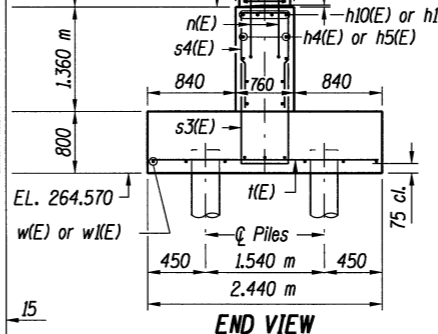
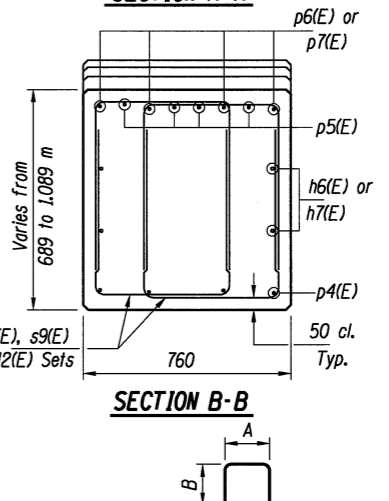
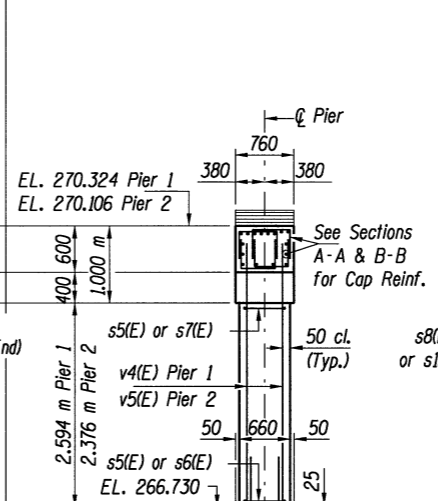


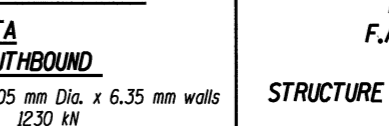
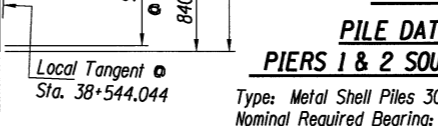
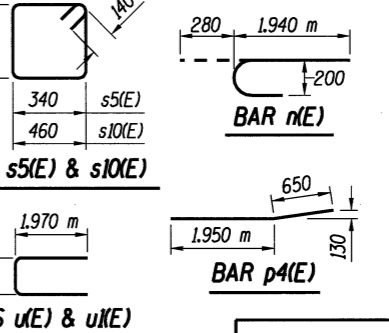
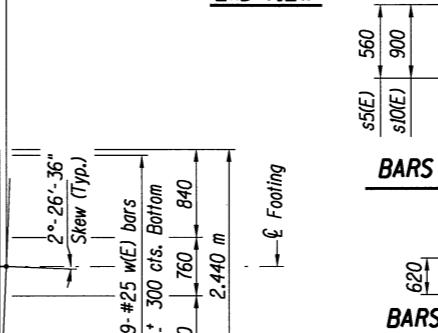
**BILL OF MATERIAL
PIERS 1 & 2 - SOUTHBOUND**

Bar	No.	Size	Length (m)	Shape	
h4(E)	16	#15	7.18	—	
h5(E)	16	#15	7.53	—	
h6(E)	8	#15	8.01	—	
h7(E)	8	#15	10.78	—	
h8(E)	4	#15	1.91	—	
h9(E)	4	#15	6.94	—	
h10(E)	8	#30	8.44	—	
h11(E)	8	#30	8.79	—	
n(E)	112	#25	2.22	—	
p2(E)	8	#30	6.10	—	
p3(E)	8	#30	8.88	—	
p4(E)	16	#15	2.60	—	
p5(E)	16	#30	5.00	—	
p6(E)	8	#30	8.01	—	
p7(E)	8	#30	10.78	—	
s3(E)	176	#20	4.40	□	
s4(E)	176	#20	3.22	□	
s5(E)	120	#15	2.08	□	
s6(E)	64	#15	2.32	□	
s7(E)	144	#15	2.60	□	
s8(E)	48	#15	1.46	□	
s9(E)	96	#15	1.78	□	
s10(E)	148	#15	3.00	□	
s11(E)	62	#15	1.56	□	
s12(E)	96	#15	2.04	□	
t(E)	122	#25	2.34	—	
u(E)	12	#20	4.56	□	
w(E)	20	#15	4.56	□	
v4(E)	56	#25	3.21	—	
v5(E)	56	#25	3.00	—	
w(E)	18	#25	8.43	—	
w1(E)	18	#25	8.78	—	
Reinforcement Bars, Epoxy Coated				kg	14,260
Concrete Structures				m ³	150.7
Structure Excavation				m ³	228
Furnishing Metal Shell Piles 305mm x 6.35 mm				m	429
Driving Piles				m	429
Test Pile Metal Shells				Each	1



BARS s3(E), s4(E), s6(E), s7(E), s8(E), s9(E), s11(E) & s12(E)

Bar	A	B
s3(E)	660	1,870
s4(E)	660	1,280
s6(E)	560	880
s7(E)	560	1,020
s8(E)	460	500
s9(E)	460	660
s11(E)	660	450
s12(E)	460	790



**PILE DATA
PIERS 1 & 2 SOUTHBOUND**

Type: Metal Shell Piles 305 mm Dia. x 6.35 mm walls
 Nominal Required Bearing: 1230 kN
 Allowable Resistance Available: 410 kN
 Est. Length: 11 m @ Pier 1
 11 m @ Pier 2
 No. Req'd.: 20 @ Pier 1 **
 20 @ Pier 2 **
 ** Includes 1 Test Pile at Pier 1

**MIN. BAR LAPS
(Unless Otherwise Noted)**

#15 Bars: 640
 #20 Bars: 1,110 m
 #25 Bars: 1,850 m
 #30 Bars: 2,600 m

**(E) BARS
(See Footing Plan)**

Bar Location	No. of Bars	Bar Spacing
a	5	* 237
b	7	* 233
c	5	250
d	3	* 270
e	5	* 265
f	8	250
g	3	* 213

- Notes:**
1. Cast steps monolithically with cap.
 2. All edges shall have standard 20 mm chamfers except as noted.
 3. All dimensions are in millimeters (mm) except as noted.
 4. Reinforcement bars designated (E) shall be Epoxy Coated.
 5. Space reinforcement in cap to miss anchor bolts.

* Bonded Construction Joint
 @ Stage Construction Line

**PIERS 1 & 2 - SOUTHBOUND
 F.A.I. 55 OVER LINDEN STREET
 SECTION (57-4HB-3)BR
 STRUCTURE NO. 057-0235 (N.B.) & 057-0236 (S.B.)
 McLEAN COUNTY
 STATION 38+544.044**

© Copyright Hanson Professional Services Inc. 2003

HANSON

94S2063
 DATE 03/26/04

DATE 11/5/97
 DRAWN 11/5/97
 LAYOUT 11/5/97
 \$TIME\$ 8/16/2009
 \$FILE\$