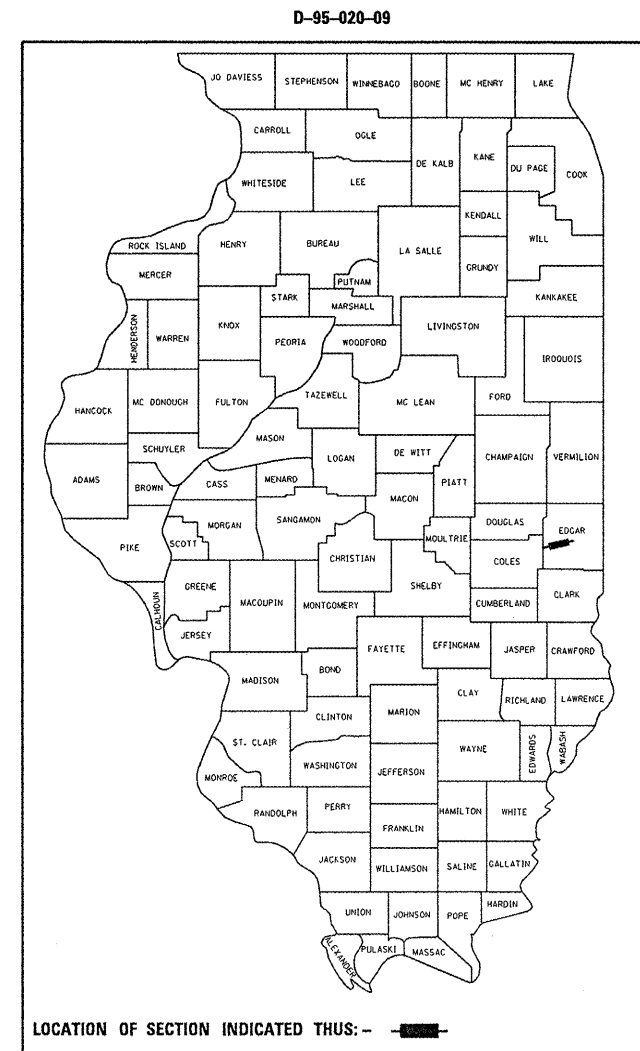


F.A.P. RTE.	SECTION	COUNTY	TOTAL SHEETS	SHEET NO.
91	(1,2)RS-4 & 3RS-3	EDGAR	23	1
ILLINOIS			CONTRACT NO. 70763	

STATE OF ILLINOIS
DEPARTMENT OF TRANSPORTATION
DIVISION OF HIGHWAYS
**PROPOSED
HIGHWAY PLANS**

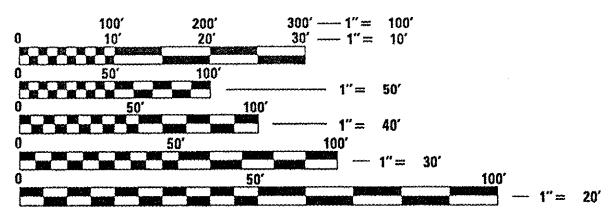
FOR INDEX OF SHEETS, SEE SHEET NO. 2
FOR SUMMARY OF QUANTITIES, SEE SHEET NO. 4 - 5

F.A.P. ROUTE 91 (IL 16)
SECTION (1,2)RS-4 & 3RS-3
RESURFACING (SMART)
COLES CO. LINE TO IL 133
EDGAR COUNTY
PROJECT ESP-0091(071)
C-95-020-09



CURRENT ADT
F. A. P. 91 (IL 16) = 3,150 (2009)

DESIGN DESIGNATION
MINOR ARTERIAL

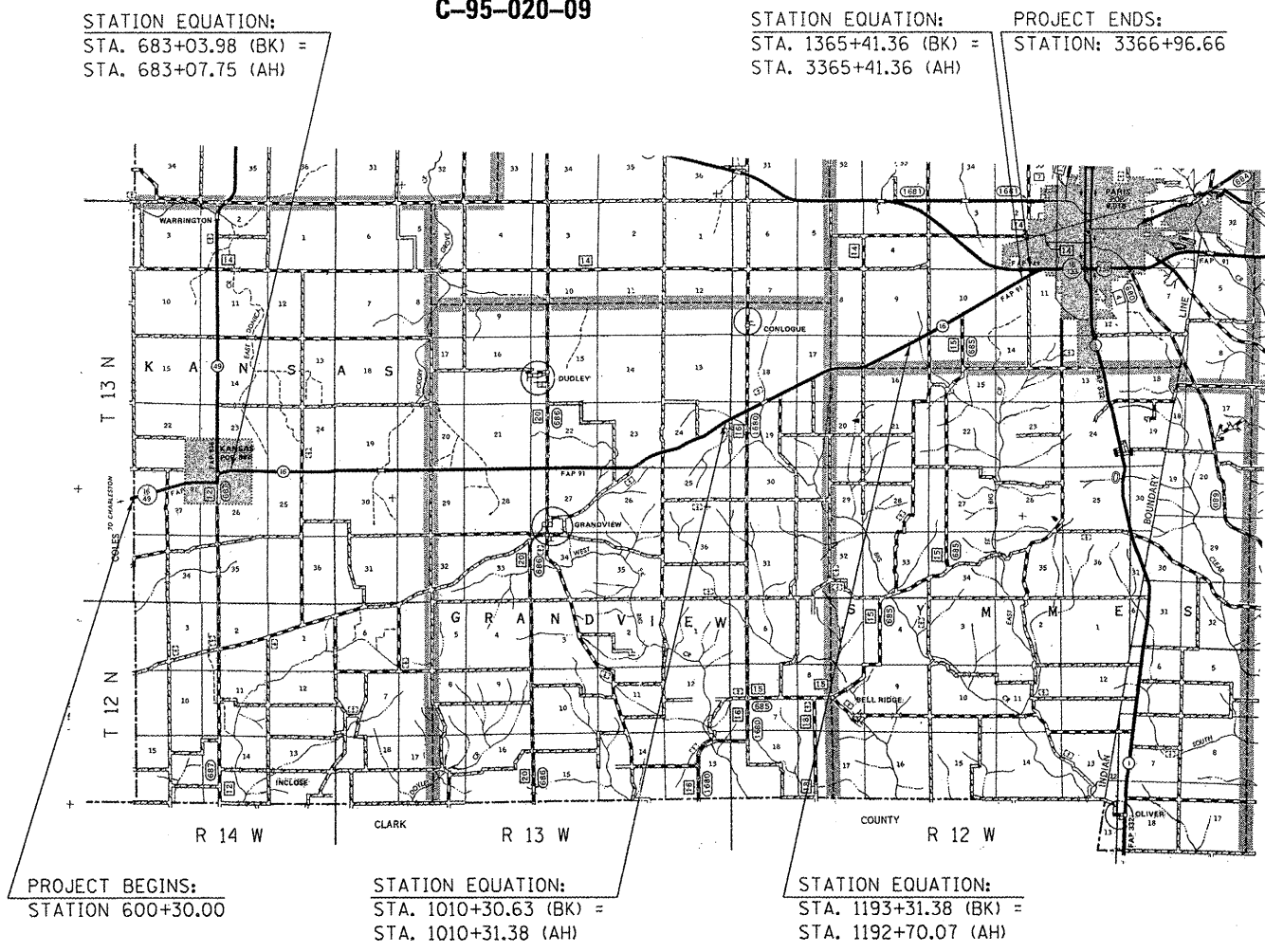


FULL SIZE PLANS HAVE BEEN PREPARED USING STANDARD ENGINEERING SCALES. REDUCED SIZED PLANS WILL NOT CONFORM TO STANDARD SCALES. IN MAKING MEASUREMENTS ON REDUCED PLANS, THE ABOVE SCALES MAY BE USED.

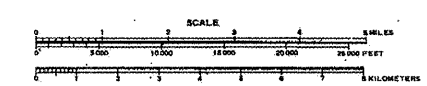
J.U.L.I.E.
JOINT UTILITY LOCATION INFORMATION FOR EXCAVATION
1-800-892-0123
OR 811

PROJECT ENGINEER: KEVIN TRAPP
SQUAD LEADER: MATT BOWER
DESIGNER: GREG ROBINSON

CONTRACT NO. 70763



GROSS LENGTH = 76,723.45 FT. = 14.531 MILES
NET LENGTH = 76,723.45 FT. = 14.531 MILES



STATE OF ILLINOIS
DEPARTMENT OF TRANSPORTATION
DIVISION OF HIGHWAYS

SUBMITTED 8/11 20 09
Paul G. Gowen
DEPUTY DIRECTOR OF HIGHWAYS, REGION ENGINEER

October 2, 20 09
Charles J. Ingersoll
ENGINEER OF DESIGN AND ENVIRONMENT

October 2, 20 09
Christine M. Reed
DIRECTOR OF HIGHWAYS, CHIEF ENGINEER

**PRINTED BY THE AUTHORITY
OF THE STATE OF ILLINOIS**

PLOT DATE = 8/17/2009
FILE NAME = G:\Dw\work\K\PROJECT\BOWERML\012471\70763-sht1-cover.dgn
PLOT SCALE = 40,0000 / IN.
USER NAME = bowerml