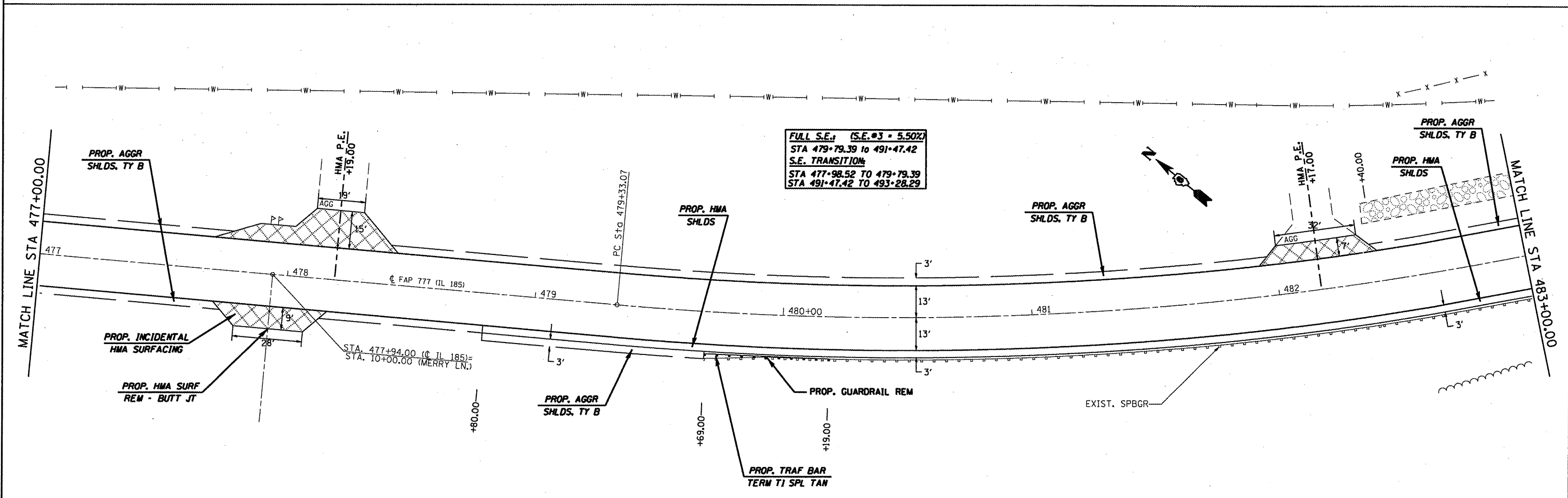


FULL S.E. (S.E.#2 = 3.70%)
 STA 465+01.64 TO 473+07.97
 S.E. TRANSITION:
 STA 463+66.49 TO 465+01.64
 STA 473+07.97 TO 474+43.12



FULL S.E. (S.E.#3 = 5.50%)
 STA 479+79.39 TO 491+47.42
 S.E. TRANSITION:
 STA 477+98.52 TO 479+79.39
 STA 491+47.42 TO 493+28.29

FILE NAME =	USER NAME = coxjw	DESIGNED - JWC	REVISED -	STATE OF ILLINOIS DEPARTMENT OF TRANSPORTATION	PLAN SHEETS			F.A.P. RTE. 777	SECTION 10RS-5	COUNTY Montgomery	TOTAL SHEETS 54	SHEET NO. 26
ct:\pw\work\NPWIDOT\COXJW\dms22861\0672A68-sh1-plan21.dgn	PLOT SCALE = 48.0000" / IN.	DRAWN - JWC	REVISED -		SCALE: 20	SHEET NO. 7 OF 27 SHEETS	STA. 471+00.00 TO STA. 483+00.00	CONTRACT NO. 72A68				
	PLOT DATE = Aug-13-2009 10:31:19AM	CHECKED - RSC	REVISED -		ILLINOIS FED. AID PROJECT							
		DATE - 7/10/09	REVISED -									