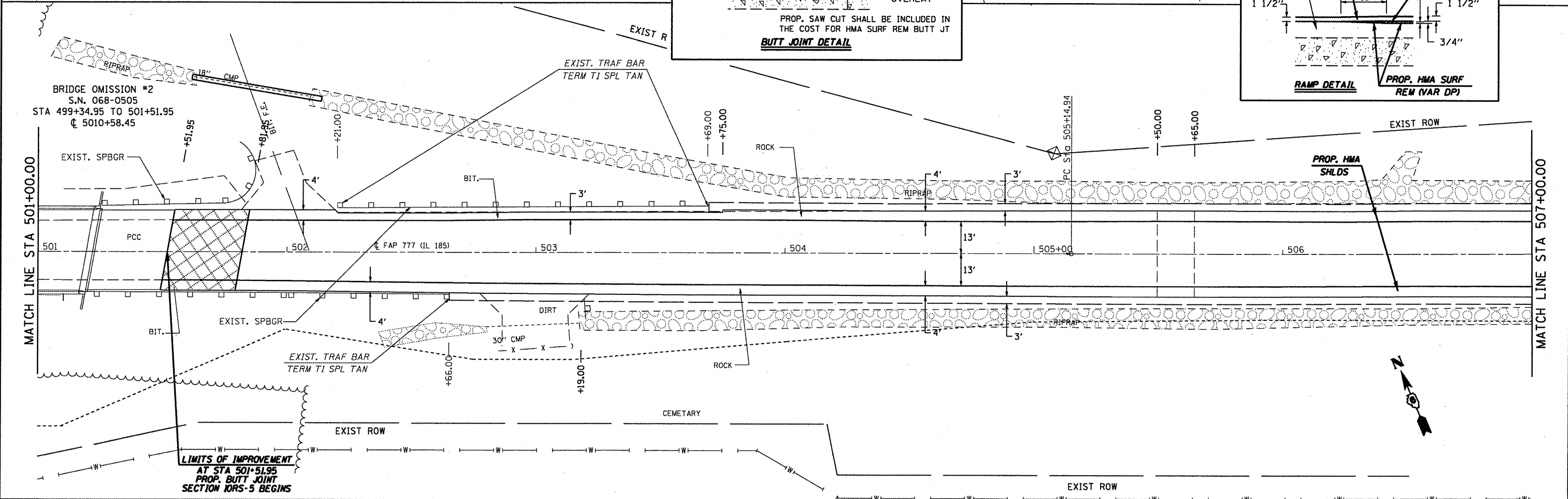
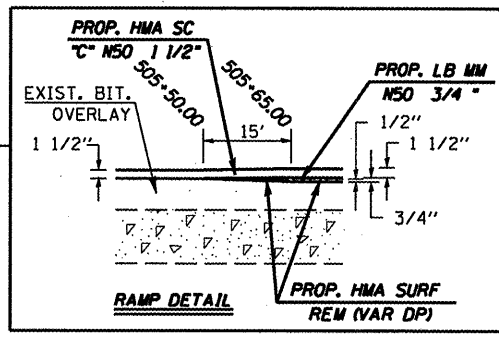
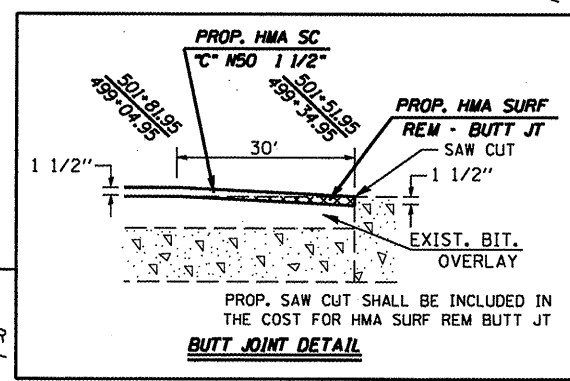


FULL S.E. (S.E.#4 = 5.60%)
 STA 496+37.64 TO 499+38.66
S.E. TRANSITION:
 STA 494+53.21 TO 496+37.64
 STA 499+38.66 TO 501+23.09



FILE NAME =	USER NAME = coxjw	DESIGNED - JWC	REVISED -	STATE OF ILLINOIS DEPARTMENT OF TRANSPORTATION	PLAN SHEETS			F.A.P. RTE. =	SECTION	COUNTY	TOTAL SHEETS	SHEET NO.
cd:\pw\work\PW1001\COXJW\dms22861\VD672A89-shr-plan21.dgn	DRAWN - JWC	REVISED -	REVISED -		777	IORS-5	Montgomery	54	28			
PLOT SCALE = 48.0000' / IN.	CHECKED - RSC	REVISED -	REVISED -		SCALE: 20			SHEET NO. 9 OF 27 SHEETS STA. 495+00.00 TO STA. 507+00.00			CONTRACT NO. T2A68	
PLOT DATE = Aug-13-2009 10:31:21AM	DATE - 7/10/09	REVISED -	REVISED -		ILLINOIS FED. AID PROJECT							