

**PAVEMENT MARKING LEGEND**

**(PAINT)**

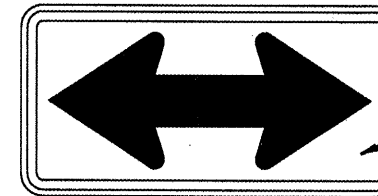
- (A) PAVEMENT MARKING - LINE - 5" DOUBLE YELLOW (SOLID)
- (B) PAVEMENT MARKING - LINE - 5" WHITE (SOLID)

**(THERMOPLASTIC)**

- (C) PAVEMENT MARKING - LINE - 5" WHITE (SOLID)
- (D) PAVEMENT MARKING - LINE - 5" DOUBLE YELLOW (SOLID)
- (E) PAVEMENT MARKING - LINE - 8" WHITE (SOLID)
- (F) PAVEMENT MARKING - LINE - 12" WHITE (SOLID)

**(PREFORMED PLASTIC, TYPE B - INLAID)**

- (G) PAVEMENT MARKING - LINE - 24" WHITE (SOLID)



SIGN PANEL-TYPE 1

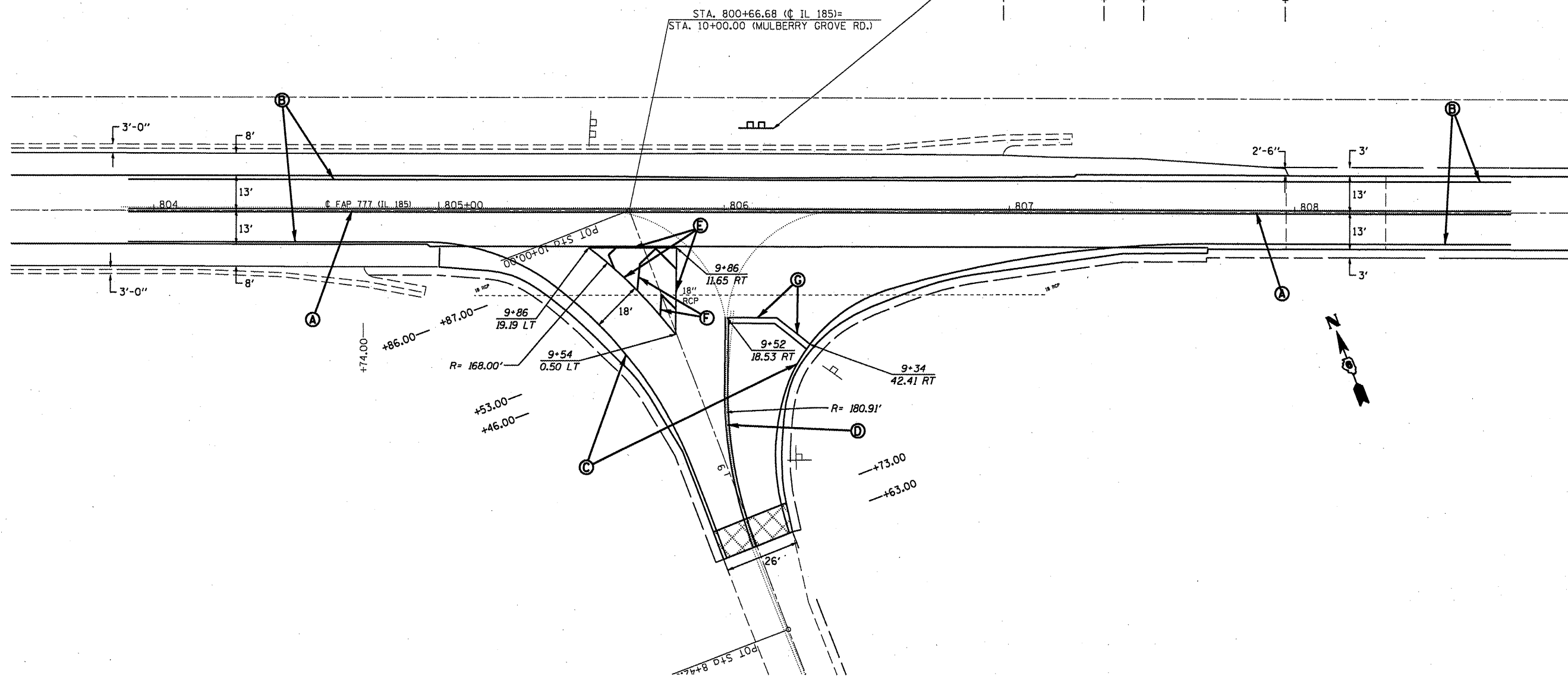
W1-7

(2) TELESCOPING STEEL SIGN SUPPORTS

OMI-3

OMI-3

2 18" x 18" REFLECTOR PANELS SHALL BE PAID FOR AS SIGN PANEL-TYPE 1



FILE NAME =	USER NAME = coxjw	DESIGNED - JWC	REVISED -
o:\pwork\PW100T\COXJW\dms22861\0672468-sh-pavement-mrk.dgn		DRAWN - JWC	REVISED -
PLOT SCALE = 48.0000' / IN.		CHECKED - RSC	REVISED -
PLOT DATE = Aug-13-2009 01:50:23PM		DATE - 7/8/09	REVISED -

**STATE OF ILLINOIS  
DEPARTMENT OF TRANSPORTATION**

**PAVEMENT MARKING DETAIL**

SCALE: 20 SHEET NO. 1 OF 1 SHEETS STA. 803+50.00 TO STA. 809+00.00

F.A.P. RTE. 777	SECTION 10RS-5	COUNTY Montgomery	TOTAL SHEETS 54	SHEET NO. 49
CONTRACT NO. 72A68				
ILLINOIS FED. AID PROJECT				