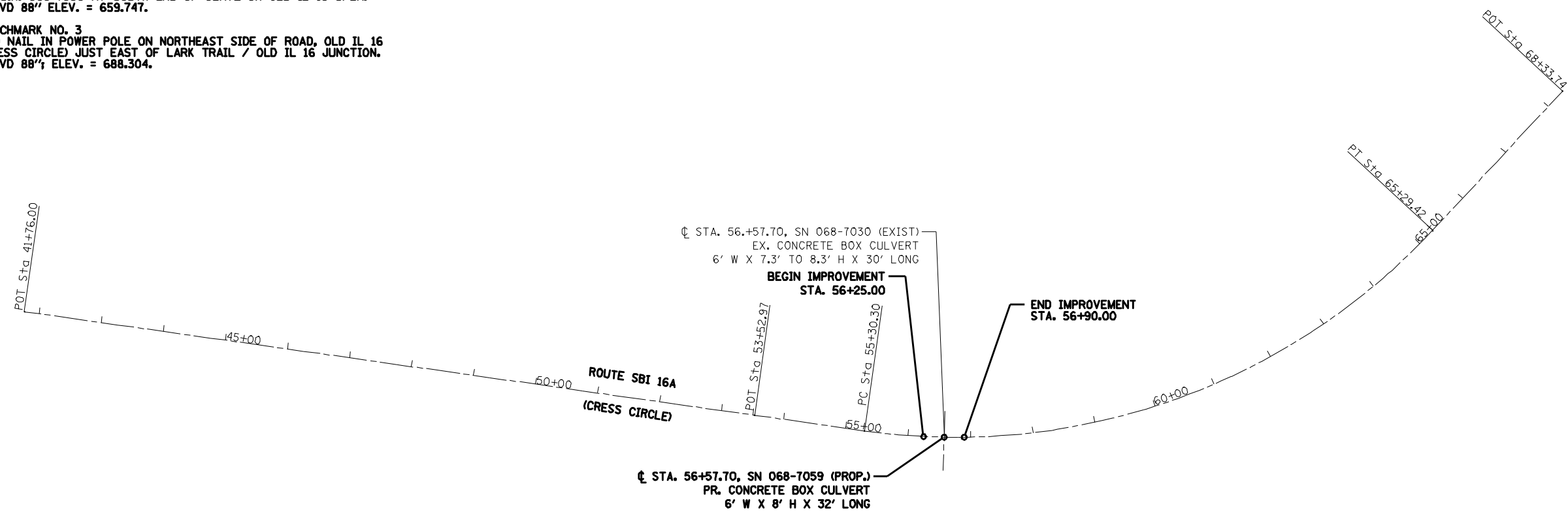
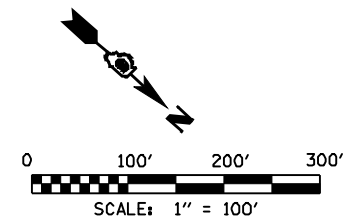


**BENCHMARK NO. 1**  
 CHISELED "□" CUT ON EAST CORNER OF SOUTH CONCRETE FOUNDATION OF CRESS CEMETARY ENTRANCE. "NAVD 88"; ELEV. = 617.737.

**BENCHMARK NO. 2**  
 CHISELED "□" CUT ON CENTER OF EAST HEADWALL OF S.N. 068-7030 AT SOUTH END OF CURVE ON OLD IL 16 SPUR. "NAVD 88" ELEV. = 659.747.

**BENCHMARK NO. 3**  
 60D NAIL IN POWER POLE ON NORTHEAST SIDE OF ROAD, OLD IL 16 (CRESS CIRCLE) JUST EAST OF LARK TRAIL / OLD IL 16 JUNCTION. "NAVD 88"; ELEV. = 688.304.



EXIST. CURVE C100  
 PI STA. = 60+72.20  
 $\Delta = 55^\circ 02' 56''$  (LT)  
 $D = 5^\circ 30' 35''$   
 $R = 1,039.90'$   
 $T = 541.90'$   
 $L = 999.12'$   
 $E = 132.72'$   
 $e = \text{-----}$   
 $T.R. = \text{-----}$   
 S.E. RUN = MATCH EXIST.  
 P.C. STA. = 55+30.30  
 P.T. STA. = 65+29.42

FILE NAME =	USER NAME = laughlinr1	DESIGNED - DMM	REVISED -	<b>STATE OF ILLINOIS DEPARTMENT OF TRANSPORTATION</b>	<b>ALIGNMENT, TIES AND BENCHMARKS ROUTE SBI 16A (CRESS CIRCLE)</b>				F.A. RTE.	SECTION	COUNTY	TOTAL SHEETS	SHEET NO.	
ca:\pwwork\pwwid001\LAUGHLINRL\02156219\0722673-sht-ATB.dgn		DRAWN - DMM	REVISED -		SCALE: 1" = 100'	SHEET NO.	OF	SHEETS	STA.	TO STA.	(21[FR*1])ACB	MONTGOMERY	20	9
PLOT SCALE = 200.0000' / IN.		CHECKED - FL	REVISED -						<b>CONTRACT NO. 72B73</b>					
PLOT DATE = Jul-24-2009 10:39:13AM		DATE - 10/2008	REVISED -						FED. ROAD DIST. NO. ILLINOIS FED. AID PROJECT					