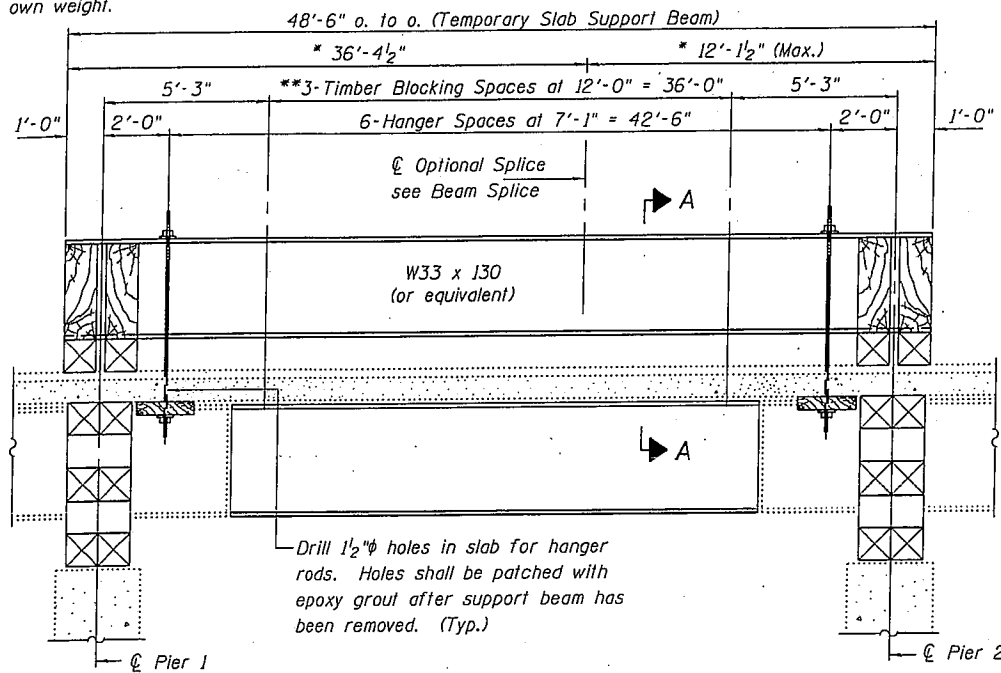
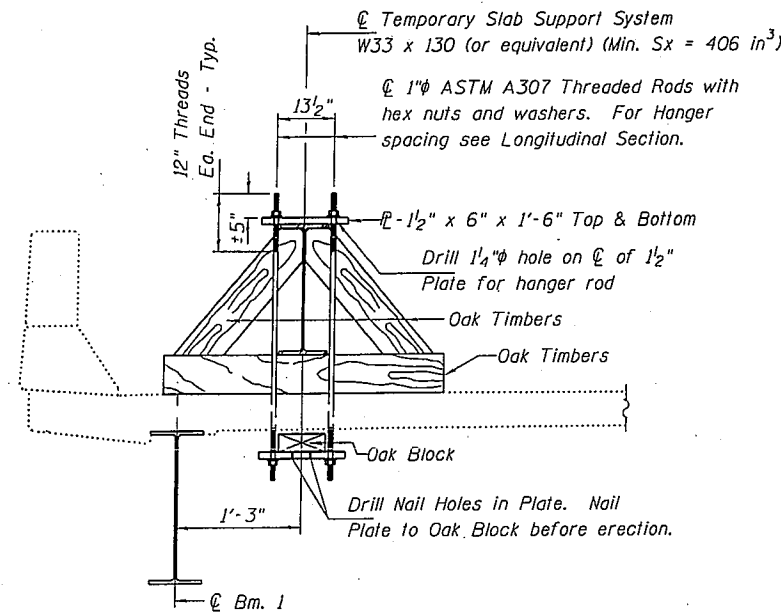


STATE OF ILLINOIS  
DEPARTMENT OF TRANSPORTATION

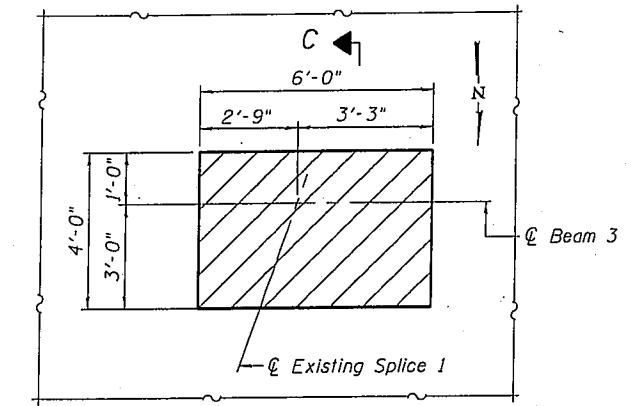
\* These dimensions may vary for available beams in stock.  
\*\* Wood blocking between piers to be placed after support beam is allowed to deflect under its own weight.



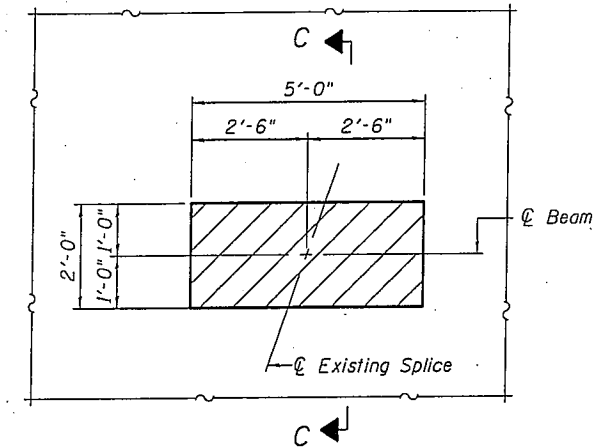
LONGITUDINAL SECTION  
SUGGESTED TEMPORARY SLAB SUPPORT SYSTEM



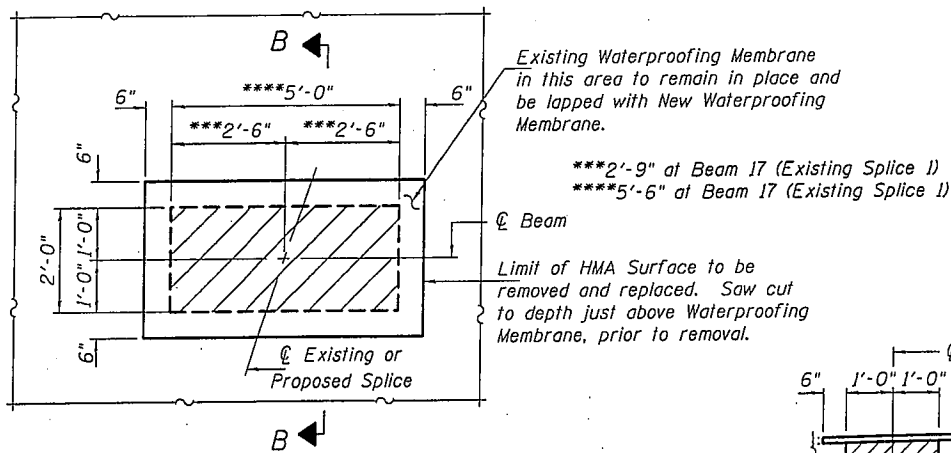
SECTION A-A  
Beam 1 Shown,  
Other Locations Typical Without Curb Detail  
Adjacent beams shall not be removed and replaced simultaneously. If more than one beam is to be replaced at one time it must have its own Temporary Slab Support System.



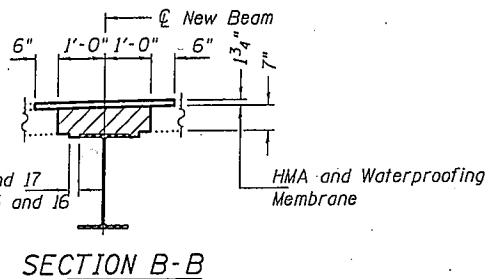
CONCRETE REMOVAL AND REPLACEMENT  
BEAM 3, EXISTING SPLICE 1  
(S.N. 084-0076)



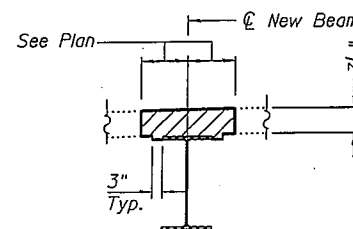
TYPICAL CONCRETE  
REMOVAL AND REPLACEMENT  
(S.N. 084-0076)



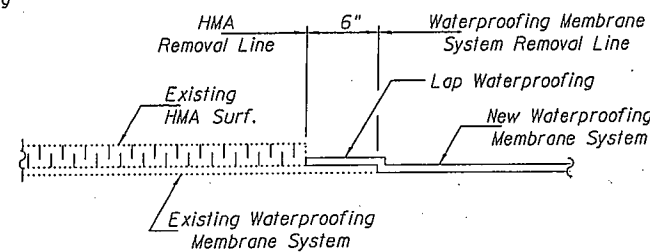
TYPICAL CONCRETE & HMA  
SURFACE REMOVAL AND REPLACEMENT  
(S.N. 084-0077)



SECTION B-B



SECTION C-C



WATERPROOFING TREATMENT

Notes:  
Hatched areas indicate concrete sections to be removed and replaced. Perimeters of concrete removal areas shall be saw cut 3/4" prior to the removal of concrete.  
Reinforcement shall be cut only if required for fitting bolts. Cut reinforcement shall be spliced as directed by the Engineer. Cost shall be included with Concrete Removal.  
The cost of removing and replacing the existing HMA surface, waterproofing membrane, and saw cutting is included with Concrete Removal.

SUPPORT AND SLAB DETAILS  
SN 084-0076 & 0077

DESIGNED	A.J.B.
CHECKED	A.T.H.
DRAWN	Drew Christopher
CHECKED	A.J.B. A.T.H.

EXAMINED	SEPTEMBER 16, 2009
PASSED	

SHEET NO. 3	F.A. RTE. 72	SECTION (84-3HB-4)I-1	COUNTY Sangamon	TOTAL SHEETS 17	SHEET NO. 13
7 SHEETS			CONTRACT NO. 72C69		
FED. ROAD DIST. NO.		ILLINOIS FED. AID PROJECT			