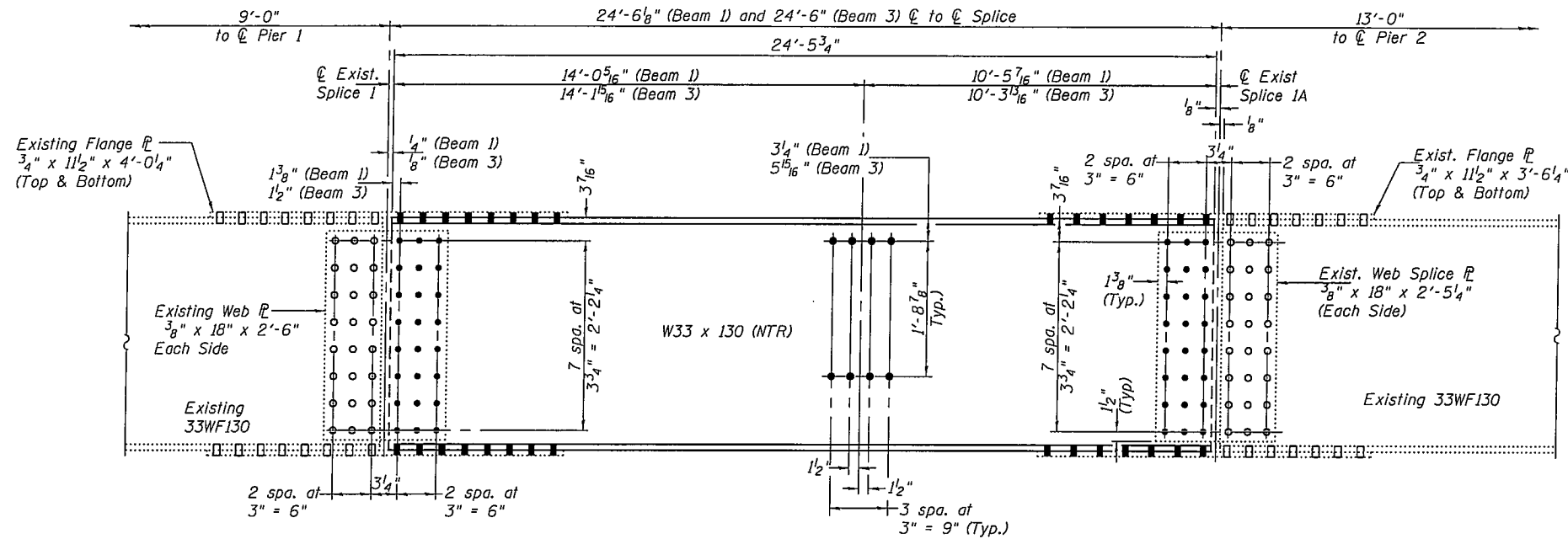
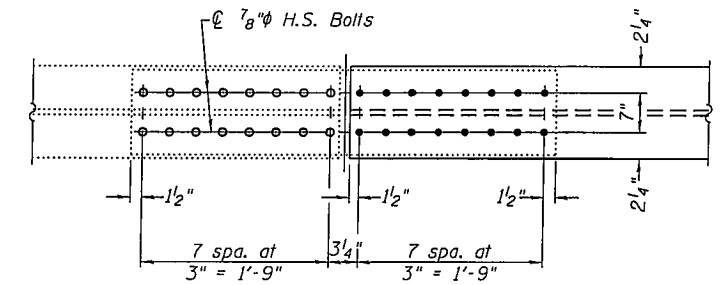


STATE OF ILLINOIS
DEPARTMENT OF TRANSPORTATION

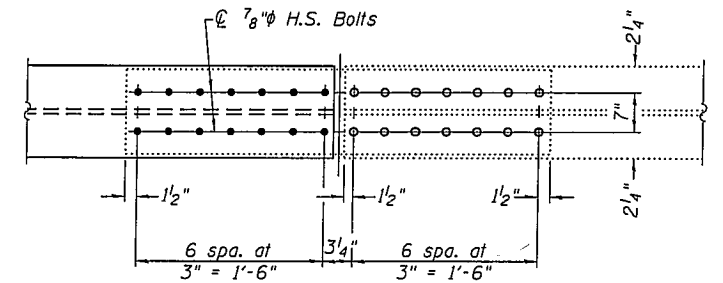


ELEVATION BEAMS 1 AND 3 (SPAN 2)

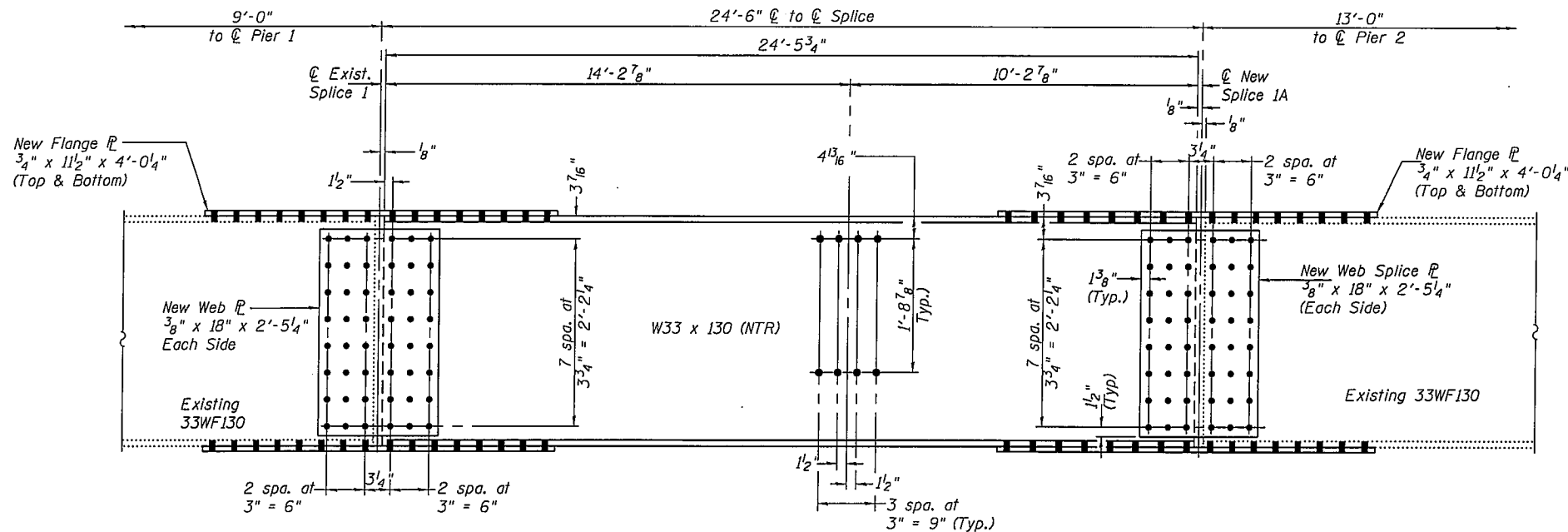
(Looking North)
(SN 084-0076)



EXISTING SPLICE 1 BEAMS 1 AND 3

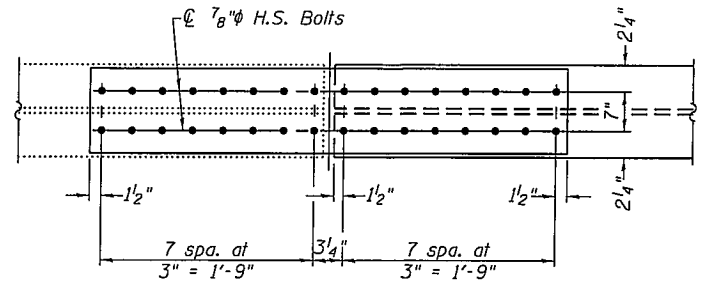


EXISTING SPLICE 1A BEAMS 1 AND 3



ELEVATION BEAM 11 (SPAN 2)

(Looking North)
(SN 084-0077)



TYPICAL FLANGE SPLICE BEAM 11

Notes:

- Use existing splice plates as a template to field drill holes in new beam at existing splice location.
- Use existing clip angles as a template to field drill holes in new beam at existing diaphragm location.

DESIGNED	A.J.B.
CHECKED	A.T.H.
DRAWN	Drew Christopher
CHECKED	A.J.B. A.T.H.

SEPTMBER 16, 2009
EXAMINED <i>Carl Proyer</i> ENGINEER OF STRUCTURAL SERVICES
PASSED <i>Ralph E. Anderson</i> ENGINEER OF BRIDGES AND STRUCTURES

BEAM REPLACEMENT DETAILS
SN 084-0076 & 0077

SHEET NO. 4 7 SHEETS	F.A. RTE.	SECTION	COUNTY	TOTAL SHEETS	SHEET NO.
	72	(84-3HB-4)I-1	Sangamon	17	14
FED. ROAD DIST. NO.			ILLINOIS	FED. AID PROJECT	
			CONTRACT NO.		72C69