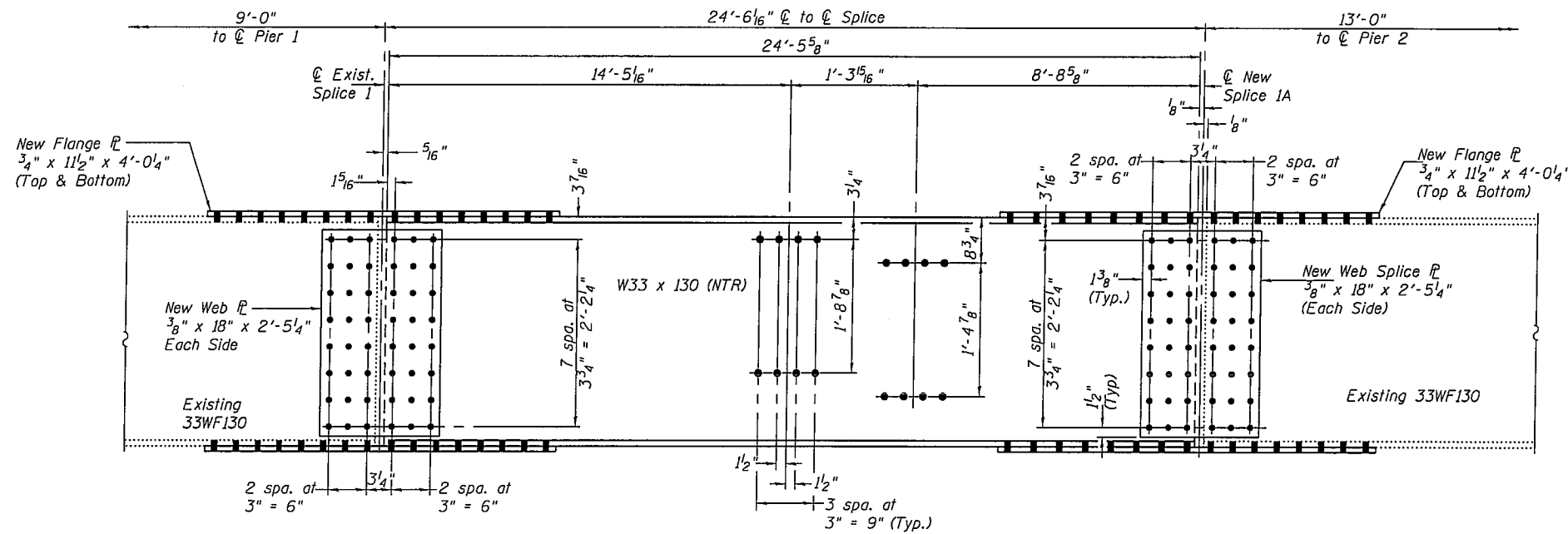
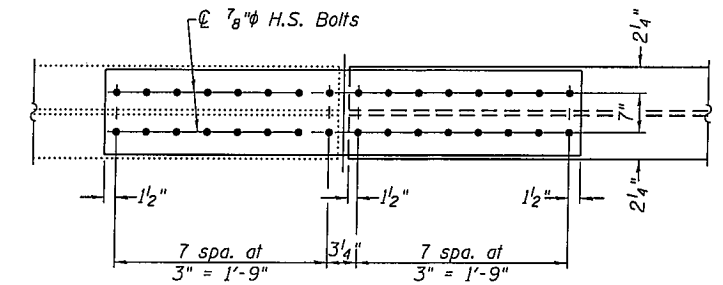


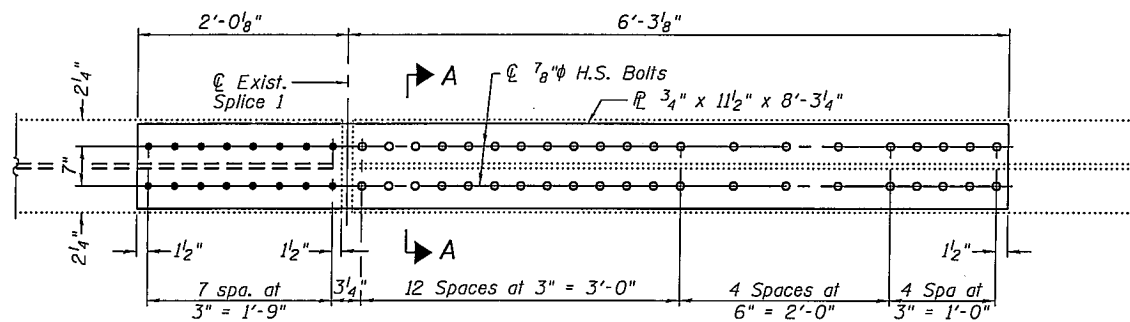
STATE OF ILLINOIS
DEPARTMENT OF TRANSPORTATION



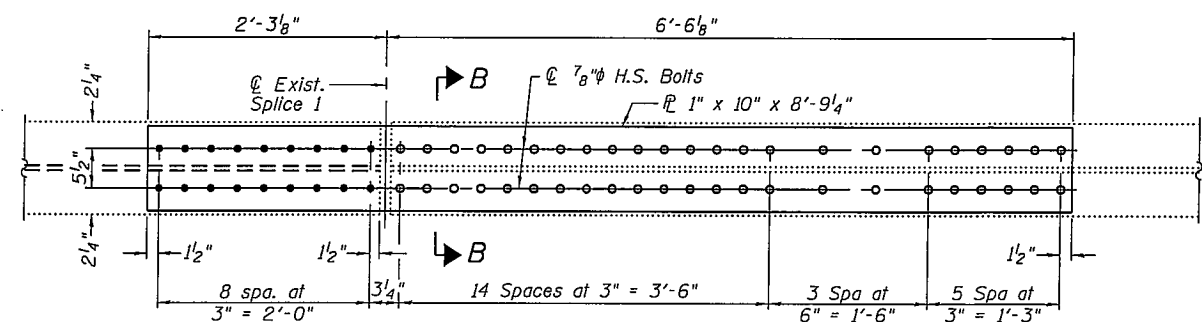
ELEVATION BEAM 16 (SPAN 2)
(Looking North)
(SN 084-0077)



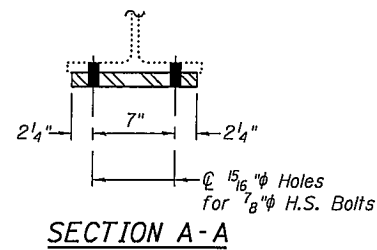
TYPICAL FLANGE SPLICE DETAIL
(Beam 16)



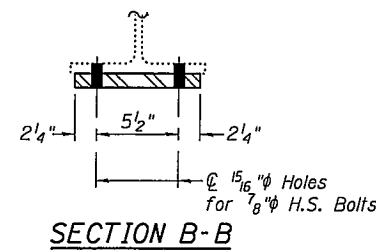
BEAM 14 STRENGTHENING P
(SN 084-0077)



BEAM 19 STRENGTHENING P
(SN 084-0077)



SECTION A-A



SECTION B-B

Notes:
Use existing clip angles as a template to field drill holes in new beam at existing diaphragm location.

DESIGNED	A.J.B.
CHECKED	A.T.H.
DRAWN	Drew Christopher
CHECKED	A.J.B. A.T.H.

EXAMINED	<i>Carl Perry</i> ENGINEER OF STRUCTURAL SERVICES
PASSED	<i>Ralph E. Anderson</i> ENGINEER OF BRIDGES AND STRUCTURES

SEPTEMBER 16, 2009

DETAILS
SN 084-0076 & 0077

SHEET NO. 6 7 SHEETS	F.A. RTE.	SECTION	COUNTY	TOTAL SHEETS	SHEET NO.
	72	(84-3HB-4)I-1	Sangamon	17	16
FED. ROAD DIST. NO.			ILLINOIS	FED. AID PROJECT	
			CONTRACT NO. 72C69		