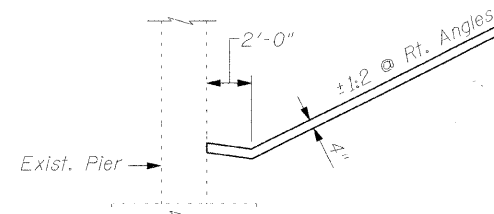


Bench Mark: Chiseled square at S.W. corner of existing structure. Elevation 474.31

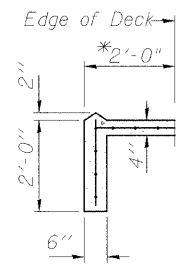
Existing Structure: S.N. 051-0031 built in 1959 as F.A.I. Rte. 64, Section 51-23HB-6 at Station 702+77.55. Structure consists of 3 span reinforced concrete deck on steel WF beams supported on spill-thru abutments and hammerhead piers. The abutments are on steel piles and the piers are on spread footings. The structure has an overall length of 201'-8" back-to-back of abutments and a width of 25'-8" out-to-out of deck. The concrete deck is to be removed and replaced. Traffic to be detoured during construction.

No salvage.

STATE OF ILLINOIS
DEPARTMENT OF TRANSPORTATION



SECTION THRU SLOPEWALL



SECTION A-A

*5'-0" at SW & SE Corners

LOADING HS20-44

Allow 25#/sq. ft. for future wearing surface.

DESIGN SPECIFICATIONS

2002 AASHTO
1995 Seismic Retrofitting Manual
for Highway Bridges

DESIGN STRESSES

FIELD UNITS

New Construction

$f'_c = 3,500$ psi
 $f_y = 60,000$ psi (reinforcement)

Existing Construction

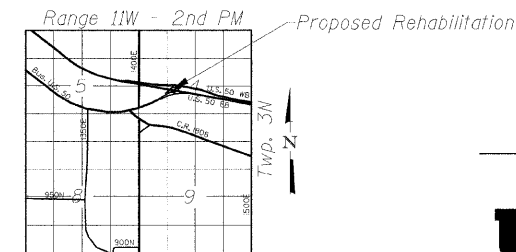
$f'_c = 3,500$ psi
 $f_y = 40,000$ psi (reinforcement)
 $f_y = 33,000$ psi (structural steel)

SEISMIC DATA

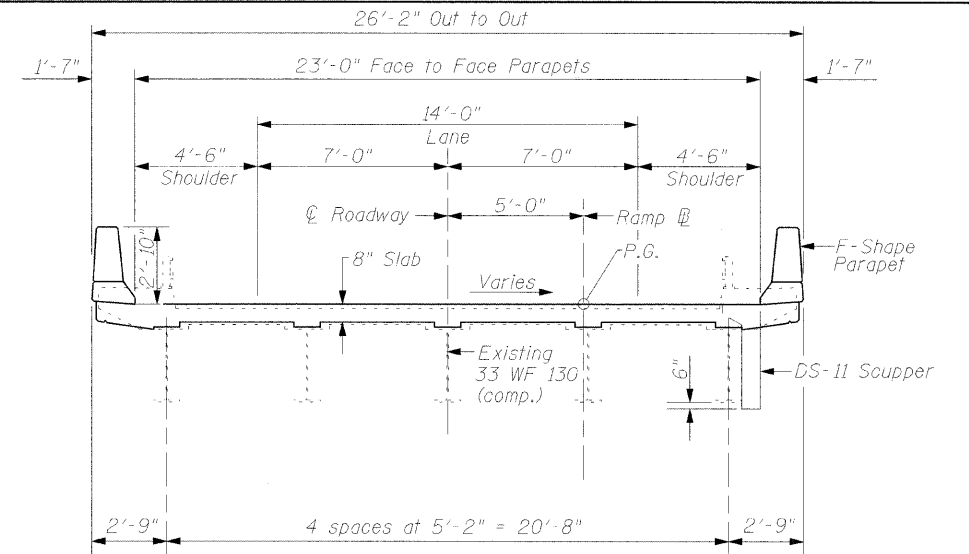
Seismic Performance Category (SPC) = A
Horizontal Bedrock Acceleration Coefficient (A) = 0.087g
Site Coefficient (S) = 1.0

CURVE DATA

$\Delta = 36^\circ-29'-50"$ (Rt.)
 $D = 8^\circ 16' 47"$
 $T = 228.17'$
 $L = 440.80'$
 $E = 36.65'$
 $R = 692.00'$
 $S.E. = 0.080'/ft.$
P.C. Sta. = 95A+66.04
P.T. Sta. = 100A+06.84
P.I. Sta. = 97A+94.21
S.E. Trans. = 435'
S.E. Attained Sta. 92A+65 to Sta. 97A+00
N.C. = $\frac{3}{16}"/ft.$

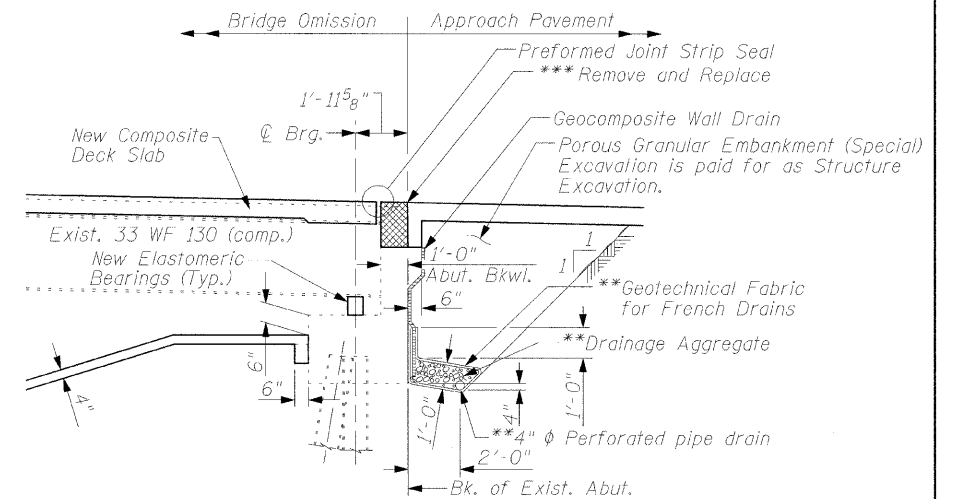


LOCATION SKETCH



CROSS SECTION

(Looking East)



SECTION THRU ABUTMENT

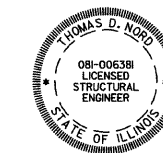
(Dimensions @ Rt. L's)

**Included in the cost of Pipe Underdrains for Structures.
***Included in the cost of Concrete Superstructure.

All drainage system components shall extend to 2'-0" from the end of each wingwall except an outlet pipe shall extend down slope to headwall @ toe of slope. (See Article 601.05 of the Standard Specifications and Highway Standard 601101)

APPROVED
FOR STRUCTURAL ADEQUACY ONLY

Ralph E. Anderson
ENGINEER OF BRIDGES AND STRUCTURES

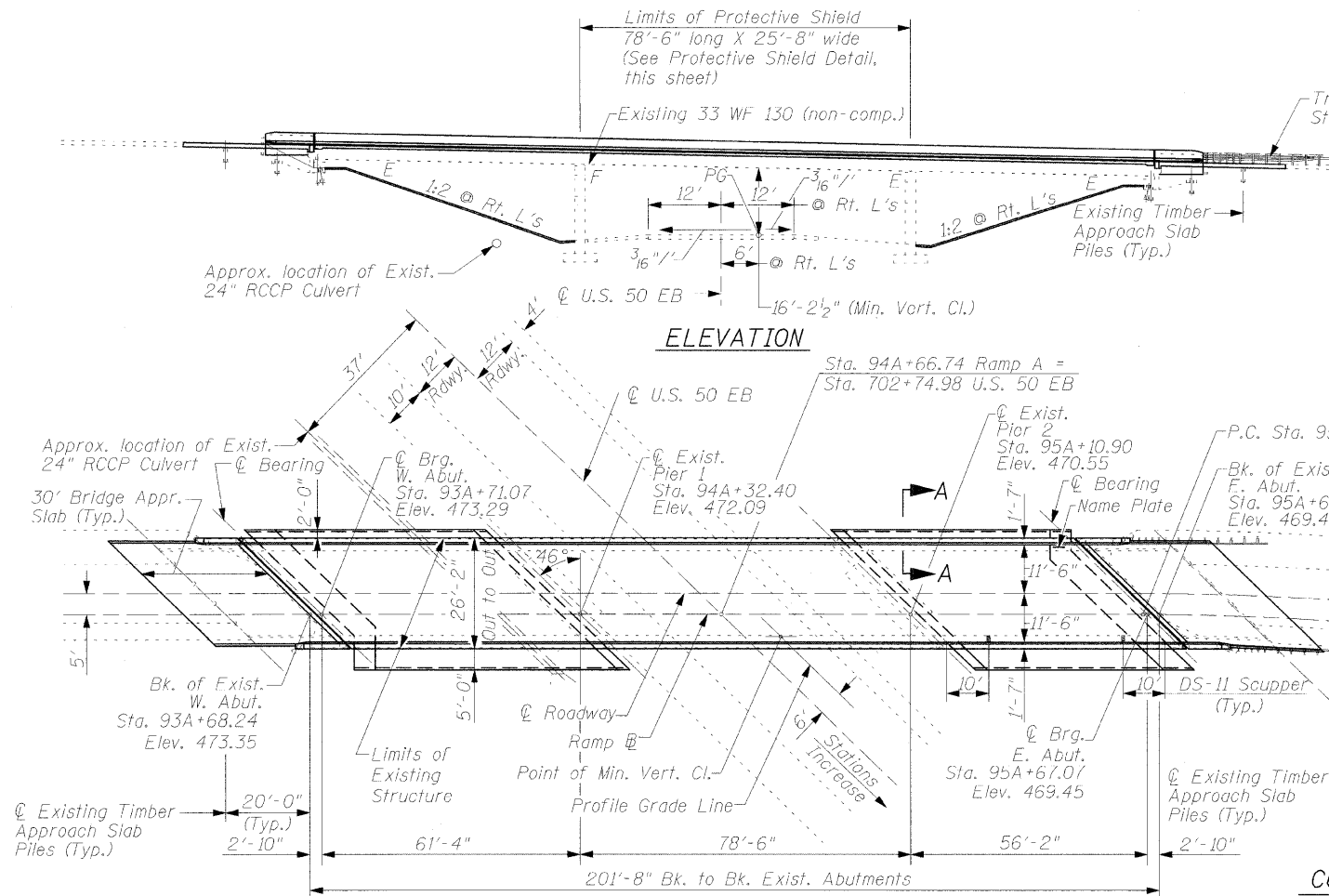


Thomas D. Nord 3-18-09
EXPIRATION DATE: 11-30-2010

GENERAL PLAN
FAS 1807 U.S. BUSINESS 50 RAMP OVER
U.S. 50 EASTBOUND
FAP ROUTE 327
SECTION (51-23HB)-6B-1
LAWRENCE COUNTY
STATION 94A+66.74
STRUCTURE NO. 051-0031

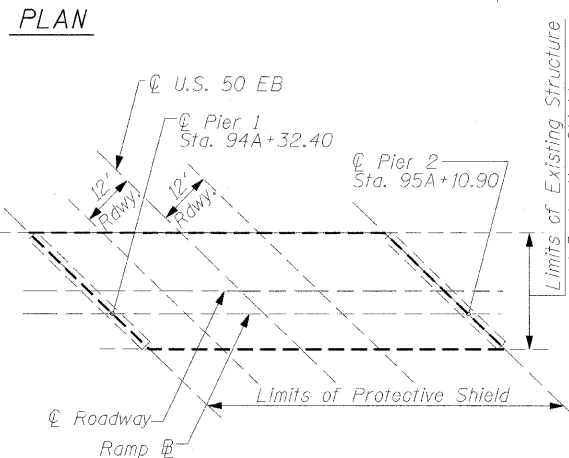
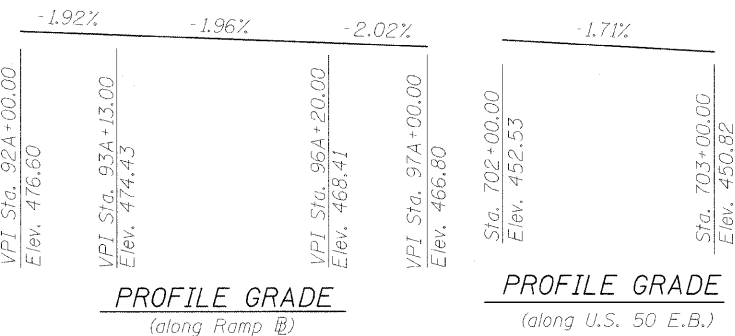
URS
345 E. ASH AVE., SUITE B
DECATUR, I.L. 62526
TEL. 217-875-4800

SHEET NO. 1	F.A.S. RTE. 1807	SECTION (51-23HB)-6B-1	COUNTY LAWRENCE	TOTAL SHEETS 60	SHEET NO. 17
24 SHEETS	CONTRACT NO. 74115		FED. ROAD DIST. NO. ILLINOIS FED. AID PROJECT		



ELEVATION

PLAN



PROTECTIVE SHIELD DETAIL

DESIGNED - MJP
CHECKED - KWB
DRAWN - REZ
CHECKED - TDN

STATION 94A+66.74
RE-BUILT 2009 BY
STATE OF ILLINOIS
F.A.S. 1807 - SEC. (51-23HB)-6B-1
LOADING HS20-44
STRUCTURE NO. 051-0031

NAME PLATE

See Std. 515001
Existing name plate shall be cleaned and placed next to the new name plate. Cost included in "Name Plates".