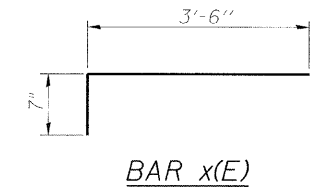
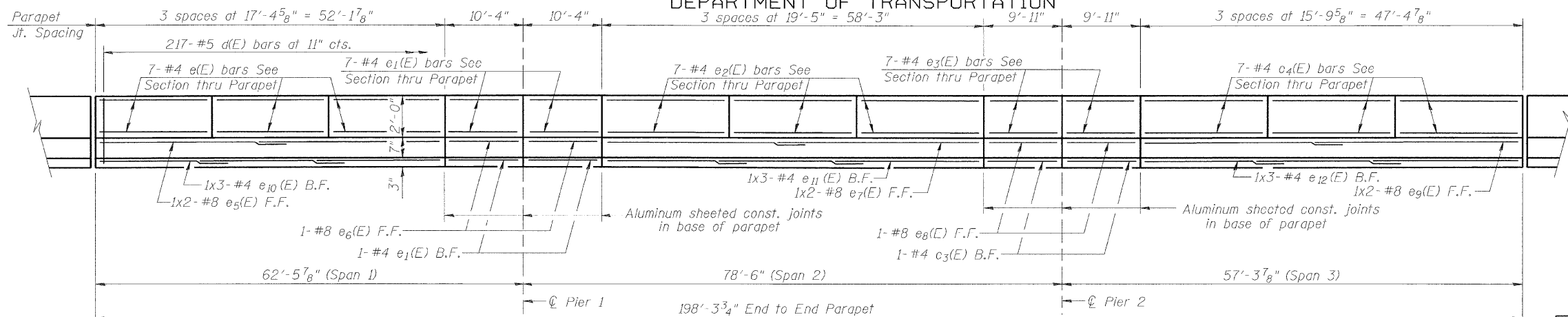


STATE OF ILLINOIS
DEPARTMENT OF TRANSPORTATION



SUPERSTRUCTURE
BILL OF MATERIAL

Bar	No.	Size	Length	Shape
a(E)	251	#5	25'-6"	—
a1(E)	238	#5	24'-0"	—
a2(E)	252	#6	6'-0"	—
a3(E)	4	#5	37'-0"	—
a4(E)	16	#5	1'-6"	—
b(F)	203	#5	29'-9"	—
b1(E)	78	#6	15'-0"	—
b2(E)	78	#6	14'-4"	—
b3(E)	176	#5	26'-3"	—
d(E)	434	#5	5'-7"	—
d1(E)	434	#5	7'-6"	—
e(E)	42	#4	1'-1"	—
e1(E)	32	#4	10'-1"	—
e2(E)	42	#4	19'-2"	—
e3(E)	32	#4	9'-8"	—
e4(E)	42	#4	15'-6"	—
e5(E)	4	#8	27'-8"	—
e6(E)	4	#8	10'-1"	—
e7(E)	4	#8	30'-9"	—
e8(E)	4	#8	9'-8"	—
e9(E)	4	#8	25'-4"	—
e10(E)	6	#4	18'-3"	—
e11(E)	6	#4	20'-3"	—
e12(E)	6	#4	16'-8"	—
x(E)	46	#5	4'-1"	—
Reinforcement Bars, Epoxy Coated	Pound	38,960		
Concrete Superstructure	Cu. Yds.	186.1		
Bridge Deck Grooving	Sq. Yd.	463		
Protective Coat	Sq. Yd.	673		

Bars indicated thus 1x2-#8 etc. indicates 1 line of bars with 2 lengths per line.

SUPERSTRUCTURE DETAILS

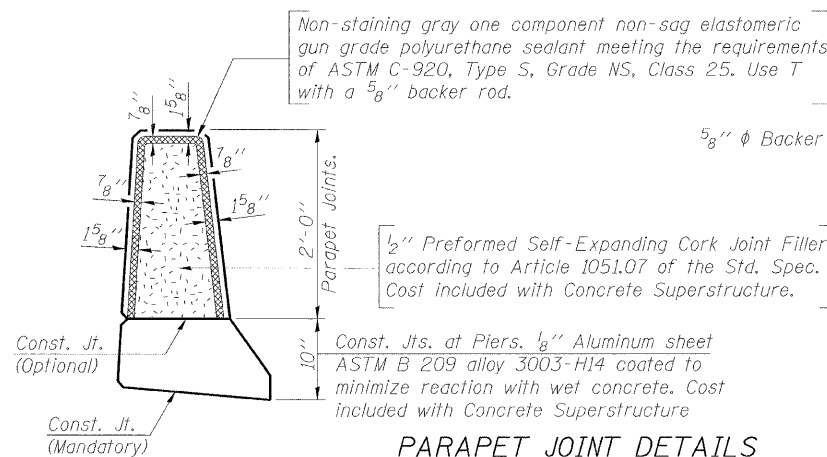
FAS ROUTE 1807 SECTION (51-23HB)-6B-1
LAWRENCE COUNTY
STATION 94A+66.74
STRUCTURE NO. 051-0031

INSIDE ELEVATION OF PARAPET

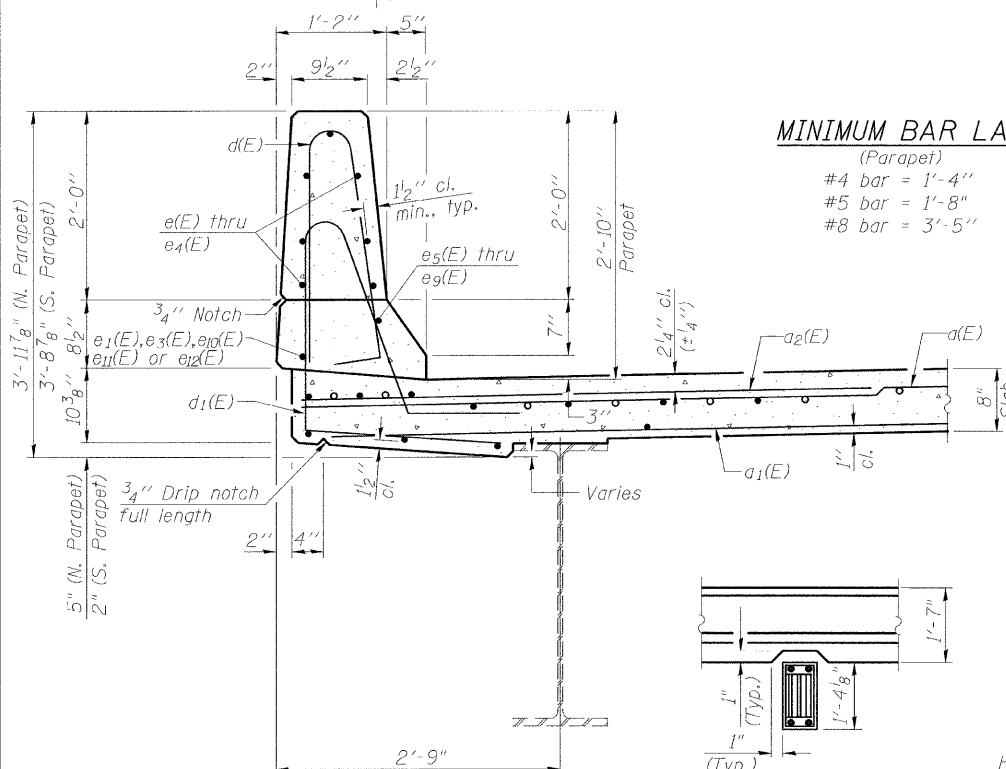
(North Parapet shown, the South Parapet is similar)

MINIMUM BAR LAP

(Parapet)
#4 bar = 1'-4"
#5 bar = 1'-8"
#8 bar = 3'-5"



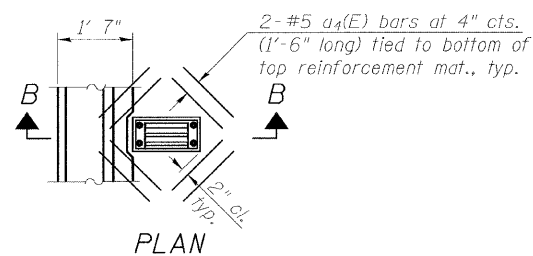
PARAPET JOINT DETAILS



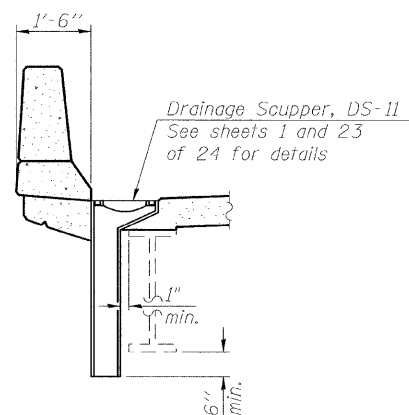
SECTION THRU PARAPET

PARAPET PLAN VIEW
(Showing cut-out for Scupper)

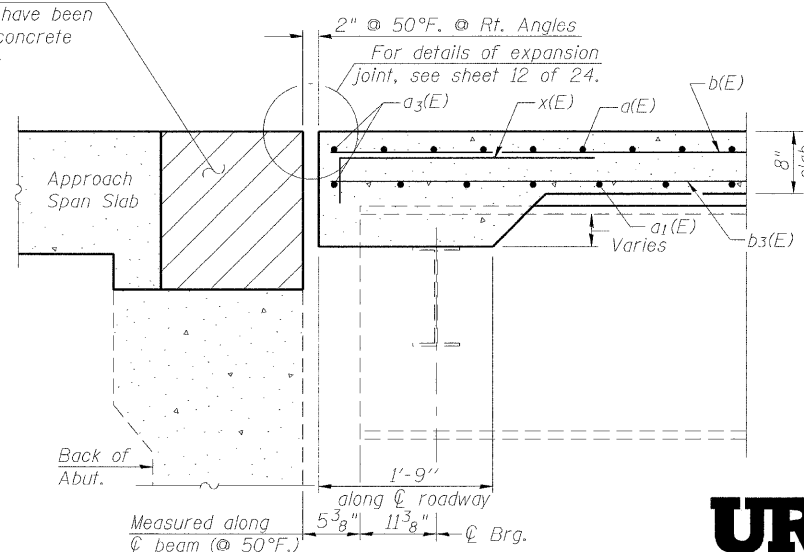
Hatched area to be poured after superstructure forms have been removed. Quantity of concrete included with Concrete Superstructure.



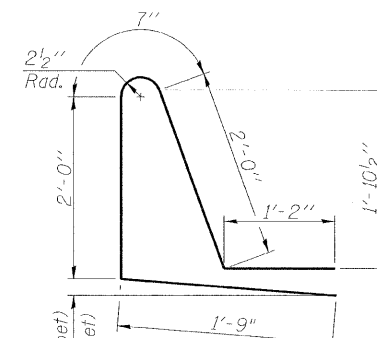
Note: Cut longitudinal reinforcement to clear drainage scuppers.



SECTION B-B



SECTION A-A



BAR d1(E)

DESIGNED -	MJP
CHECKED -	KWB
DRAWN -	REZ
CHECKED -	TDN



345 E. ASH AVE., SUITE B
DECATUR, IL. 62526
TEL. 217-875-4800

SHEET NO. 9 24 SHEETS	F.A.S. RTE.	SECTION	COUNTY	TOTAL SHEETS	SHEET NO.
	1807	(51-23HB)-6B-1	LAWRENCE	60	25
			CONTRACT NO. 74115		
FED. ROAD DIST. NO. _ ILLINOIS FED. AID PROJECT					