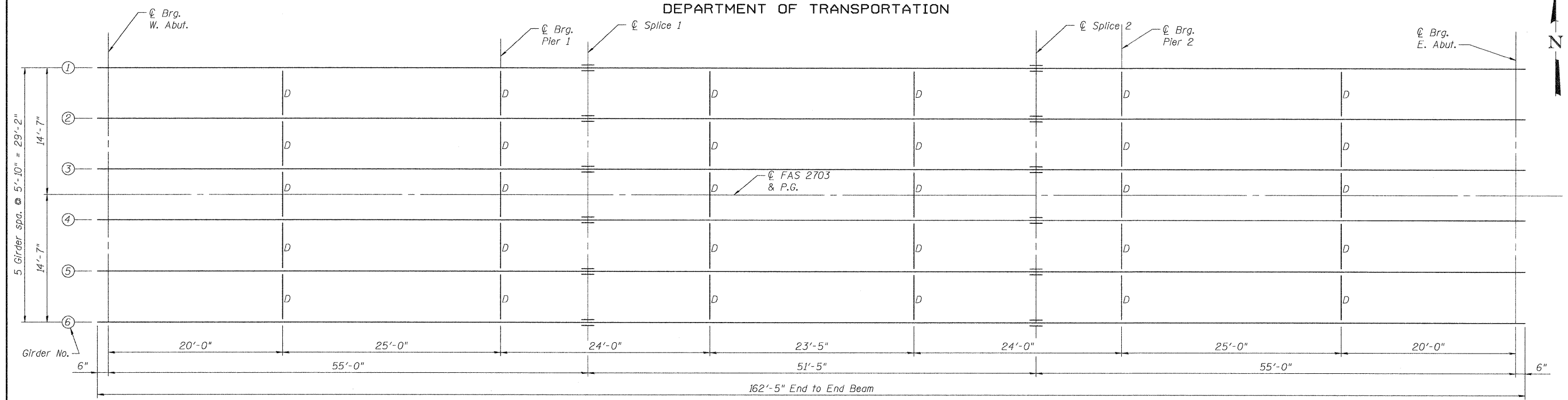
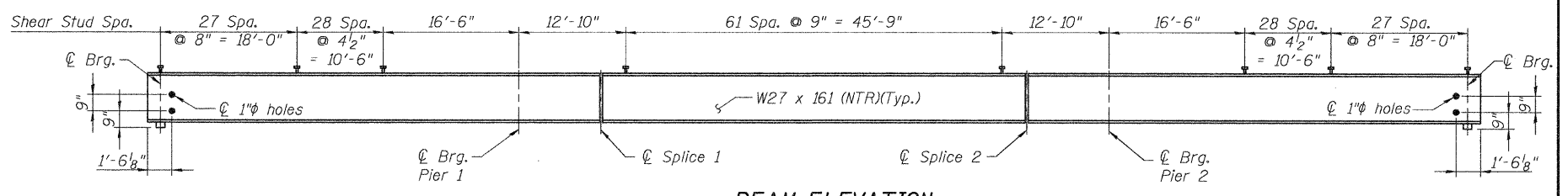


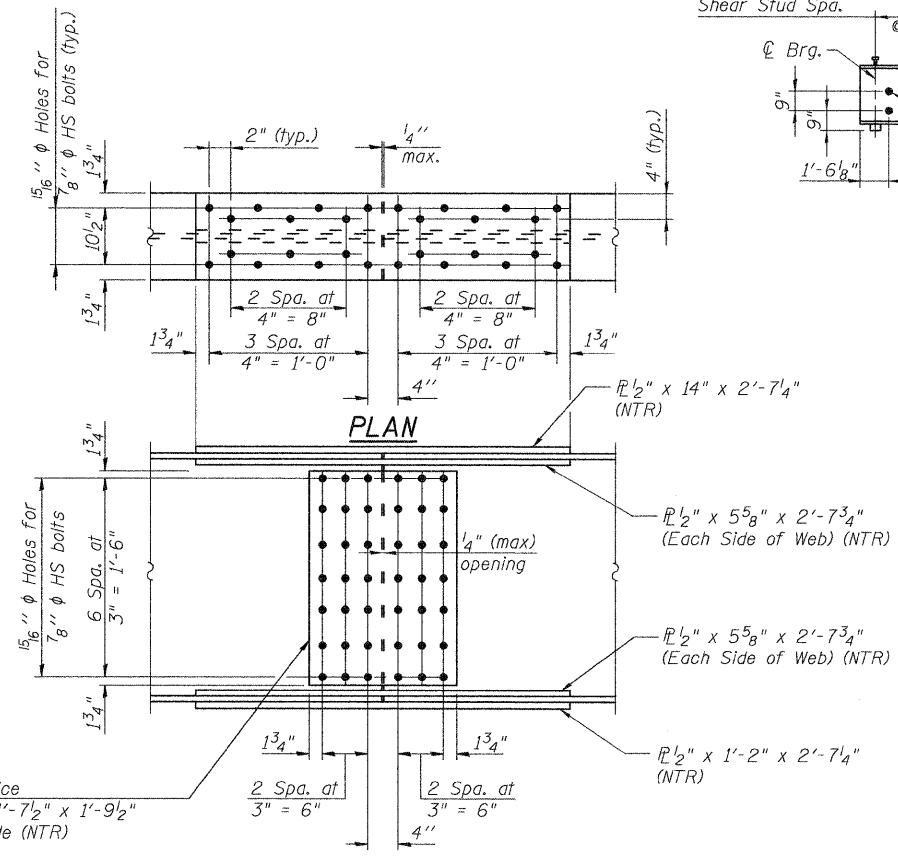
STATE OF ILLINOIS  
DEPARTMENT OF TRANSPORTATION



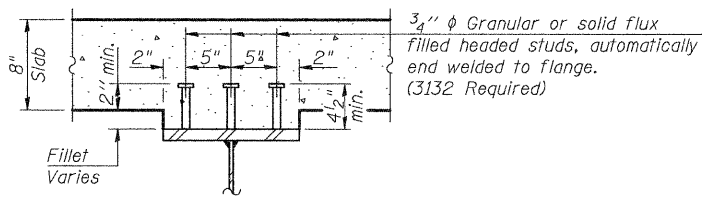
FRAMING PLAN



BEAM ELEVATION



SPLICE DETAIL  
(12 Required)



SECTION A-A

\* TOP OF BEAM ELEVATIONS

Location	℄ Brg. W. Abut	℄ Pier 1	℄ Splice 1	℄ Splice 2	℄ Pier 2	℄ Brg. E. Abut
Girder 1	571.47	571.18	571.11	570.74	570.61	570.01
Girder 2	571.57	571.35	571.30	570.84	570.71	570.11
Girder 3	571.67	571.45	571.40	570.94	570.81	570.21
Girder 4	571.67	571.45	571.40	570.94	570.81	570.21
Girder 5	571.57	571.35	571.30	570.84	570.71	570.11
Girder 6	571.47	571.18	571.11	570.74	570.61	570.01

\* For fabrication only

Notes:  
Load carrying components designated "NTR" shall conform to the Supplemental Requirements for Notch Toughness, Zone 2.  
All diaphragms shall be installed as steel is erected and secured with erection pins and bolts except as otherwise noted. Individual cross frames or diaphragms at supports may be temporarily disconnected to install bearing anchor rods.  
See Sheet 11 of 22 for Diaphragm Details.  
See Sheet 11 of 22 for Anchor Bolt placement.

STRUCTURAL STEEL  
KINMUNDY/LOUISVILLE ROAD  
OVER ILLINOIS CENTRAL RR  
STA. 475+50.44

DESIGNED	B.B.
CHECKED	C.J.F.
DRAWN	J.G.
CHECKED	C.J.F. & B.B.

**BERNARDIN  
LOCHMUELLER &  
ASSOCIATES, INC.**

3 Oak Drive  
Maryville, IL 62062-5635  
Local-(618) 288-4665  
Fax 618-288-4666

SHEET NO. 10 22 SHEETS	F.A.S. RTE. 2703	SECTION (9-VBR)B	COUNTY CLAY	TOTAL SHEETS 65	SHEET NO. 32
	SN 013-0044		CONTRACT NO. 74136		
FED. ROAD DIST. NO. 7 ILLINOIS FED. AID PROJECT					

2/2/05 PM 10/13/2008 \_LPI\lps03\300447436.dgn