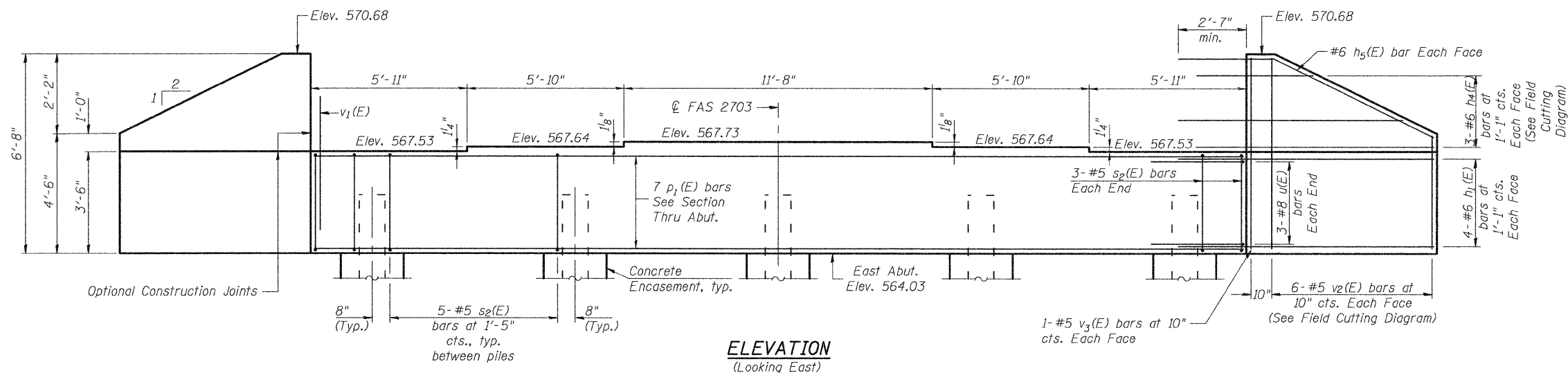
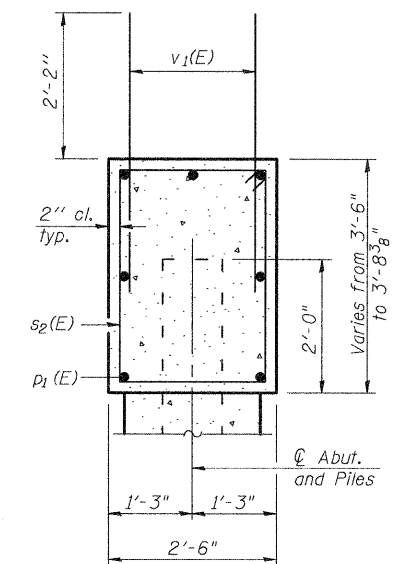


STATE OF ILLINOIS
DEPARTMENT OF TRANSPORTATION



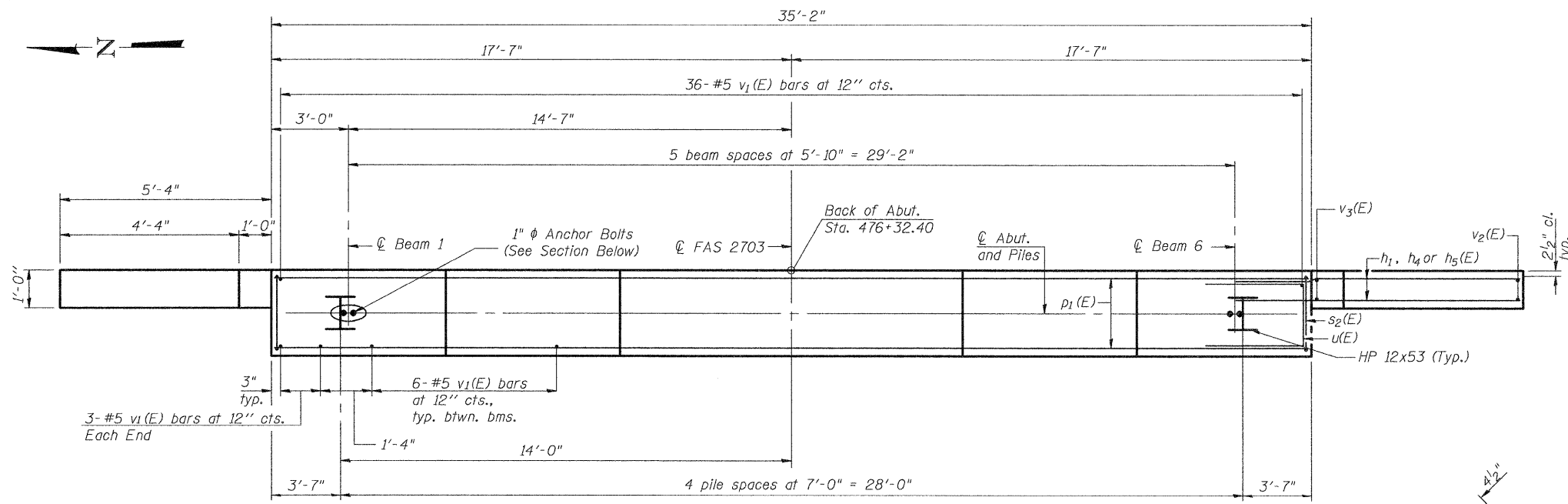
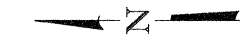
ELEVATION
(Looking East)



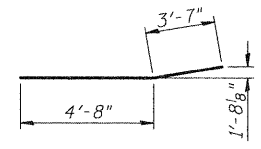
SEC. THRU ABUT.

BILL OF MATERIAL

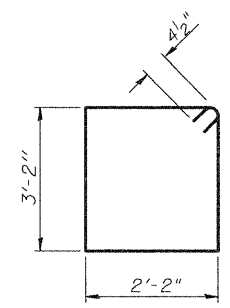
Bar	No.	Size	Length	Shape
h1(E)	16	#6	8'-5"	—
h4(E)	6	#6	12'-7"	—
h5(E)	4	#6	8'-3"	—
p1(E)	7	#8	34'-10"	—
s2(E)	26	#5	11'-5"	□
u(E)	6	#8	8'-10"	□
v1(E)	72	#6	4'-4"	—
v2(E)	12	#5	10'-6"	—
v3(E)	4	#5	6'-4"	—
Structure Excavation			Cu. Yd.	101.5
Concrete Structures			Cu. Yd.	14.0
Reinforcement Bars, Epoxy Coated			Pound	2100
Furnishing - Steel Piles, HP 12x53			Foot	240
Driving Piles			Foot	240
Test Pile, HP 12x53			Each	1
Concrete Encasement			Cu. Yd.	1.7
Pile Shoes			Each	5



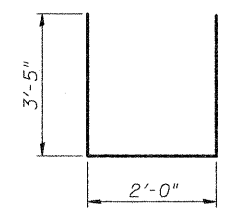
PLAN



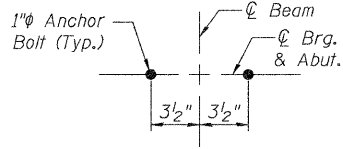
BAR h5(E)



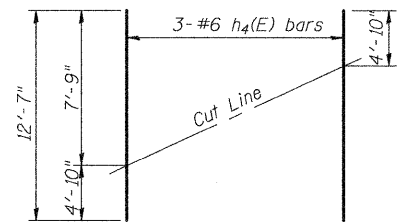
BAR s2(E)



BAR u(E)

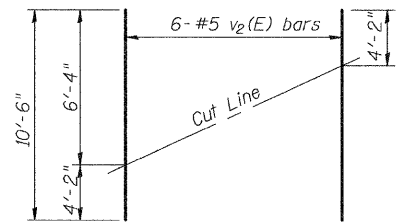


ANCHOR BOLT DETAIL



h4 FIELD CUTTING DIAGRAM

Order h4(E) full length. Cut as shown and use remainder of bars in opposite face.



v2 FIELD CUTTING DIAGRAM

Order v2(E) full length. Cut as shown and use remainder of bars in opposite face.

PILE DATA

Type: HP 12x53 with Pile Shoes
Nominal Required Bearing: 419 k
Factored Resistance Available: 210 k
Est. Length: 60'-0"
No. Production Piles: 4
No. Test Piles: 1

DESIGNED	B.B.
CHECKED	C.J.F.
DRAWN	J.G.
CHECKED	C.J.F. & B.B.

Notes:
Pour steps monolithically with cap.
See Sheet 2 of 22 for section thru Integral Abutment showing drainage details.
For details of piles and Concrete Encasement See Sheet 19 of 22
Space reinforcement in cap to miss anchor bolts.

**EAST ABUTMENT
KINMUNDY/LOUISVILLE ROAD
OVER ILLINOIS CENTRAL RR
STA. 475+50.44**



**BERNARDIN
LOCHMUELLER &
ASSOCIATES, INC.**

3 Oak Drive
Maryville, IL 62062-5635
Local (618) 298-4655
Fax 618-288-4666

SHEET NO. 13 22 SHEETS	F.A.S. RTE. 2703	SECTION (9-VBR)B	COUNTY CLAY	TOTAL SHEETS 65	SHEET NO. 35
	SN 013-0044		CONTRACT NO.		
FED. ROAD DIST. NO. _ ILLINOIS		FED. AID PROJECT			