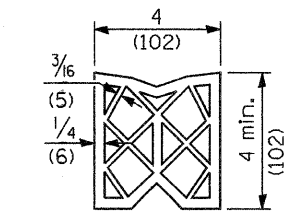
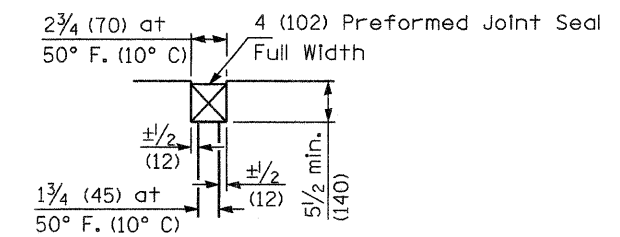


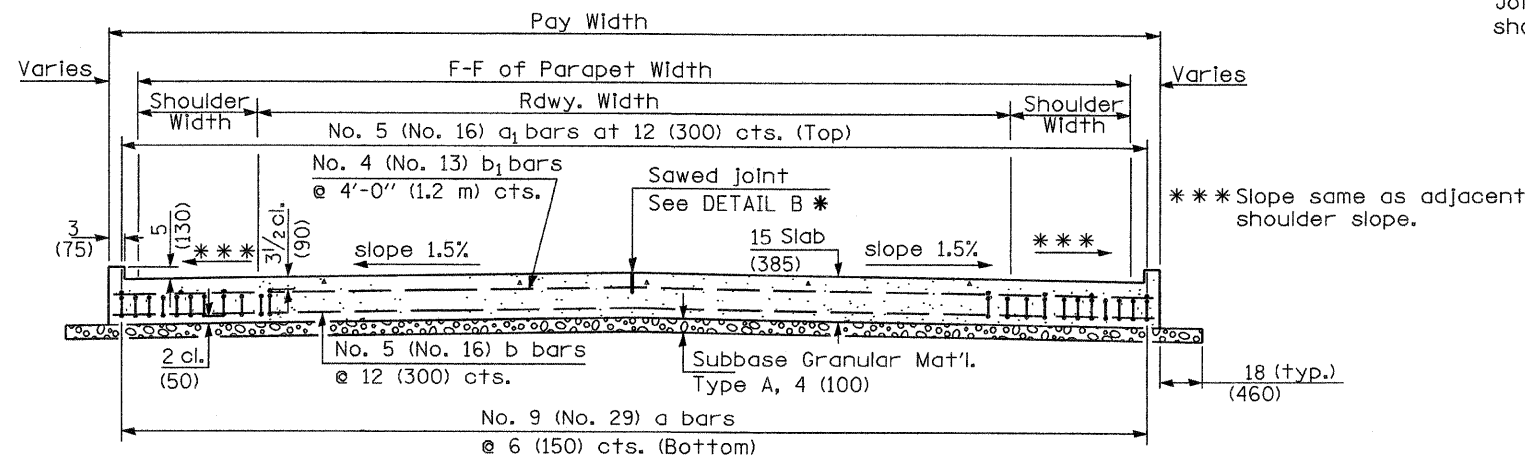
① Stagger No. 9 (No. 29) a bars as shown on plan - full width



PREFORMED JOINT SEAL

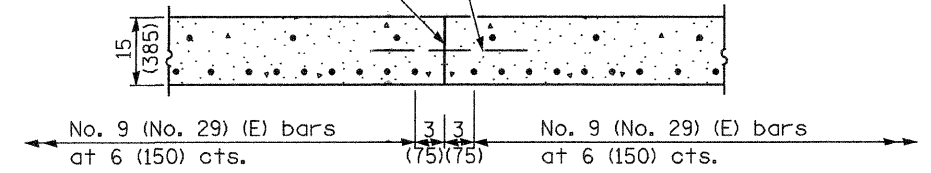


DETAIL A



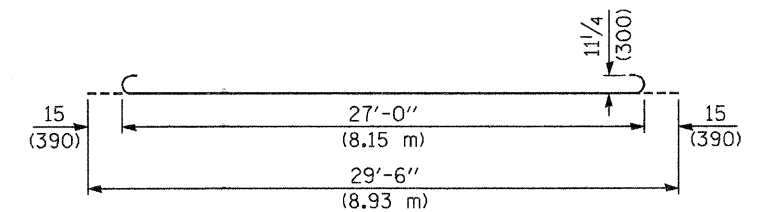
(See Plan for Dimensions not shown)

Longitudinal Construction Joint in accordance with details shown on Standard 420001.

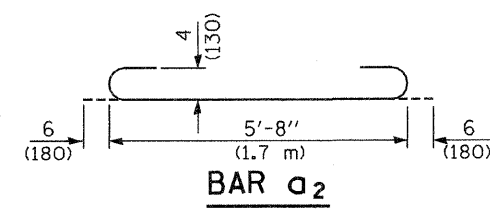


OPTIONAL LONGITUDINAL CONSTRUCTION JOINT

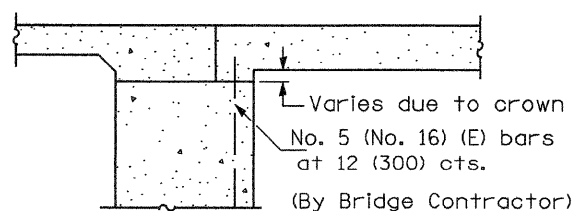
As approved by the Engineer, the Contractor may elect to reduce the widths of pour by use of the Optional Longitudinal Construction Joint shown. Joints shall be located at the edge of a traffic lane.



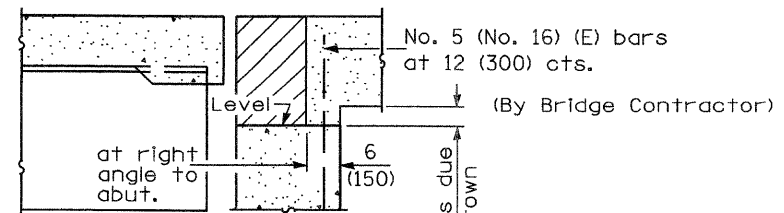
BAR a



BAR a₂



SECTION E-E
(Integral Abutments)



SECTION E-E
(Jointed Abutments)

DESIGN STRESSES
 f_y = 60,000 p.s.i. (400 MPa)
 f'_c = 3,500 p.s.i. (24 MPa)
 n = 8.5

BRIDGE APPROACH PAVEMENT	
(Sheet 3 of 4)	
TOTAL SHEET 65 SHEET NO. 44C	

Illinois Department of Transportation	
APPROVED January 1, 2008	ISSUED
<i>Ralph E. Anderson</i> ENGINEER OF BRIDGES AND STRUCTURES	16-1-1
APPROVED January 1, 2008	
<i>Ken E. Han</i> ENGINEER OF DESIGN AND ENVIRONMENT	