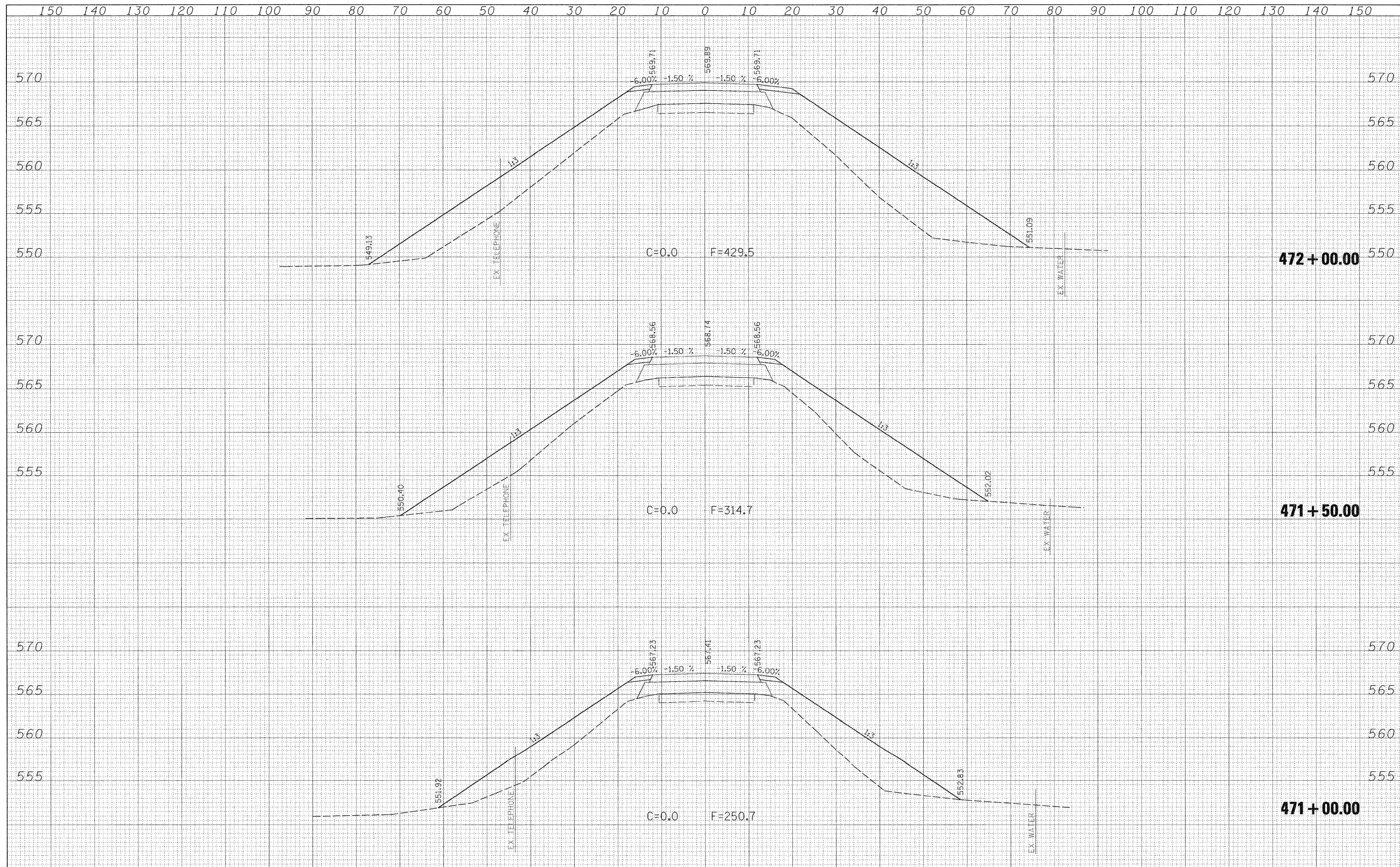


DATE	
BY	
SURVEYED	
PLOTTED	
TEMPLATE	
AREAS	
CHECKED	
NO.	

DATE	
BY	
SURVEYED	
PLOTTED	
TEMPLATE	
AREAS	
CHECKED	
NO.	



FILE NAME =	USER NAME = psul	DESIGNED - JLS	REVISED -	STATE OF ILLINOIS DEPARTMENT OF TRANSPORTATION	CROSS SECTIONS - KINMUNDYLOUISVILLE ROAD (FAS 2703)	F.A.S. RTE. 2703	SECTION (9-VBR)R	COUNTY CLAY	TOTAL SHEETS 65	SHEET NO. 49		
S:\Projects\407-0008 080 Dls1 7 Various\NO 2 Kinmundy.dgn	PLLOT SCALE = 10.0000' / IN.	DRAWN - MAB	REVISED -			SCALE: 1"=10'	SHEET NO. 5 OF 21 SHEETS	STA. 471+00.00 TO STA. 472+00.00	CONTRACT NO. 74136			
	PLLOT DATE = 12/3/2008	CHECKED - BRM	REVISED -			ILLINOIS FED. AID PROJECT						
		DATE - 5-20-08	REVISED -									