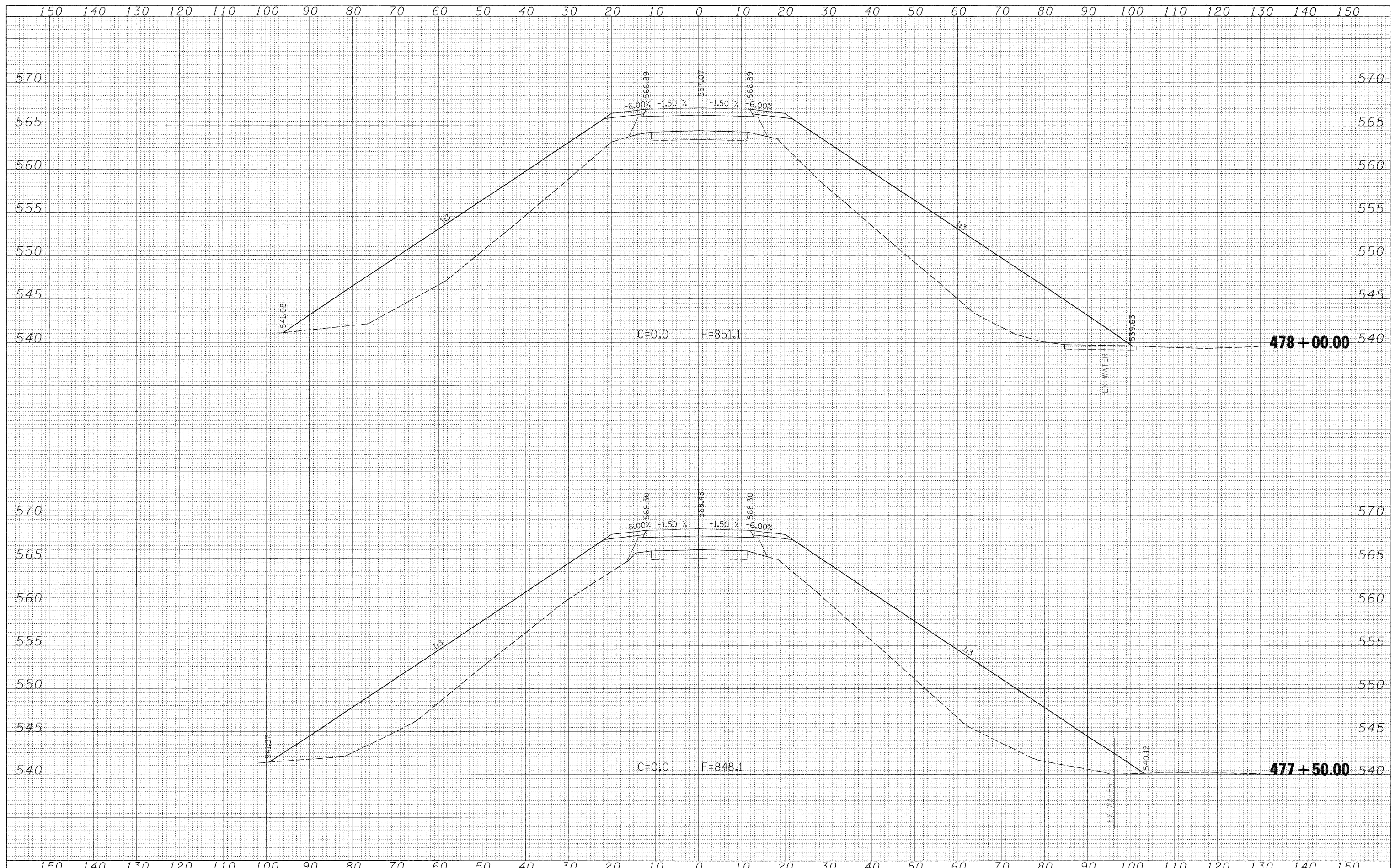


FINAL SURVEY	SURVEYED	BY	DATE
NOTE BOOK	PLOTTED		
NO.	TEMPLATE		
	AREAS		
	CHECKED		

ORIGINAL SURVEY	SURVEYED	BY	DATE
NOTE BOOK	PLOTTED		
NO.	TEMPLATE		
	AREAS		
	CHECKED		



FILE NAME =
 S:\Projects\477-0008_080 Dist 1 Various\W0 2 Kincaid\over 1000\12/3/2008.dgn

USER NAME = psul
 DESIGNED - JLS
 DRAWN - MAB
 CHECKED - BRM
 DATE - 5-20-08

REVISED -
 REVISED -
 REVISED -
 REVISED -

**STATE OF ILLINOIS
 DEPARTMENT OF TRANSPORTATION**

CROSS SECTIONS - KINMUNDY/LOUISVILLE ROAD (FAS 2703)

SCALE: 1"=10' SHEET NO. 13 OF 21 SHEETS STA. 477+50.00 TO STA. 478+00.00

F.A.S. RTE. 2703	SECTION (9-VBR)R	COUNTY CLAY	TOTAL SHEETS 65	SHEET NO. 57
CONTRACT NO. 74136		ILLINOIS FED. AID PROJECT		