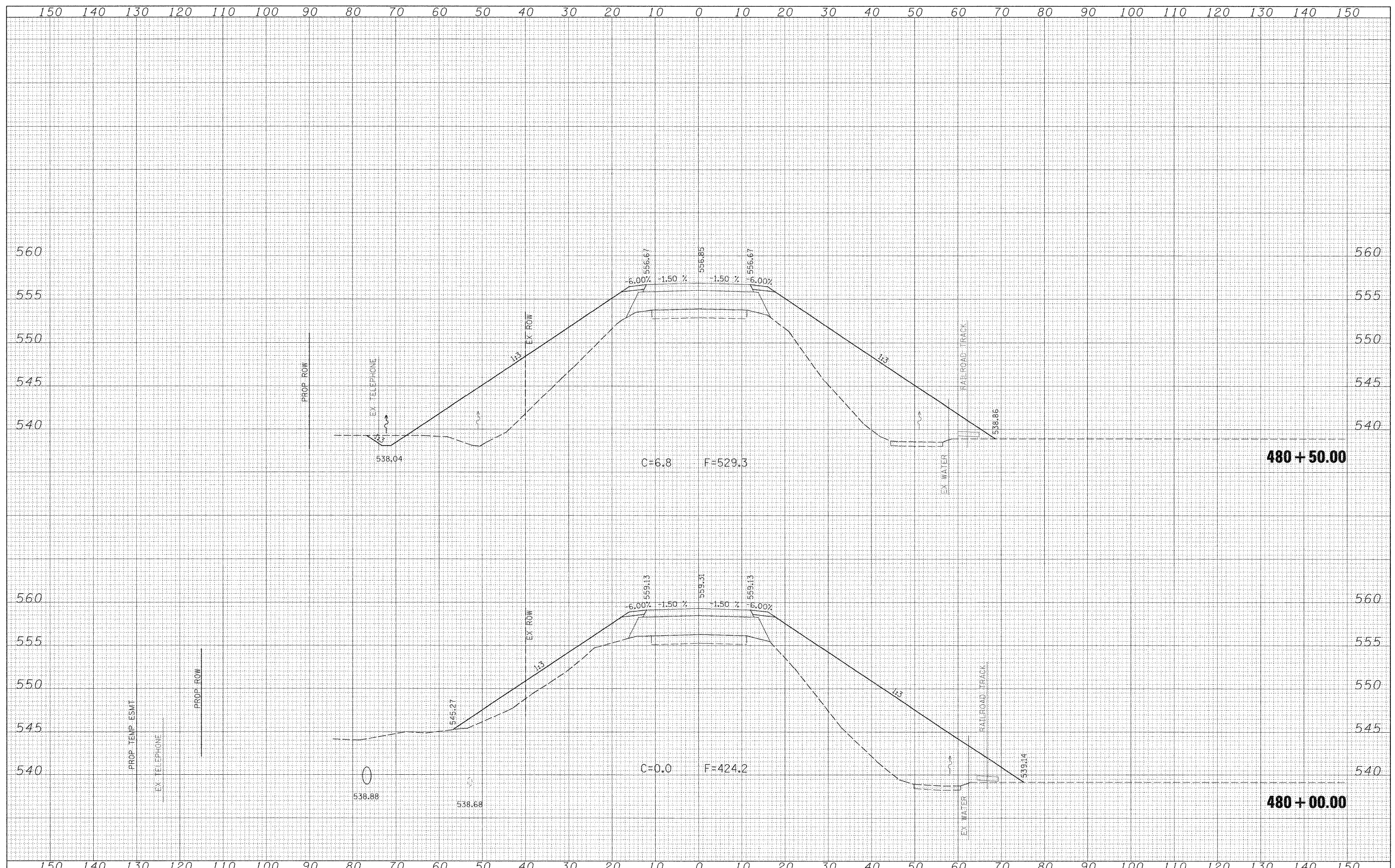


DATE	
BY	
FINAL SURVEY	SURVEYED
NOTE BOOK	PLOTTED
NO.	TEMPLATE
	AREAS
	CHECKED

DATE	
BY	
ORIGINAL SURVEY	SURVEYED
NOTE BOOK	PLOTTED
NO.	TEMPLATE
	AREAS
	CHECKED



FILE NAME = S:\Projects\407-0008\_08D\01st 7 Various\W0 2 Kimmundy over ICD\rdgn\crossh\_KINMUNDY.dgn  
 USER NAME = paul  
 PLOT SCALE = 10.0000' / IN.  
 PLOT DATE = 12/3/2008

DESIGNED - JLS  
 DRAWN - MAB  
 CHECKED - BRM  
 DATE - 5-20-08

REVISED -  
 REVISED -  
 REVISED -  
 REVISED -

**STATE OF ILLINOIS  
 DEPARTMENT OF TRANSPORTATION**

**CROSS SECTIONS - KINMUNDY/LOUISVILLE ROAD (FAS 2703)**  
 SCALE: 1"=10'    SHEET NO. 16 OF 21 SHEETS    STA. 480+00.00 TO STA. 480+50.00

F.A.S. RTE. 2703	SECTION (9-VBR)R	COUNTY CLAY	TOTAL SHEETS 65	SHEET NO. 60
FED. ROAD DIST. NO.		ILLINOIS FED. AID PROJECT		
CONTRACT NO. 74136				