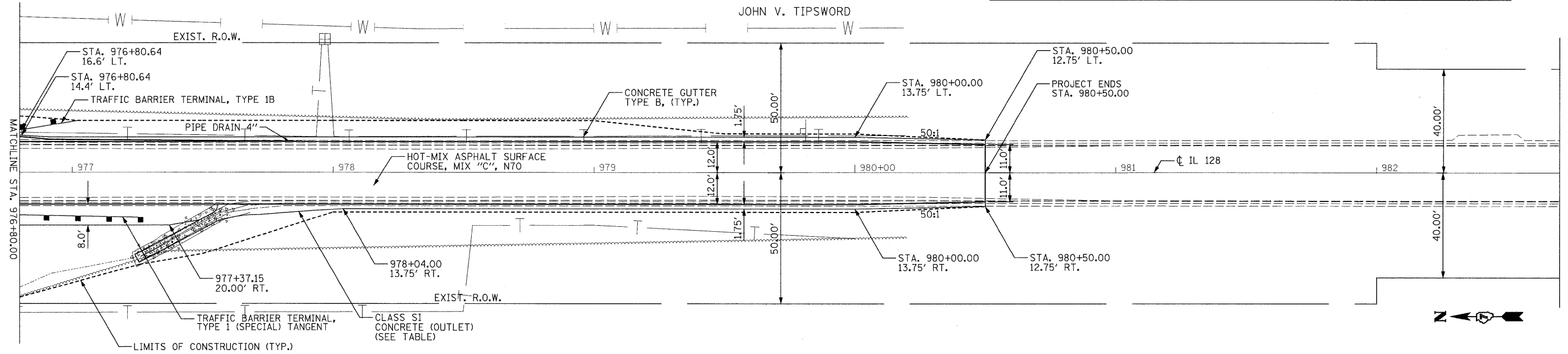


N.E. SEC 12, N.W. SEC. 7, T. 8 N., R. 3 E.

LOCATION	CLASS SI CONCRETE (OUTLET) TABLE			QUANTITY (CU YD)
	LENGTH FROM:			
STA. 977+24.78 TO STA. 978+03.73, RT	A-A TO D-D	D-D TO E-E	E-E TO OUTLET	5.8
	48'	4'	33.4'	

DATE	
BY	
REVISIONS	
NO.	
DESCRIPTION	

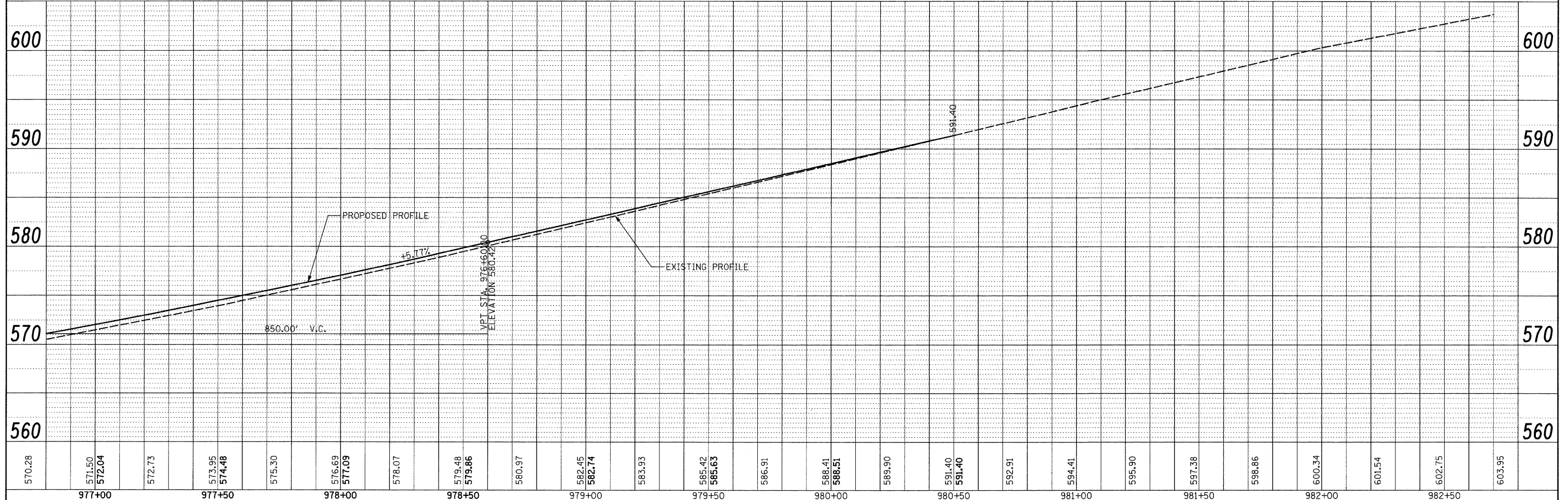


W.W. DOTY

NOTE:
 SEE EROSION CONTROL PLAN (SHEET 22)
 FOR RIP RAP INFORMATION.

N.E. SEC 12, N.W. SEC. 7, T. 8 N., R. 4 E.

DATE	
BY	
REVISIONS	
NO.	
DESCRIPTION	



FILE NAME =	USER NAME = wenthejd	DESIGNED - SEM	REVISED -	STATE OF ILLINOIS DEPARTMENT OF TRANSPORTATION	IL 128 OVER WOLF CREEK PLAN AND PROFILE	F.A. RTE.	SECTION	COUNTY	TOTAL SHEETS	SHEET NO.	
C:\Documents and Settings\wenthejd\Local Settings\Temporary Internet Files\Content.Out	DRAWN 1832P\077409/08 (2).dgn	CHECKED - GBM 10/14/08	REVISED -			2801	(102B)B-1	EFFINGHAM	51	17	
PLOT SCALE = 20.0000' / IN.	DATE - 10/15/08	REVISED -	SCALE:			SHEET NO.	OF SHEETS	STA.	TO STA.	FED. ROAD DIST. NO.	ILLINOIS FED. AID PROJECT
PLOT DATE = 12/15/2008	DATE - 10/15/08	REVISED -								CONTRACT NO. 74232	