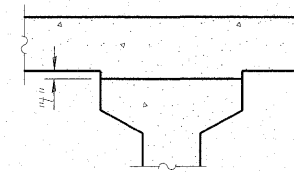


STATE OF ILLINOIS  
DEPARTMENT OF TRANSPORTATION

ROUTE NO.	SECTION	COUNTY	TOTAL SHEETS	SHEET NO.
FAS 2801 IL 128	(102B) B-1	EFFINGHAM	51	27
FED. ROAD DIST. NO. 7		ILLINOIS	FED. AID PROJECT	

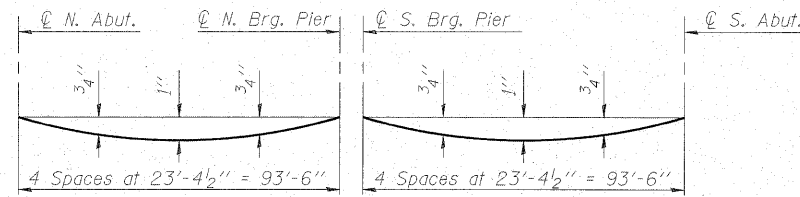
SHEET NO. 5  
23 SHEETS

Contract # 74232



To determine "f": After all precast prestressed beams have been erected, elevations of the top flanges of the beams shall be taken at intervals shown below. These elevations subtracted from the "Theoretical Grade Elevations Adjusted for Dead Load Deflections" shown below, minus slab thickness, equals the fillet heights "f" above top flanges of beams.

FILLET HEIGHTS



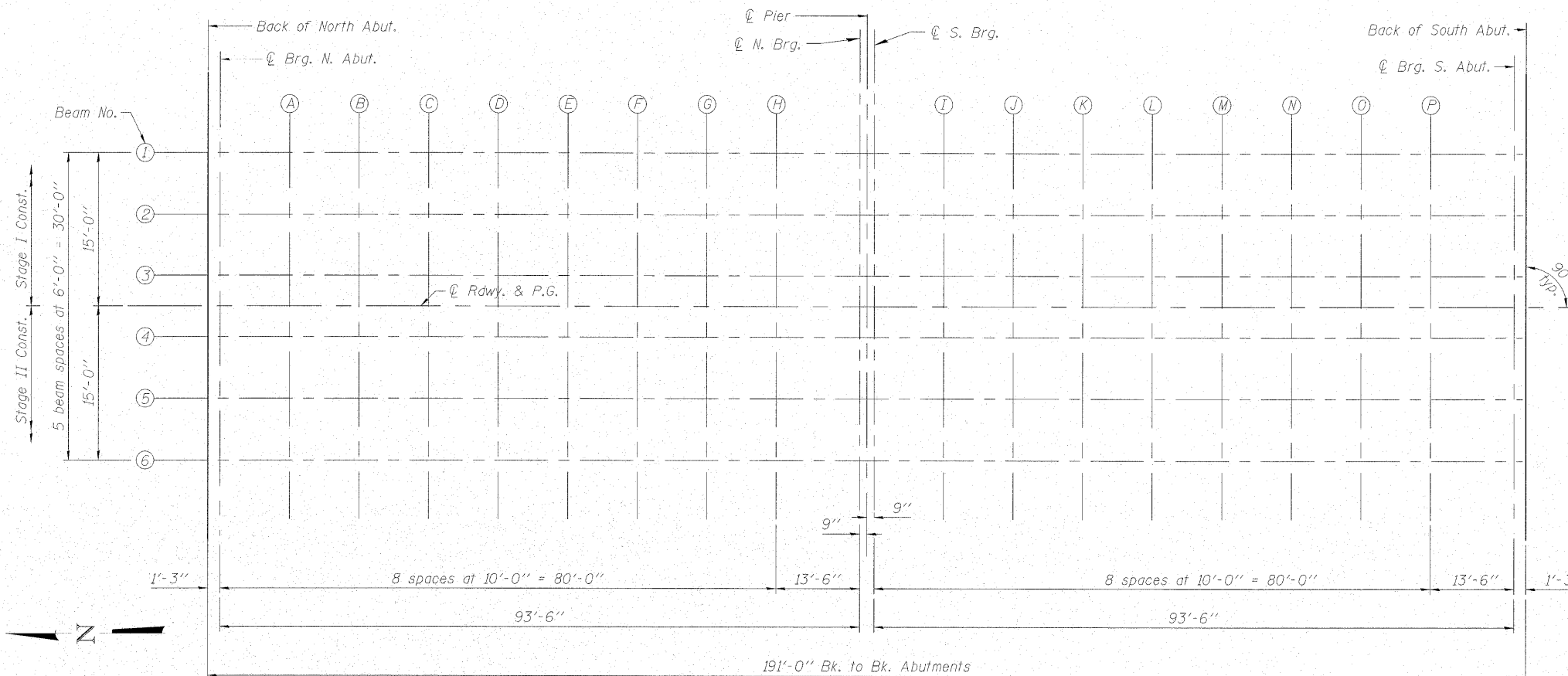
DEAD LOAD DEFLECTION DIAGRAM

(Includes weight of concrete, excluding beams).

Note:  
The above deflections are not to be used in the field if the engineer is working from the grade elevations adjusted for dead load deflections as shown below.

BEAM 1

Location	Station	Offset	Theoretical Grade Elevations	Theoretical Grade Elevations Adjusted For Dead Load Deflection
Back of North Abut.	973+80.50	-15.00	560.09	560.09
CL Brg. N. Abut.				
A	973+81.75	-15.00	560.12	560.12
B	974+01.75	-15.00	560.66	560.71
C	974+11.75	-15.00	560.94	561.01
D	974+21.75	-15.00	561.22	561.31
E	974+31.75	-15.00	561.51	561.60
F	974+41.75	-15.00	561.81	561.89
G	974+51.75	-15.00	562.12	562.18
H	974+61.75	-15.00	562.43	562.46
CL N. Brg. Pier	974+75.25	-15.00	562.86	562.86
CL S. Brg. Pier				
I	974+76.75	-15.00	562.91	562.91
J	974+86.75	-15.00	563.23	563.26
K	974+96.75	-15.00	563.57	563.62
L	975+06.75	-15.00	563.91	563.98
M	975+16.75	-15.00	564.26	564.34
N	975+26.75	-15.00	564.61	564.70
O	975+36.75	-15.00	564.97	565.05
P	975+46.75	-15.00	565.34	565.40
	975+56.75	-15.00	565.71	565.75
CL Brg. S. Abut.	975+70.25	-15.00	566.23	566.23
Back of South Abut.	975+71.50	-15.00	566.27	566.27



DESIGNED -	BAS
CHECKED -	KEF
DRAWN -	LAD
CHECKED -	RJA

TOP OF SLAB ELEVATIONS  
IL ROUTE 128 OVER WOLF CREEK  
F.A.S. RTE. 2801 - SECTION (102B)B-1  
EFFINGHAM COUNTY  
STATION 974+76.00  
STRUCTURE NO. 025-0105