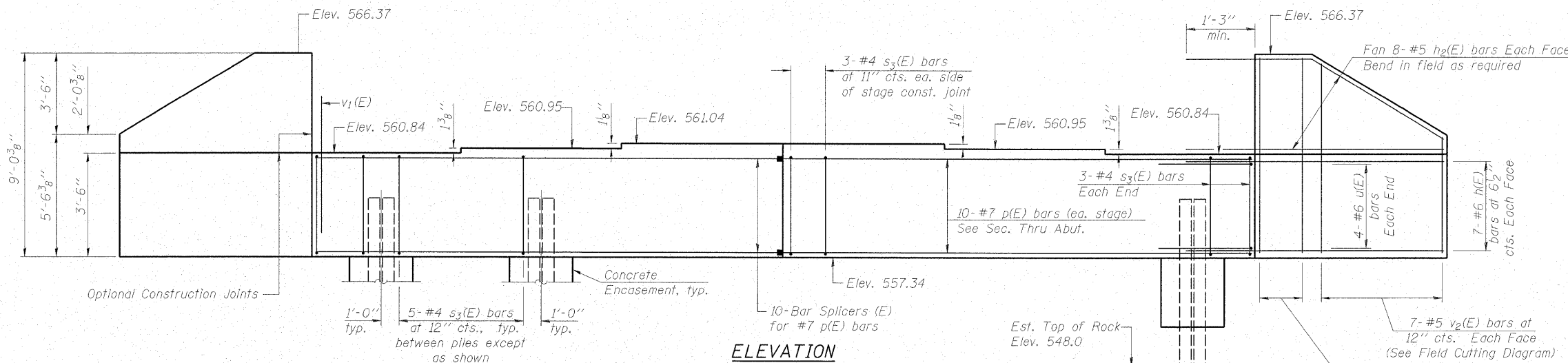


STATE OF ILLINOIS
DEPARTMENT OF TRANSPORTATION

ROUTE NO.	SECTION	COUNTY	TOTAL SHEETS	SHEET NO.	SHEET NO. 18
FAS 2801 IL 128	(102B) B-1	EFFINGHAM	51	40	23 SHEETS
FED. ROAD DIST. NO. 7	ILLINOIS	FED. AID PROJECT-			

Contract # 74232

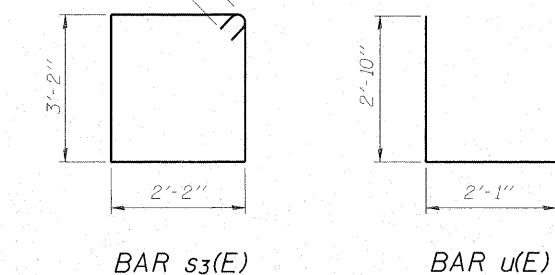
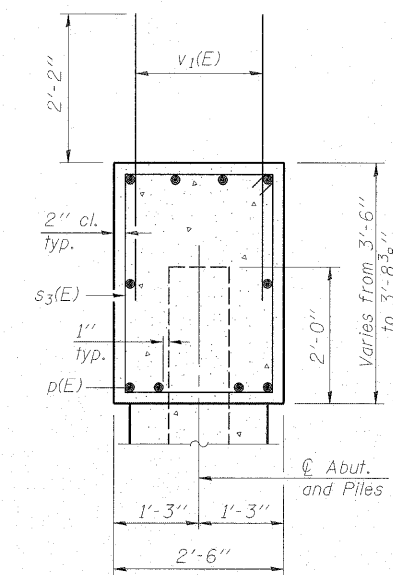
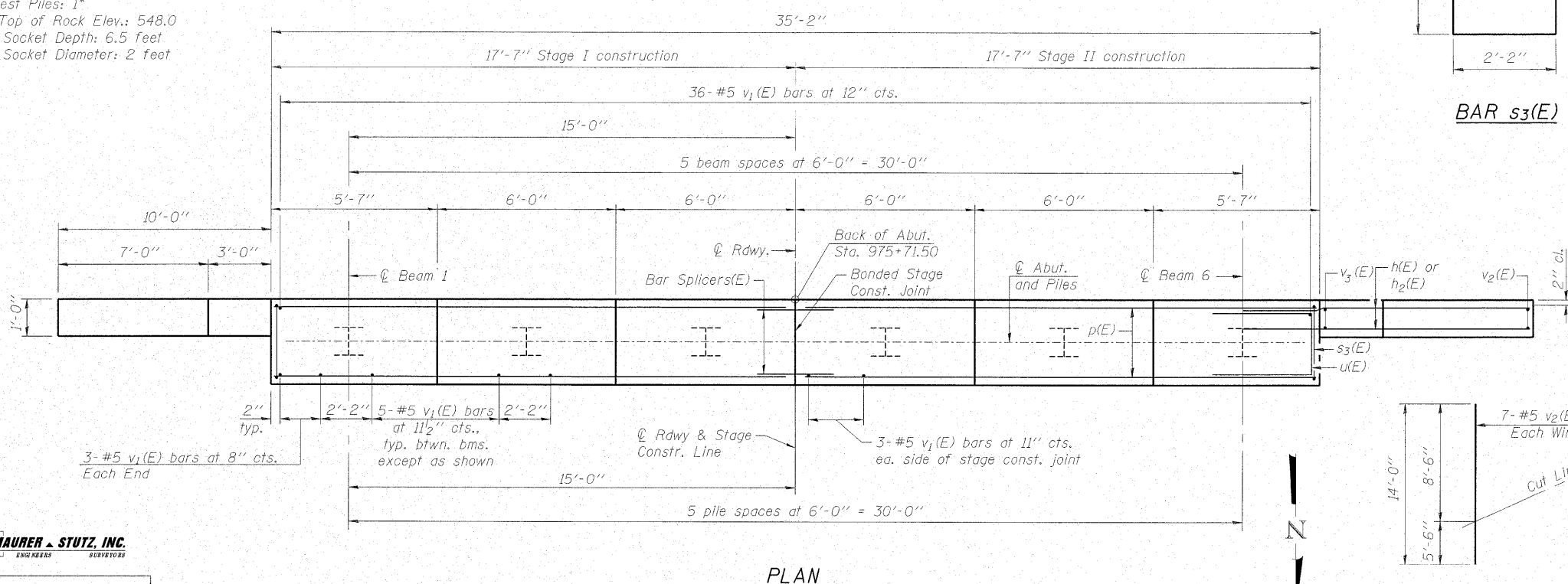
Notes: Pour steps monolithically with cap.



* See Special Provisions for "Setting and Driving Piles in Rock."

PILE DATA

Type: Steel HP12x63
 Nominal Required Bearing: 497 kips*
 Factored Resistance Available: 248 kips
 Est. Length: 28 feet
 No. Production Piles: 5
 No. Test Piles: 1*
 Est. Top of Rock Elev.: 548.0
 Rock Socket Depth: 6.5 feet
 Rock Socket Diameter: 2 feet



BILL OF MATERIAL

Bar	No.	Size	Length	Shape
h(E)	28	#6	12'-4"	—
h ₂ (E)	32	#5	11'-11"	—
p(E)	20	#7	17'-3"	—
s ₃ (E)	32	#4	11'-5"	□
u(E)	8	#6	7'-9"	—
v ₁ (E)	68	#5	4'-4"	—
v ₂ (E)	14	#5	14'-0"	—
v ₃ (E)	12	#5	8'-9"	—
Structure Excavation			Cu. Yd.	131
Concrete Structures			Cu. Yd.	17.5
Concrete Encasement			Cu. Yd.	2.1
Reinforcement Bars, Epoxy Coated			Pound	2580
Furnishing Steel Piles HP12x63			Foot	140
Setting and Driving Piles in Rock			Each	5
Setting and Driving Test Piles in Rock HP12x63			Each	1

For details of Bar Splicers, see sheet 21 of 23.
 For details of piles and Concrete Encasement, see sheet 20 of 23.

SOUTH ABUTMENT
 IL ROUTE 128 OVER WOLF CREEK
 F.A.S. RTE. 2801 - SECTION (102B)B-1
 EFFINGHAM COUNTY
 STATION 974+76.00
 STRUCTURE NO. 025-0105

DESIGNED - BAS
CHECKED - KEF
DRAWN - LAD
CHECKED - RJA