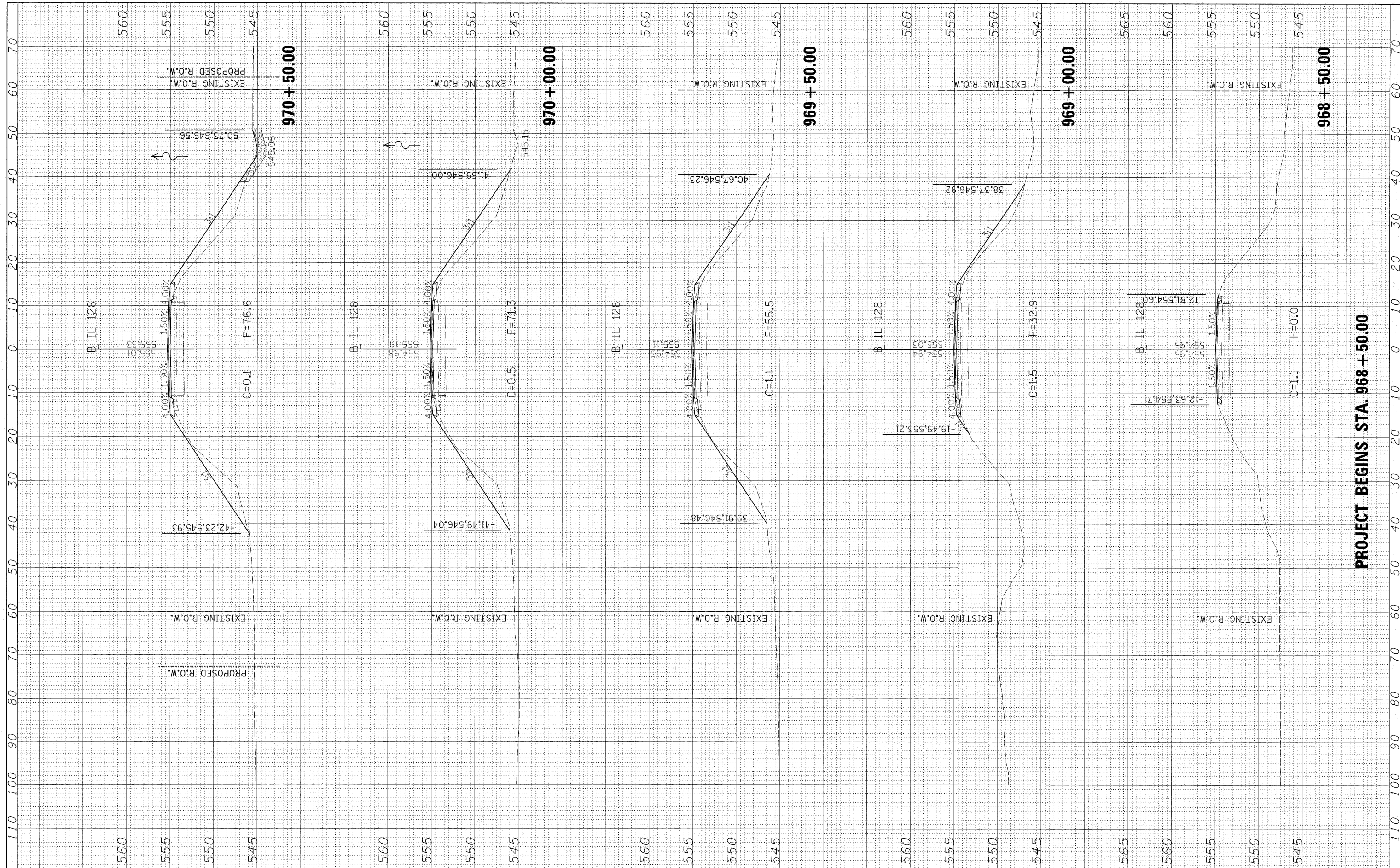


FINAL SURVEY	SURVEYED	BY	DATE
NO.	NO.		
PLOTTED	PLOTTED		
AREAS CHECKED	AREAS CHECKED		

ORIGINAL SURVEY	SURVEYED	BY	DATE
NO.	NO.		
PLOTTED	PLOTTED		
AREAS CHECKED	AREAS CHECKED		



PROJECT BEGINS STA. 968 + 50.00

FILE NAME = #FILE#

USER NAME = #USER#

DESIGNED - JDS
 DRAWN - WLL 10/14/08
 CHECKED - GBM 10/14/08
 DATE - 10/15/08

REVISED -
 REVISED -
 REVISED -
 REVISED -

STATE OF ILLINOIS
 DEPARTMENT OF TRANSPORTATION

IL 128 OVER WOLF CREEK CROSS SECTIONS

SCALE: SHEET NO. OF SHEETS STA. 968+50.00 TO STA. 970+50.00

F.A.S. RTE. 2801	SECTION (102B)B-1	COUNTY EFFINGHAM	TOTAL SHEETS 51	SHEET NO. 46
FED. ROAD DIST. NO. ILLINOIS FED. AID PROJECT			CONTRACT NO. 74232	