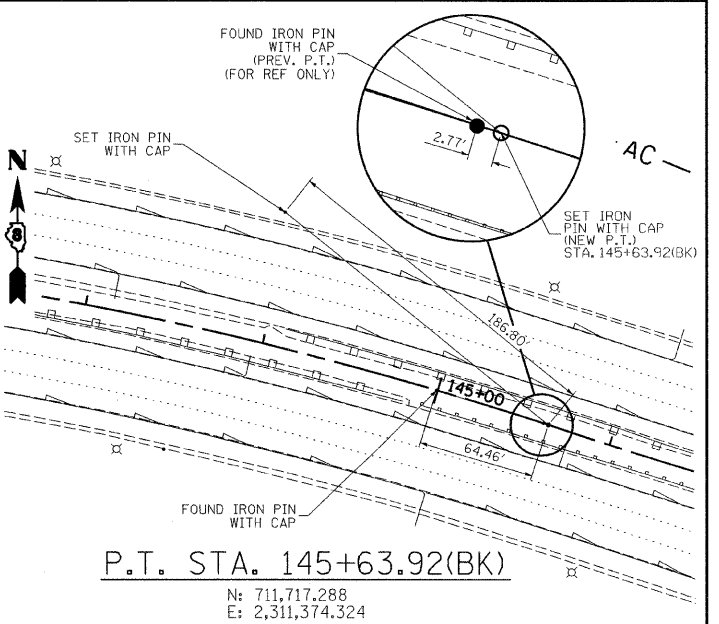
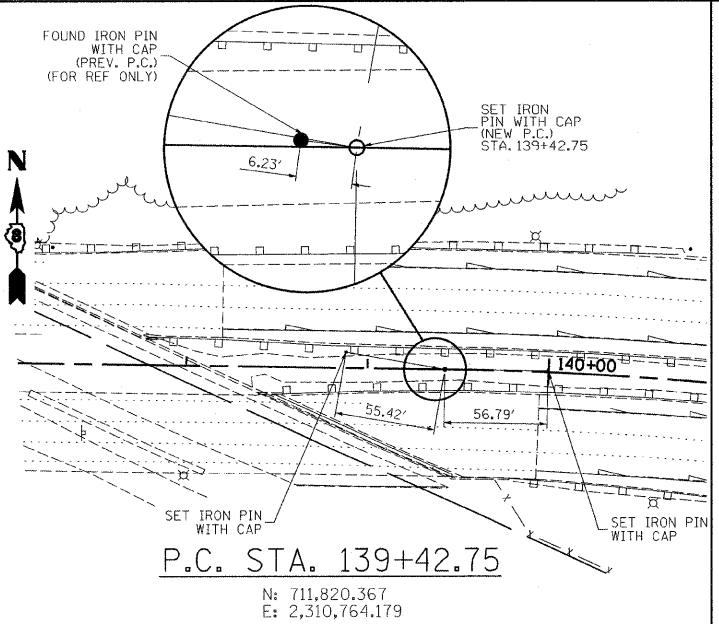
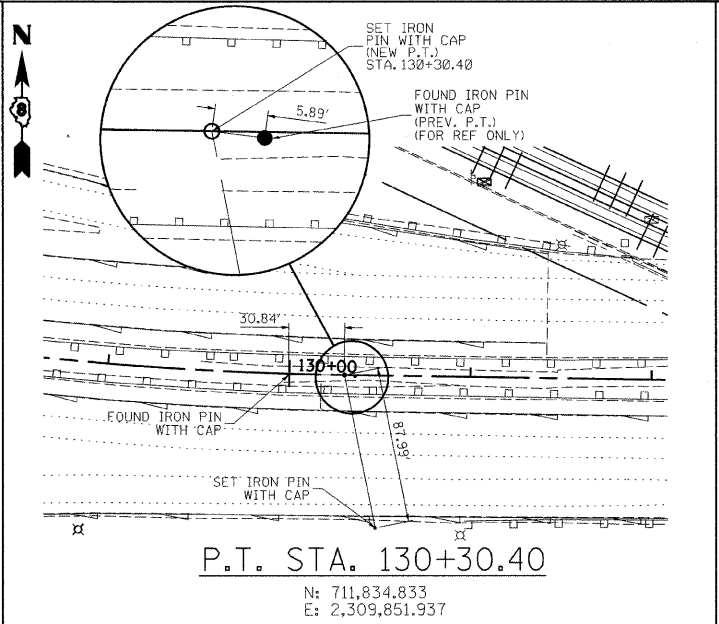
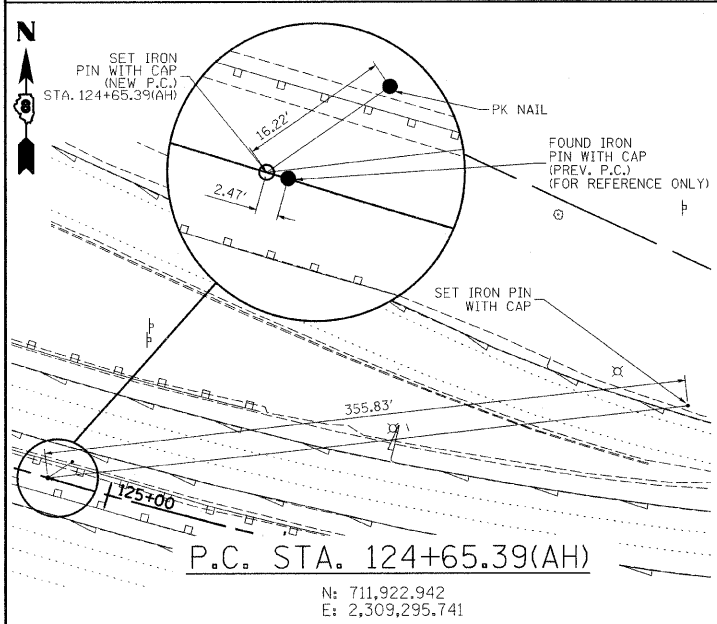
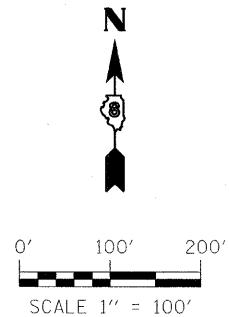


PROP. CURVE I-64-2-2
 PI STA. = 127+49.79
 $\Delta = 16^\circ 11' 11''$ (LT)
 $D = 2^\circ 51' 53''$
 $R = 2,000.00'$
 $T = 284.40'$
 $L = 565.01'$
 $E = 20.12'$
 $e = 2.50\%$
 T.R. = -----
 S.E. RUN = -----
 P.C. STA. = 124+65.39
 P.T. STA. = 130+30.40

PROP. CURVE I-64-3-1
 PI STA. = 142+55.74
 $\Delta = 17^\circ 21' 40''$ (RT)
 $D = 2^\circ 47' 42''$
 $R = 2,050.00'$
 $T = 312.98'$
 $L = 621.17'$
 $E = 23.75'$
 $e = 2.50\%$
 T.R. = -----
 S.E. RUN = -----
 P.C. STA. = 139+42.75
 P.T. STA. = 145+63.92

NOTE:
 FOUND IRON PINS WITH CAPS SHOWN BELOW ARE FROM THE PREVIOUS I-64 ALIGNMENT PROVIDED BY THE DISTRICT.
 SET IRON PINS WITH CAPS SHOWN BELOW ARE FOR THE NEW I-64 ALIGNMENT ESTABLISHED TO FOLLOW THE EXISTING ALIGNMENT OF THE BRIDGES.
 SPIRAL CURVES ON THE I-64 ALIGNMENT AS SHOWN ON PREVIOUS PROJECTS HAVE BEEN ELIMINATED FOR SIMPLICITY.

ALIGNMENT TIES



FILE NAME = P:\262621B\dgn\CADD Sheets\0876876-sh1	USER NAME = jheger	DESIGNED - DRB	REVISED -	STATE OF ILLINOIS DEPARTMENT OF TRANSPORTATION	ALIGNMENT, TIES AND BENCHMARKS			F.A.I. RTE. 64	SECTION 82-2VB-2	COUNTY ST. CLAIR	TOTAL SHEETS 153	SHEET NO. 12
PLOT SCALE = 100.0000' / IN.	DATE = 8/7/2009	DRAWN - JWS	REVISED -		SCALE: 1:100	SHEET NO. 1 OF 1 SHEETS	STA. 124+35.01 TO STA. 150+87.44	CONTRACT NO. 76867				
PLOT DATE = 8/7/2009	DATE = 8/7/2009	CHECKED - SUK	REVISED -									
		DATE = 8/7/2009	REVISED -									