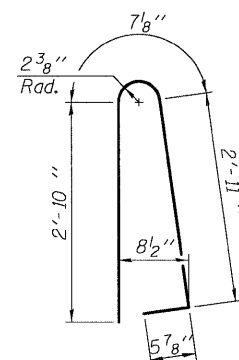
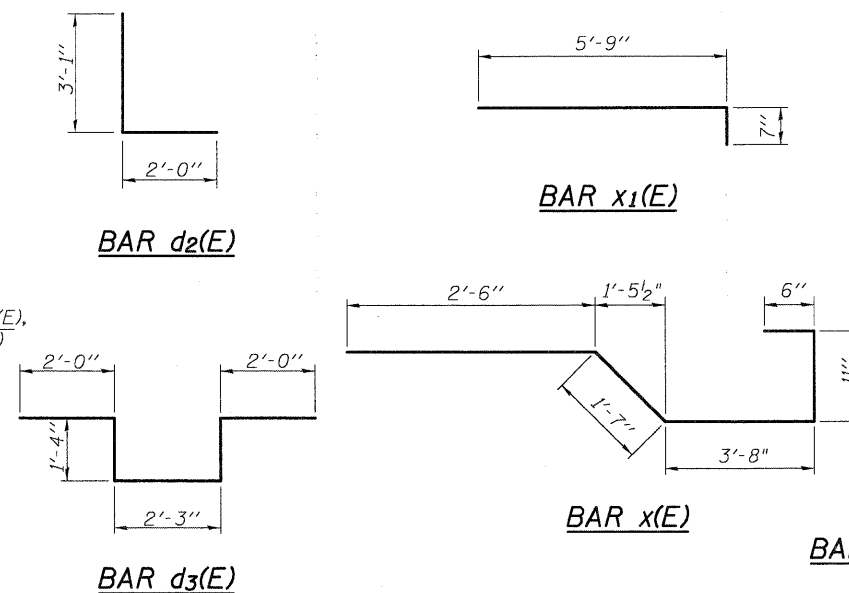


**SECTION THRU PARAPET**  
Showing Drainage Scupper, DS-11

\*Place bars in back of anchor bolt as shown if required to maintain 1" cl. ( $\pm 0-1/8$ "). Anchor bolts should be tied to d(E) and h(E) bars.



**BAR d(E)**



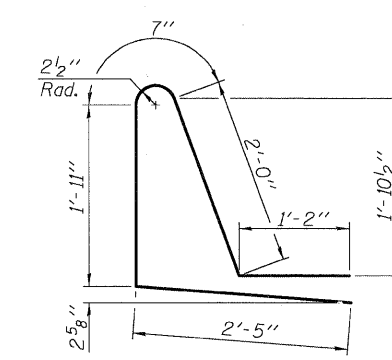
**BAR d2(E)**

**BAR x1(E)**

**BAR d3(E)**

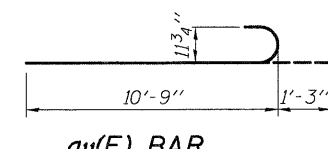
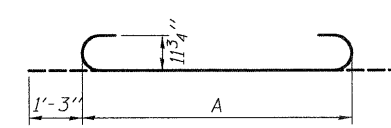
**BAR DIMENSIONS**

Bar	A
a9(E)	14'-6"
a20(E)	8'-3"
a21(E)	13'-2"
a22(E)	15'-8"



**BAR d1(E)**

**a9(E), a20(E), a21(E) & a22(E) BARS**



**a11(E) BAR**

**EB SUPERSTRUCTURE  
BILL OF MATERIAL**

Bar	No.	Size	Length	Shape
d(E)	816	#5	16'-8"	—
a1(E)	571	#5	16'-2"	—
a2(E)	816	#5	31'-8"	—
a3(E)	571	#5	31'-2"	—
a4(E)	1632	#6	6'-0"	—
a5(E)	16	#9	23'-8"	—
a6(E)	12	#9	30'-0"	—
a7(E)	2	#9	32'-9"	—
a8(E)	4	#9	37'-9"	—
a9(E)	36	#9	17'-0"	—
a10(E)	12	#9	29'-9"	—
a11(E)	6	#9	12'-0"	—
a12(E)	32	#5	1'-6"	—
b(E)	901	#5	29'-10"	—
b1(E)	294	#6	41'-4"	—
b2(E)	738	#5	28'-3"	—
e(E)	1048	#5	7'-0"	—
e1(E)	1048	#5	8'-4"	—
d2(E)	6	#6	5'-1"	—
d3(E)	12	#6	8'-11"	—
e2(E)	168	#4	19'-4"	—
e1(E)	64	#4	19'-8"	—
e2(E)	140	#4	16'-0"	—
e5(E)	16	#8	32'-10"	—
e6(E)	8	#8	19'-8"	—
e7(E)	12	#8	31'-1"	—
e10(E)	16	#4	30'-9"	—
e11(E)	12	#4	28'-9"	—
x(E)	70	#5	9'-9"	—
x1(E)	94	#5	6'-4"	—
Reinforcement Bars, Epoxy Coated	Pound	185,090		
Concrete Superstructure	Cu. Yds.	756.2		
Bar Splicers	Each	1,403		

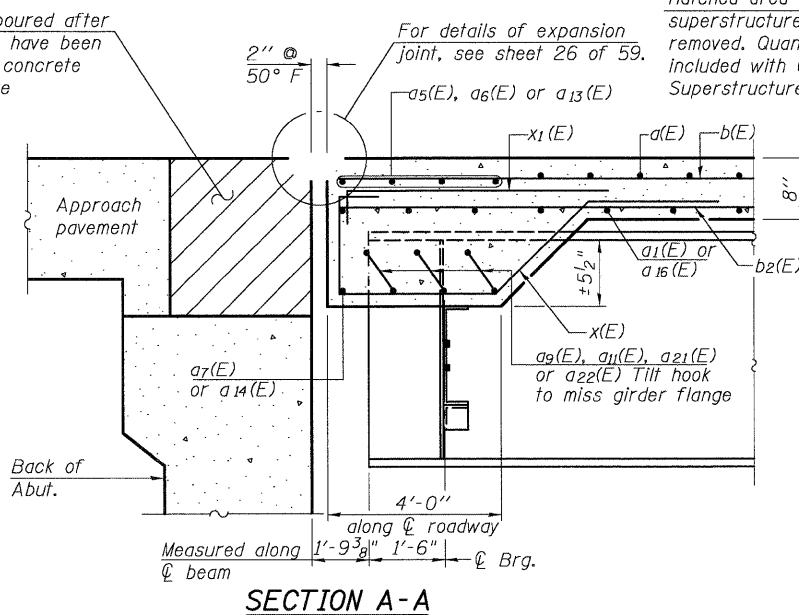
**WB SUPERSTRUCTURE  
BILL OF MATERIAL**

Bar	No.	Size	Length	Shape
d(E)	879	#5	16'-8"	—
a1(E)	571	#5	16'-2"	—
a2(E)	126	#5	31'-8"	—
a3(E)	81	#5	31'-2"	—
a4(E)	1774	#6	6'-0"	—
a5(E)	16	#9	23'-8"	—
a6(E)	12	#9	30'-0"	—
a7(E)	2	#9	32'-9"	—
a8(E)	2	#9	37'-9"	—
a9(E)	18	#9	17'-0"	—
a10(E)	6	#9	12'-0"	—
a12(E)	32	#5	1'-6"	—
a13(E)	12	#9	34'-11"	—
a14(E)	3	#9	32'-1"	—
a15(E)	752	#5	19'-1"	—
a16(E)	732	#5	13'-4"	—
a17(E)	752	#5	18'-1"	—
a18(E)	732	#5	12'-7"	—
a19(E)	234	#5	6'-6"	—
a20(E)	6	#9	10'-9"	—
a21(E)	12	#9	15'-8"	—
a22(E)	6	#9	18'-2"	—
b(E)	578	#5	29'-10"	—
b1(E)	342	#6	41'-4"	—
b2(E)	468	#5	28'-3"	—
b3(E)	324	#5	29'-0"	—
b4(E)	425	#5	30'-7"	—
d(E)	1063	#5	7'-0"	—
d1(E)	1063	#5	8'-4"	—
d2(E)	3	#6	5'-1"	—
d3(E)	6	#6	8'-11"	—
e(E)	84	#4	19'-4"	—
e1(E)	64	#4	19'-8"	—
e2(E)	70	#4	16'-0"	—
e3(E)	98	#4	17'-0"	—
e4(E)	70	#4	16'-7"	—
e5(E)	8	#8	32'-10"	—
e6(E)	8	#8	19'-8"	—
e7(E)	6	#8	31'-1"	—
e8(E)	8	#8	33'-10"	—
e9(E)	6	#8	32'-0"	—
e10(E)	8	#4	30'-9"	—
e11(E)	6	#4	28'-9"	—
e12(E)	8	#4	31'-8"	—
e13(E)	6	#4	29'-8"	—
x(E)	76	#5	9'-9"	—
x1(E)	100	#5	6'-4"	—
Reinforcement Bars, Epoxy Coated	Pound	208,410		
Concrete Superstructure	Cu. Yds.	796.3		
Bar Splicers	Each	1,466		

Bars indicated thus 1 x 3 - #8 etc. indicates 1 line of bars with 3 lengths per line.

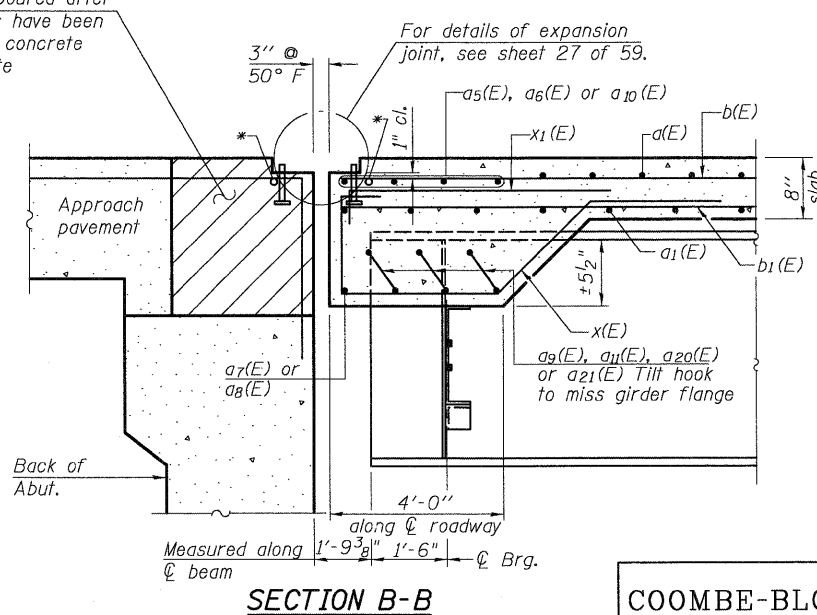
Note: See Sheet 59 of 59 for Bar Splicer details.

Hatched area to be poured after superstructure forms have been removed. Quantity of concrete included with Concrete Superstructure.



**SECTION A-A**

Hatched area to be poured after superstructure forms have been removed. Quantity of concrete included with Concrete Superstructure.



**SECTION B-B**

**SUPERSTRUCTURE DETAILS  
STRUCTURE NO. 082-0162 (EB)  
STRUCTURE NO. 082-0163 (WB)**

**COOMBE-BLOXDORF P.C.**  
Engineers / Land Surveyors  
Springfield, Illinois  
Design Firm License No. 184-002703

PROJECT NO. 07004  
SCALE  
DATE 12/17/08  
DRAWN BY TFC  
CHECKED BY RM/MCB

SHEET NO. 25  
59 SHEETS

F.A.I. RTE.	SECTION	COUNTY	TOTAL SHEETS	SHEET NO.
64	82-2VB	ST. CLAIR	153	80
CONTRACT NO. 76867				
FED. ROAD DIST. NO. 7 ILLINOIS FED. AID PROJECT				