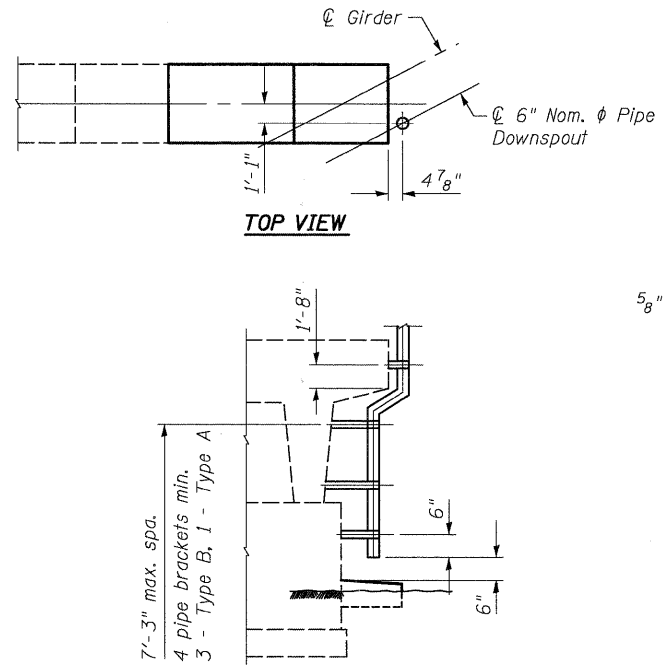
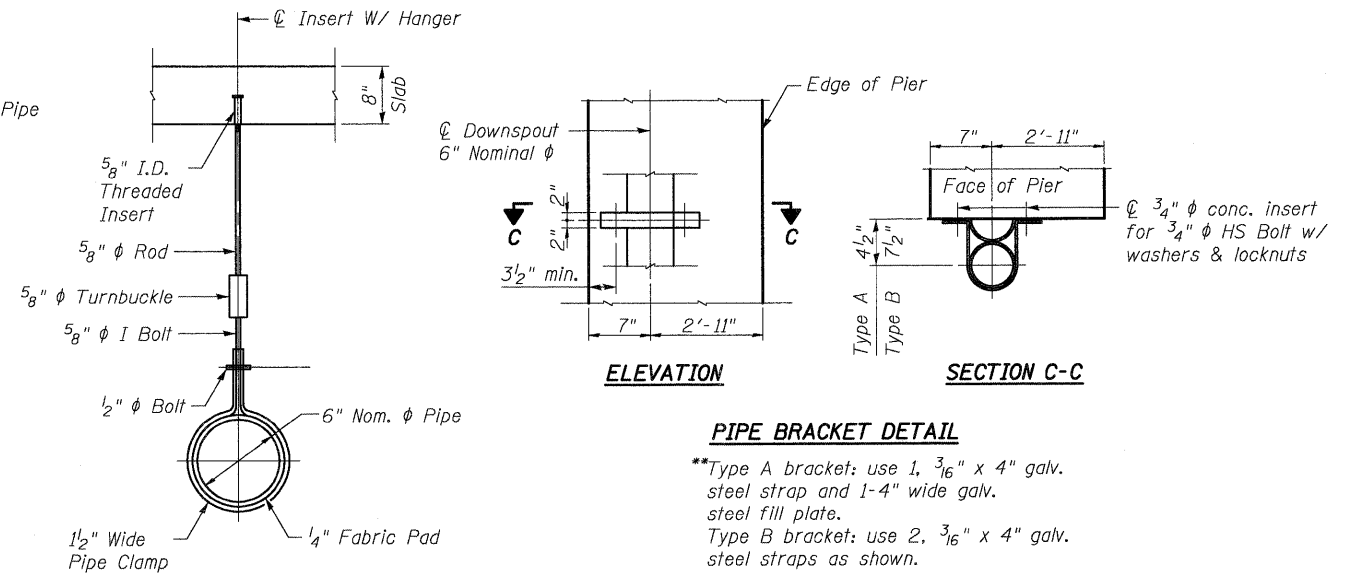


PIER 1 END VIEW
(Looking South)

* Max. Hanger Spacing = 10'-6"
or as recommended by
Pipe Manufacturer



TYP. PIER PARTIAL ELEVATION
(North End - Looking West)

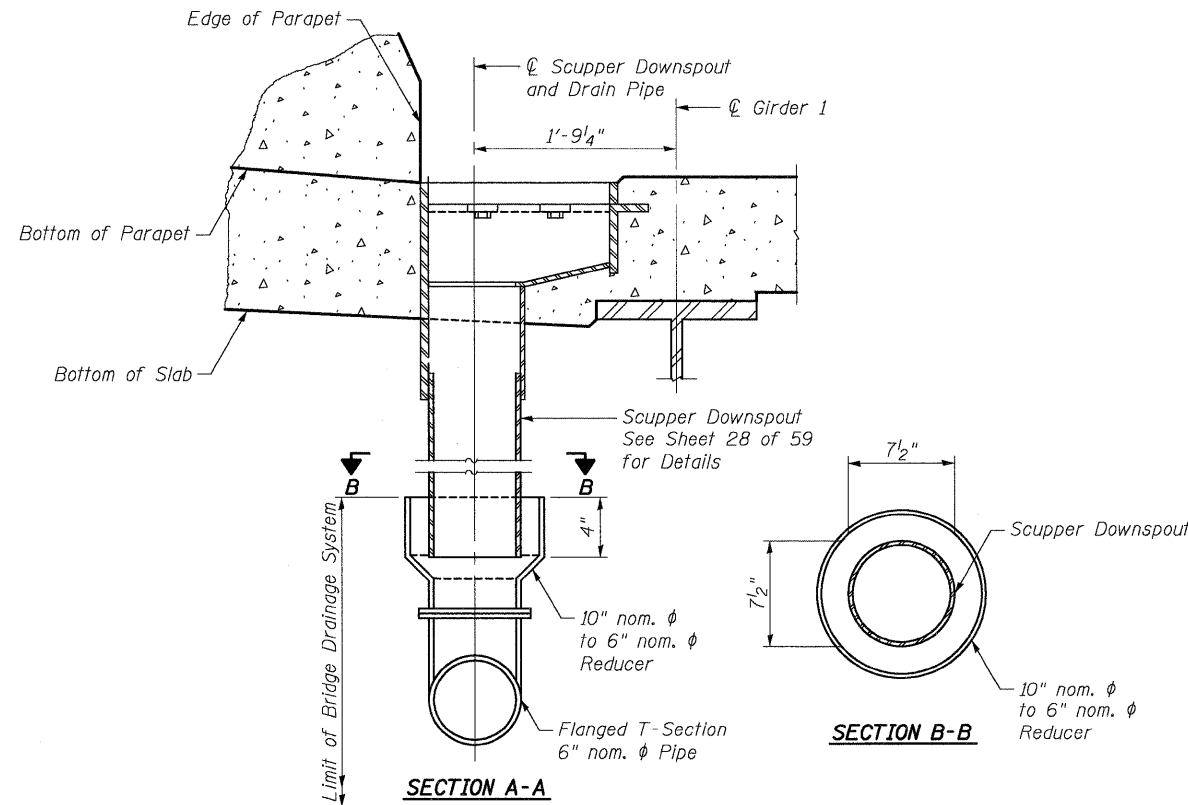


PIPE BRACKET DETAIL

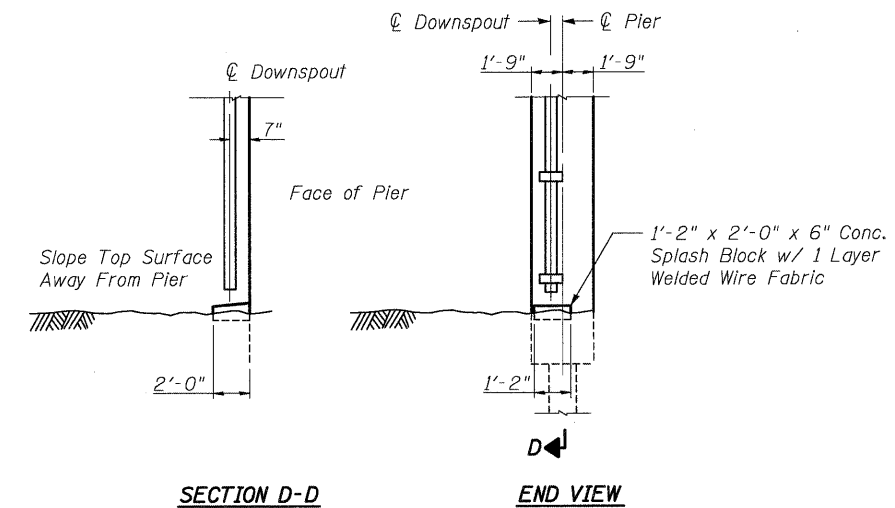
**Type A bracket: use 1, 3/16" x 4" galv. steel strap and 1-4" wide galv. steel fill plate.
Type B bracket: use 2, 3/16" x 4" galv. steel straps as shown.

HANGER DETAIL

Note: Bottom of pipe clamp shall not extend below bottom of steel beam.



CROSS SECTION



SECTION D-D

END VIEW

OUTLET AND SPLASH BLOCK DETAIL

Notes: Water from the drainage scupper shall be piped as shown to pier 1. See Special Provision for "Bridge Drainage System" for material requirements, installation guidelines, paint system requirements and basis of payment.

BRIDGE DRAINAGE SYSTEM
STRUCTURE NO. 082-0162 (E.B.)
STRUCTURE NO. 082-0163 (W.B.)

COOMBE-BLOXDORF P.C.
Engineers / Land Surveyors
Springfield, Illinois
Design Firm License No. 184-002703

PROJECT NO. 07004
SCALE
DATE 6/03/08
DRAWN BY TFG
CHECKED BY RM/MCB

SHEET NO. 29
59 SHEETS

F.A.I. RTE. 64	SECTION 82-2VB	COUNTY ST. CLAIR	TOTAL SHEETS 153	SHEET NO. 84
FED. ROAD DIST. NO. 7 ILLINOIS			CONTRACT NO. 76867	
FED. AID PROJECT				

USER NAME = CFC