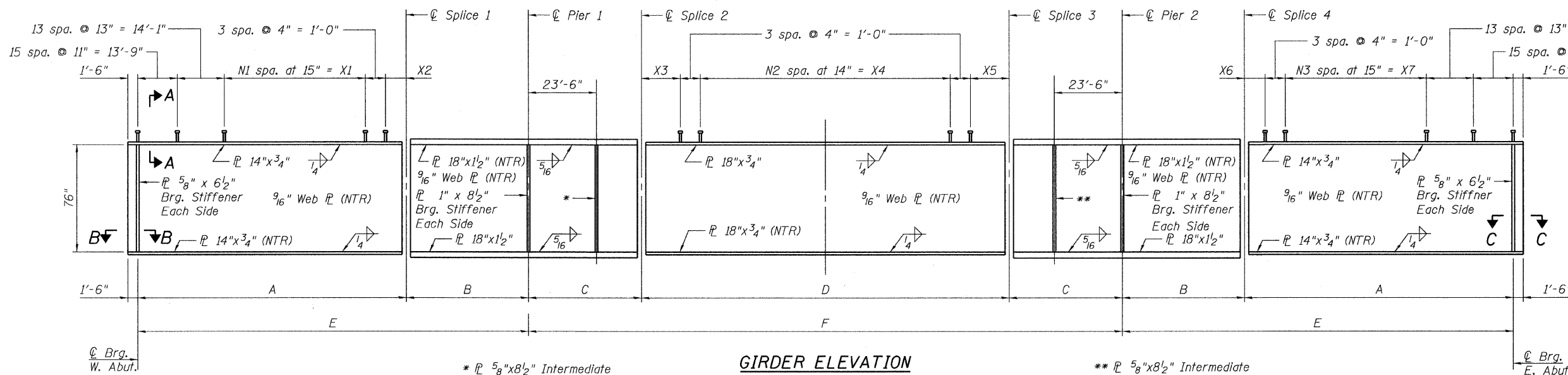


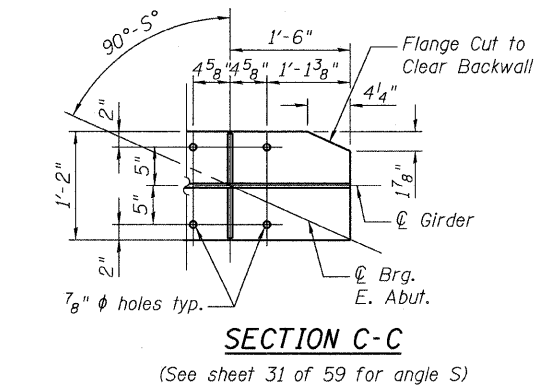
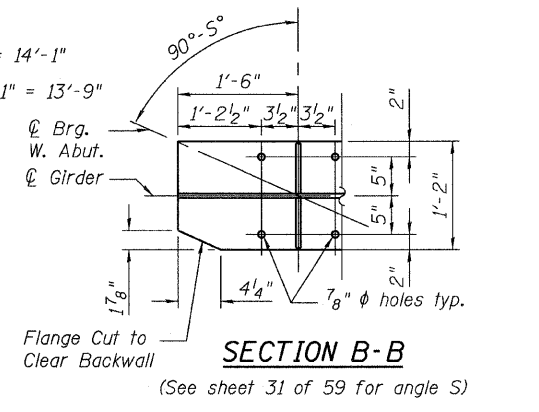
STATE OF ILLINOIS  
DEPARTMENT OF TRANSPORTATION



**GIRDER ELEVATION**  
(All flange, web and bearing stiffener plates shall be AASHTO M270 Grade 50)

\*  $\frac{5}{8}$ "x8 $\frac{1}{2}$ " Intermediate Transverse Stiffener. Inside Face of Girders 9 and 17.

\*\*  $\frac{5}{8}$ "x8 $\frac{1}{2}$ " Intermediate Transverse Stiffener. Inside Face of Girders 1 and 10.



**TOP OF WEB ELEVATIONS**  
(For Fabrication Only)

GIRDER	℄ Brg. W. Abut.	℄ Splice 1	℄ Pier 1	℄ Splice 2	℄ Splice 3	℄ Pier 2	℄ Splice 4	℄ Brg. E. Abut.
1	445.564	447.508	448.145	448.733	449.691	449.566	449.430	448.878
2	446.002	447.828	448.443	449.010	449.804	449.661	449.506	448.853
3	446.459	448.136	448.711	449.242	449.890	449.726	449.549	448.833
4	446.901	448.434	448.970	449.465	449.973	449.789	449.589	448.809
5	447.251	448.689	449.200	449.671	450.051	449.845	449.621	448.747
6	447.577	448.917	449.404	449.853	450.103	449.875	449.627	448.660
7	447.826	449.128	449.532	449.905	450.106	449.801	449.469	448.460
8	447.969	449.171	449.554	449.906	449.965	449.634	449.276	448.153
9	448.080	449.175	449.546	449.888	449.780	449.433	449.057	447.813
10	449.106	449.739	449.848	449.948	449.224	448.636	447.997	446.291
11	449.358	449.871	449.962	450.045	449.154	448.555	447.905	446.093
12	449.578	449.976	450.040	450.099	449.066	448.446	447.774	445.862
13	449.691	450.053	450.029	450.007	448.933	448.233	447.474	445.525
14	449.697	449.961	449.911	449.864	448.646	447.923	447.138	445.082
15	449.672	449.832	449.758	449.689	448.327	447.580	446.769	444.606
16	449.621	449.679	449.582	449.492	447.984	447.213	446.377	444.106
17	449.558	449.511	449.397	449.293	447.625	446.835	445.977	443.593

**GIRDER DIMENSIONS**

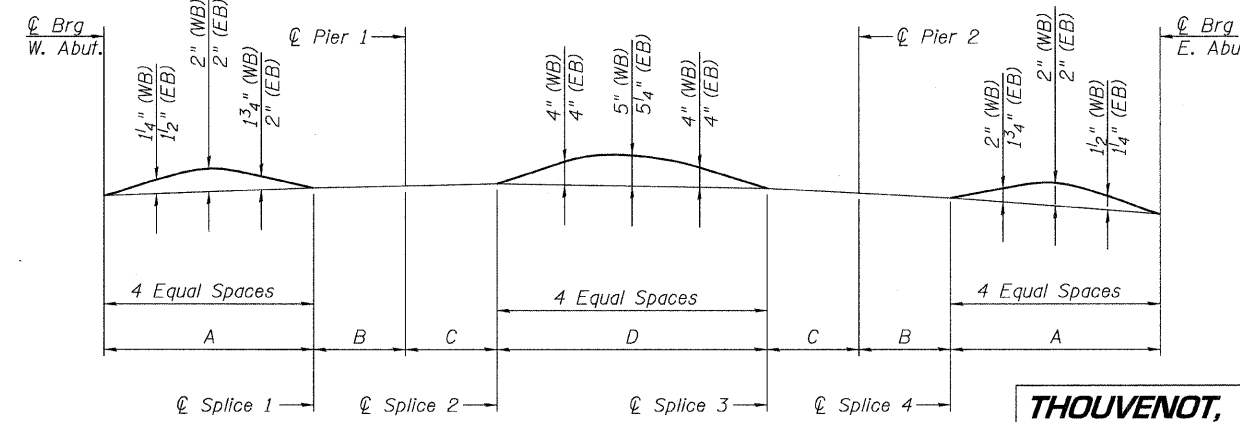
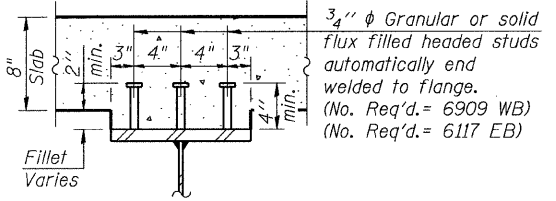
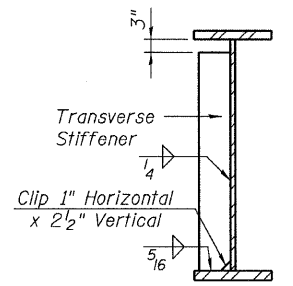
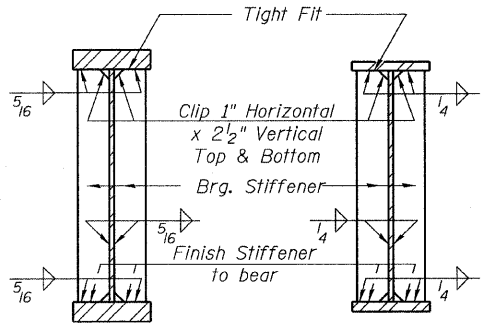
GIRDER	A	B	C	D	E	F
1 and 2	96'-7 $\frac{3}{4}$ "	42'-4 $\frac{11}{16}$ "	39'-0 $\frac{3}{16}$ "	131'-8 $\frac{1}{4}$ "	139'-0 $\frac{1}{16}$ "	209'-9 $\frac{1}{8}$ "
3	95'-3 $\frac{7}{8}$ "	41'-9 $\frac{1}{16}$ "	38'-6 $\frac{3}{8}$ "	129'-10 $\frac{3}{16}$ "	137'-1 $\frac{9}{16}$ "	206'-11 $\frac{1}{16}$ "
4 thru 17	94'-0"	41'-2 $\frac{3}{4}$ "	38'-0"	128'-1"	135'-2 $\frac{3}{4}$ "	204'-1"

**SHEAR CONNECTOR SCHEDULE**

GIRDER	N1	X1	X2	X3	N2	X4	X5	X6	N3	X7
1	53	66'-3"	1'-6 $\frac{3}{4}$ "	16'-3"	96	112'-0"	1'-5 $\frac{1}{4}$ "	17'-9 $\frac{3}{4}$ "	40	50'-0"
2	49	61'-3"	6'-6 $\frac{3}{4}$ "	11'-0"	99	115'-6"	3'-2 $\frac{1}{4}$ "	14'-0 $\frac{3}{4}$ "	43	53'-9"
3	45	56'-3"	10'-2 $\frac{7}{8}$ "	7'-9"	99	115'-6"	4'-7 $\frac{9}{16}$ "	13'-11 $\frac{1}{8}$ "	42	52'-6"
4	42	52'-6"	12'-8"	5'-3"	98	114'-4"	6'-6"	11'-5"	43	53'-9"
5	39	48'-9"	16'-5"	2'-3"	98	114'-4"	9'-6"	8'-11"	45	56'-3"
6	37	46'-3"	18'-11"	1'-5"	95	110'-10"	13'-10"	3'-11"	49	61'-3"
7	47	58'-9"	6'-5"	10'-10"	97	113'-2"	2'-1"	16'-5"	39	48'-9"
8	44	55'-0"	10'-2"	10'-10"	98	114'-4"	5'-3"	11'-5"	43	53'-9"
9	40	50'-0"	15'-2"	2'-3"	96	112'-0"	11'-10"	5'-2"	48	60'-0"
10	48	60'-0"	5'-2"	10'-10"	97	113'-2"	2'-1"	13'-11"	41	51'-3"
11	42	52'-6"	12'-8"	3'-3"	100	116'-8"	6'-2"	10'-2"	44	55'-0"
12	38	47'-6"	17'-8"	1'-5"	98	114'-4"	10'-4"	6'-5"	47	58'-9"
13	48	60'-0"	5'-2"	13'-10"	95	110'-10"	1'-5"	21'-5"	35	43'-9"
14	47	58'-9"	6'-5"	9'-2"	99	115'-6"	1'-5"	16'-5"	39	48'-9"
15	44	55'-0"	10'-2"	6'-0"	99	115'-6"	4'-7"	11'-5"	43	53'-9"
16	41	51'-3"	13'-11"	3'-0"	98	114'-4"	8'-9"	7'-8"	46	57'-6"
17	38	47'-6"	17'-8"	1'-5"	95	110'-10"	13'-10"	3'-11"	49	61'-3"

Note:  
Load carrying components designated "NTR" shall conform to the Supplemental Requirements for Notch Toughness, Zone 2.

**GIRDER DETAILS**  
STRUCTURE NO. 082-0162 (E.B.)  
STRUCTURE NO. 082-0163 (W.B.)



DESIGNED	BWP
CHECKED	ALN/MJJ
DRAWN	BWP
CHECKED	MJJ/ALN

**THOUVENOT, WADE & MOERCHEN, INC.**  
CORPORATE OFFICE  
4940 Old Collinsville Road  
Swansea, Illinois 62226  
Tel: 618.624.4488  
Fax: 618.624.6688  
SWANSEA • WATERLOO • EDWARDSVILLE • CARBONDALE • ST. CHARLES

SHEET NO. 32 59 SHEETS	F.A.I. RTE. 64	SECTION 82-2VB-2	COUNTY ST. CLAIR	TOTAL SHEETS 153	SHEET NO. 87
	CONTRACT NO. 76867				
FED. ROAD DIST. NO. 7 ILLINOIS FED. AID PROJECT					

Plotted by: mschwartz on 6/6/2009 3:29:16 PM