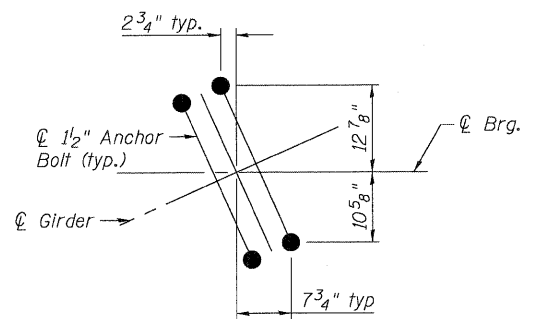
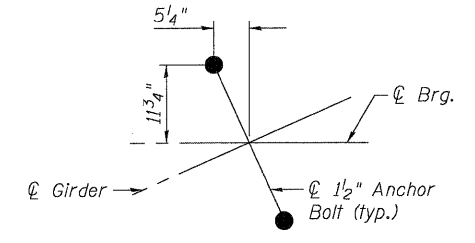


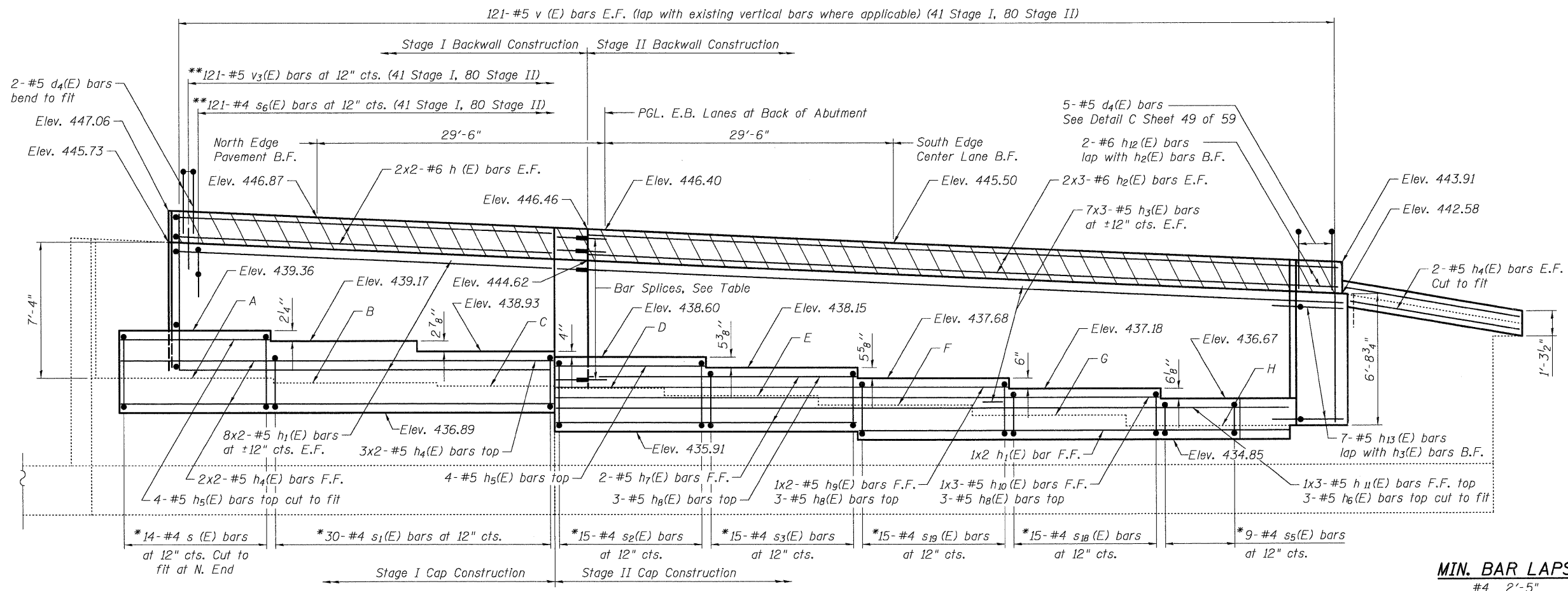
PLAN



DETAIL A
(typ Girders 10 and 17)



DETAIL B
(typ Girders 11 thru 16)



ELEVATION
(Looking East)

TABLE OF EXISTING SEAT ELEVATIONS

A	438.40
B	438.14
C	437.89
D	437.76
E	437.38
F	436.91
G	436.38
H	435.85

TABLE OF BAR SPLICERS

No.	Size	Bars Spliced
4	#6	Stands alone
14	#5	Stands alone
49	#5	Approach Pmnt.

Note: See sheet 49 of 59 for additional details, notes and Bill of Material

MIN. BAR LAPS

#4	2'-5"
#5	3'-0"
#6	3'-7"

EAST ABUTMENT EB
STRUCTURE NO. 082-0162 (EB)
STRUCTURE NO. 082-0163 (WB)

* Epoxy grout #4 s(E) thru s3(E), s5(E), s18(E) and s19(E) bars into 3/4" φ x 9" drilled holes. The center of the holes shall be drilled a minimum of 4" from the edge of existing concrete. See Section 584 of the Standard Specifications.

** See Section thru Abutment Sheet 49 of 59

COOMBE-BLOXDORF P.C. Engineers / Land Surveyors Springfield, Illinois Design Firm License No. 184-002703	PROJECT NO. 07004 SCALE DATE 1/08/09 DRAWN BY TFG CHECKED BY RM/MCB	SHEET NO. 48 59 SHEETS	F.A.I. RTE. 64 SECTION 82-2VB COUNTY ST. CLAIR TOTAL SHEETS 153 SHEET NO. 103	CONTRACT NO. 76867 FED. ROAD DIST. NO. 7 ILLINOIS FED. AID PROJECT
--	---	---------------------------	---	---