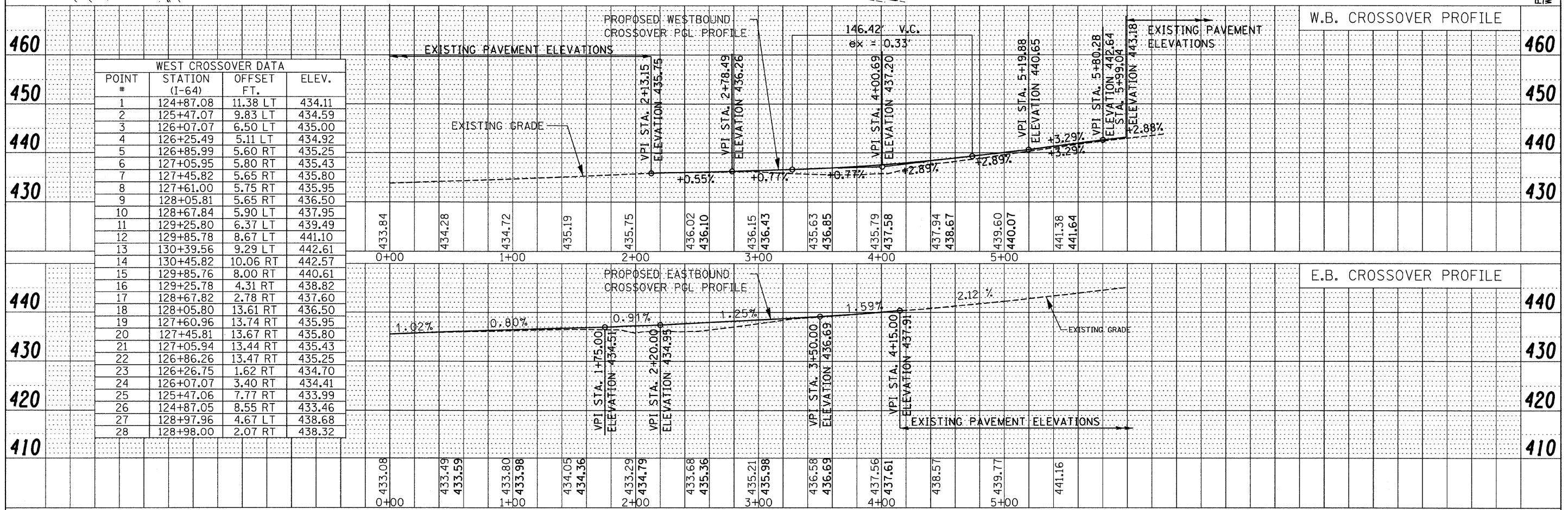
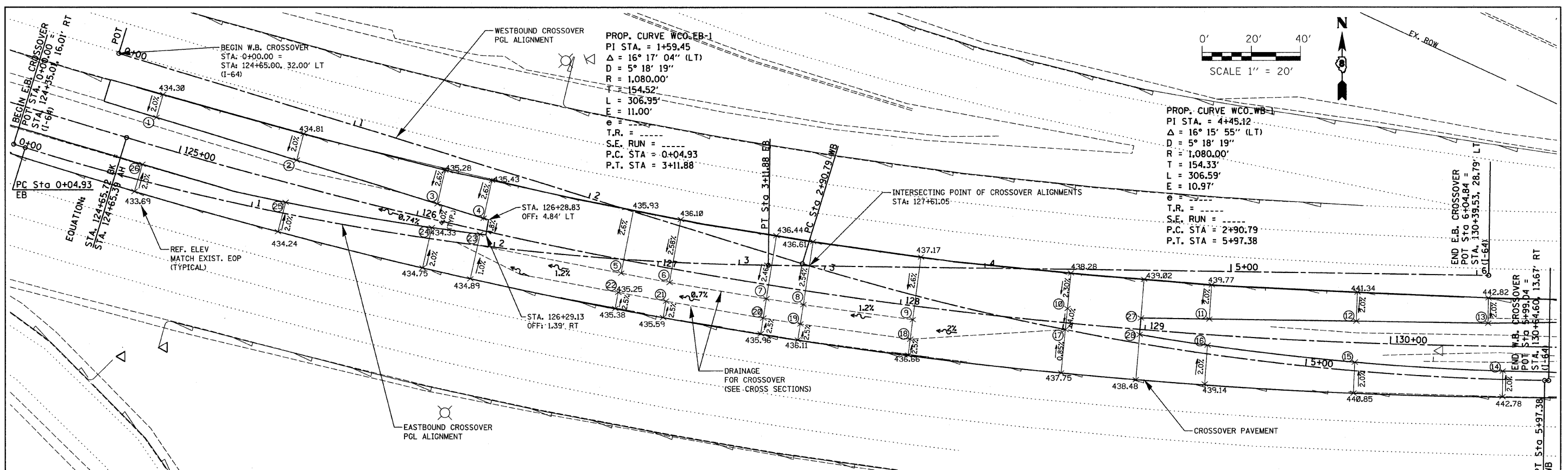


PROP. CURVE WCO-EB-1  
 PI STA. = 1+59.45  
 $\Delta = 16^\circ 17' 04''$  (LT)  
 $D = 5^\circ 18' 19''$   
 $R = 1,080.00'$   
 $T = 154.52'$   
 $L = 306.95'$   
 $E = 11.00'$   
 $\theta =$   
 $T.R. =$   
 $S.E. RUN =$   
 $P.C. STA = 0+04.93$   
 $P.T. STA = 3+11.88$

PROP. CURVE WCO-WB-1  
 PI STA. = 4+45.12  
 $\Delta = 16^\circ 15' 55''$  (LT)  
 $D = 5^\circ 18' 19''$   
 $R = 1,080.00'$   
 $T = 154.33'$   
 $L = 306.59'$   
 $E = 10.97'$   
 $\theta =$   
 $T.R. =$   
 $S.E. RUN =$   
 $P.C. STA = 2+90.79$   
 $P.T. STA = 5+97.38$

PLAN  
 SURVEYED BY: \_\_\_\_\_ DATE: \_\_\_\_\_  
 CHECKED BY: \_\_\_\_\_  
 NOTE BOOK NO. \_\_\_\_\_  
 RT. OF WAY CHECKED BY: \_\_\_\_\_  
 PAID FILE NAME: \_\_\_\_\_

PROFILE  
 SURVEYED BY: \_\_\_\_\_ DATE: \_\_\_\_\_  
 CHECKED BY: \_\_\_\_\_  
 NOTE BOOK NO. \_\_\_\_\_  
 S.M. NOTED BY: \_\_\_\_\_  
 STRUCTURE NOTATIONS CIPRD: \_\_\_\_\_



WEST CROSSOVER DATA			
POINT #	STATION (I-64)	OFFSET FT.	ELEV.
1	124+87.08	11.38 LT	434.11
2	125+47.07	9.83 LT	434.59
3	126+07.07	6.50 LT	435.00
4	126+25.49	5.11 LT	434.92
5	126+85.99	5.60 RT	435.25
6	127+05.95	5.80 RT	435.43
7	127+45.82	5.65 RT	435.80
8	127+61.00	5.75 RT	435.95
9	128+05.81	5.65 RT	436.50
10	128+67.84	5.90 LT	437.95
11	129+25.80	6.37 LT	439.49
12	129+85.78	8.67 LT	441.10
13	130+39.56	9.29 LT	442.61
14	130+45.82	10.06 RT	442.57
15	129+85.76	8.00 RT	440.61
16	129+25.78	4.31 RT	438.82
17	128+67.82	2.78 RT	437.60
18	128+05.80	13.61 RT	436.50
19	127+60.96	13.74 RT	435.95
20	127+45.81	13.67 RT	435.80
21	127+05.94	13.44 RT	435.43
22	126+86.26	13.47 RT	435.25
23	126+26.75	1.62 RT	434.70
24	126+07.07	3.40 RT	434.41
25	125+47.06	7.77 RT	433.99
26	124+87.05	8.55 RT	433.46
27	128+97.96	4.67 LT	438.68
28	128+98.00	2.07 RT	438.32