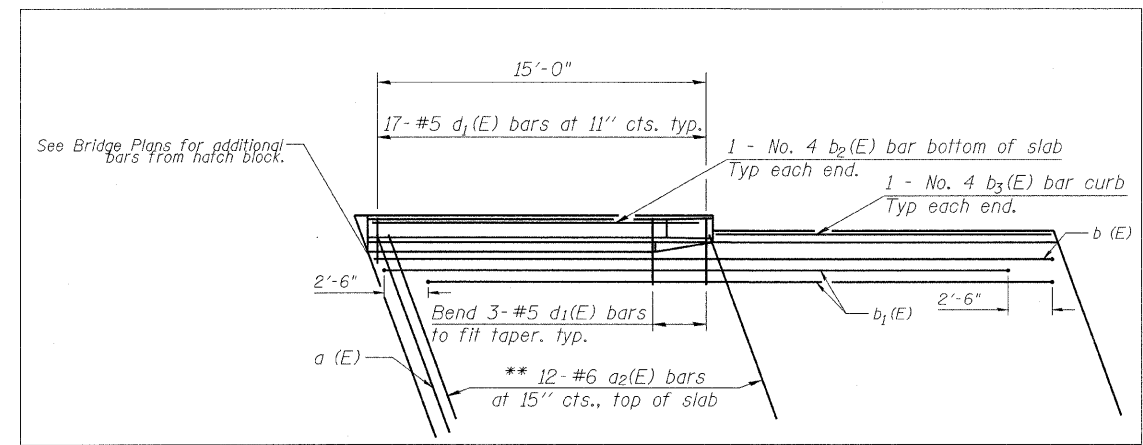
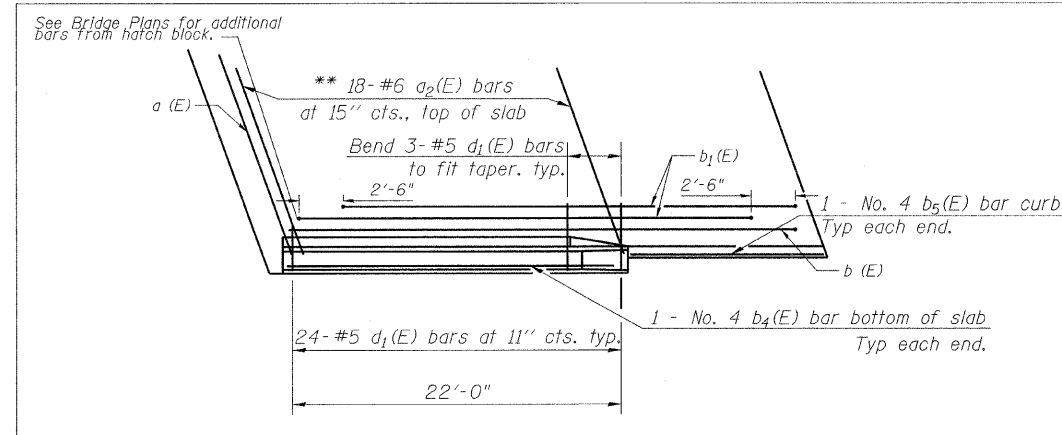


PLAN



INSET A



INSET B

Notes:
 See Sheet 5 of 5 for Sections B-B, C-C, D-D, and E-E.
 See Sheet 19 of 59 of Bridge Plans for Top of Slab Elevations.
 See Sheet 41 of 59 of Bridge Plans for Wingwall Removal.
 * Tilt #9 b1(E) bars as required to maintain clearance.
 ** Alternate with a(E) bars, typ. each parapet.
 *** Alternate with a(E) bars, typ. each curb.

FILE NAME =	USER NAME = mschwier.john	DESIGNED - DRB	REVISED -
P:\060601B\dgn\CADD Sheets\0876876-sht-	Details.approach pvmt (special)-004.dgn	DRAWN - DRB	REVISED -
PLOT SCALE = 4.7222' / IN.	CHECKED - SJK	REVISOR -	REVISED -
PLOT DATE = 8/6/2009	DATE -	REVISOR -	REVISED -

**STATE OF ILLINOIS
 DEPARTMENT OF TRANSPORTATION**

**MISCELLANEOUS DETAILS - BRIDGE APPROACH PAVEMENT (SPECIAL)
 EASTBOUND EAST SIDE - STRUCTURE NO. 082-0162**

SCALE: SHEET NO. 4 OF 5 SHEETS STA. TO STA.

F.A.I. RTE. 64	SECTION 82-2VB-2	COUNTY ST. CLAIR	TOTAL SHEETS 153	SHEET NO. 124
CONTRACT NO. 76867				
FED. ROAD DIST. NO. 8 ILLINOIS FED. AID PROJECT				