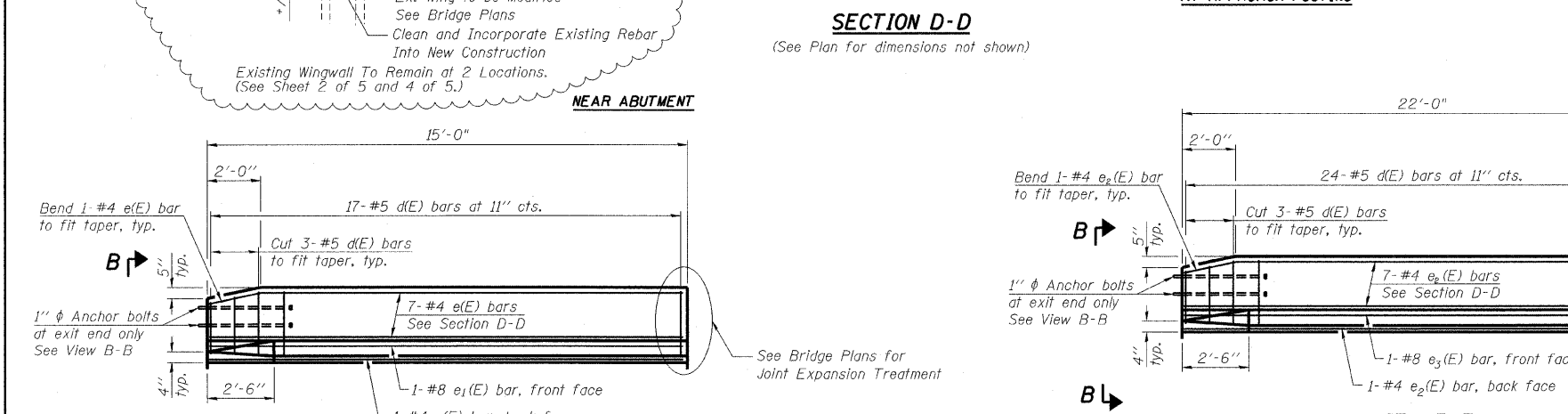
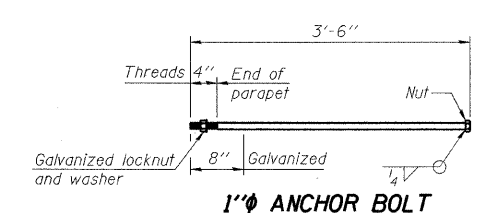
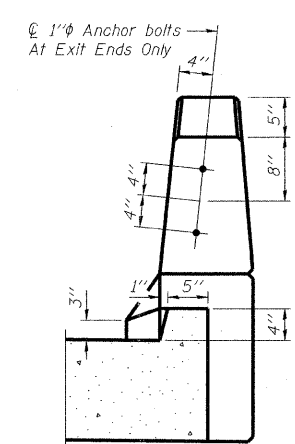
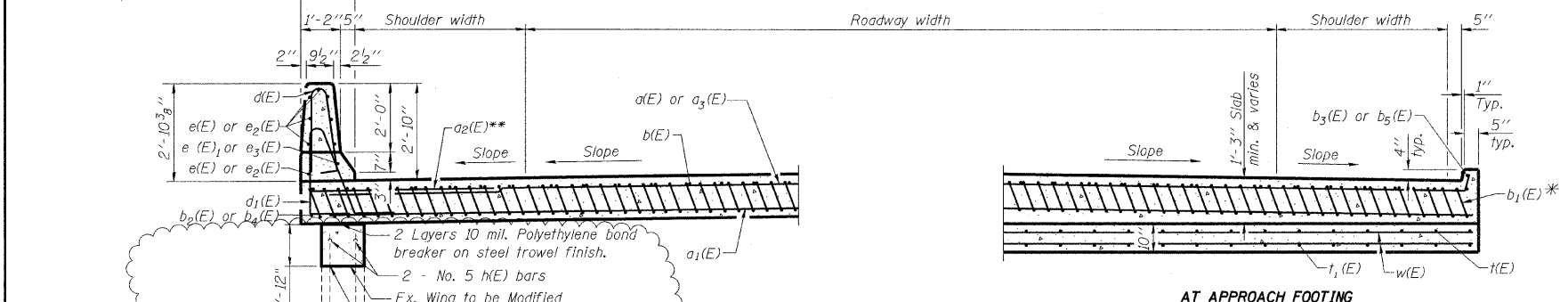
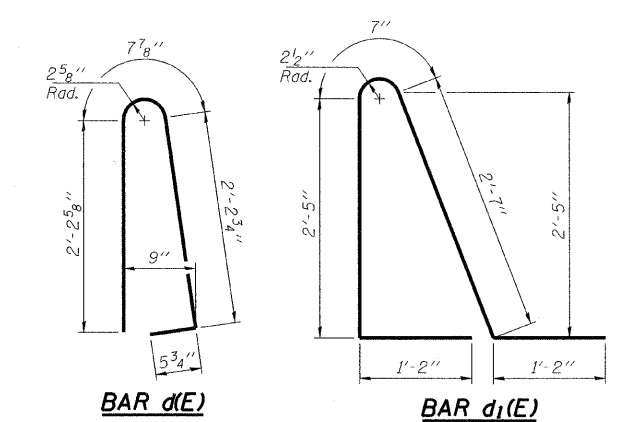
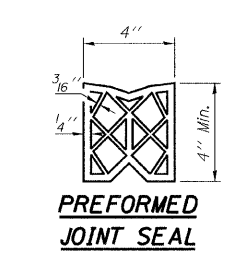


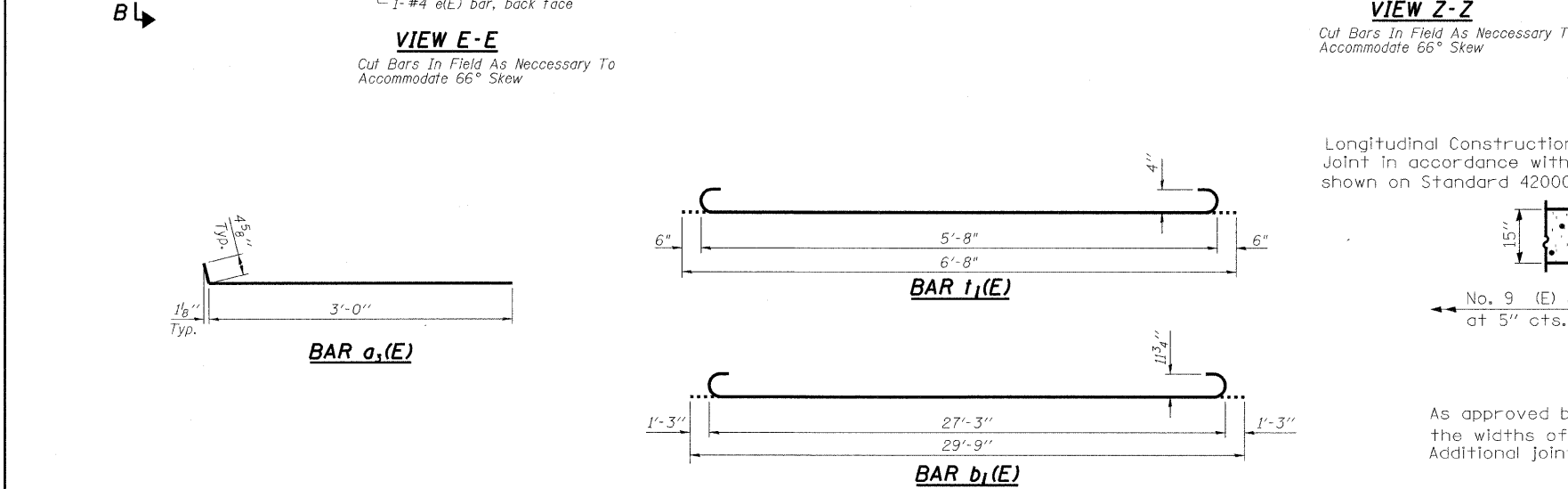
\* Tilt #9 b<sub>1</sub>(E) bars as required to maintain clearance.  
 \*\* Alternate with a(E) bars, typ. each parapet.  
 \*\*\* Stagger b<sub>1</sub>(E) bars as shown on plan full width.

**Lap Lengths**  
 No. 4 1'-8"  
 No. 5 2'-0"

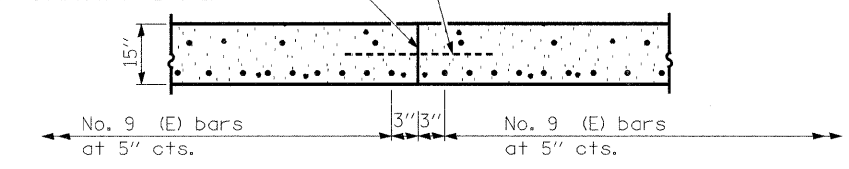
Notes:  
 The approach footing maximum applied service bearing pressure (Q<sub>max</sub>) = 2.0 ksf.  
 a(E), a<sub>1</sub>(E), and w(E) bar spacings measured perpendicular to  $\bar{C}$  Rdwy.  
 See Standards 420001 & 421001 for details not shown.



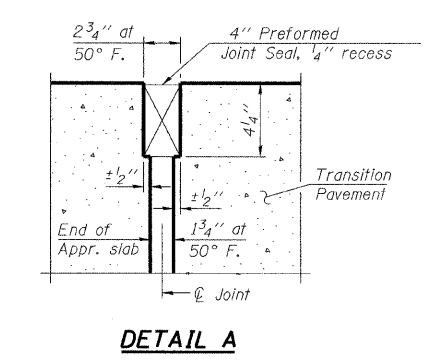
**DESIGN STRESSES**  
 f<sub>y</sub> = 60,000 psi  
 f'<sub>c</sub> = 3,500 psi  
 n = 8.5



Longitudinal Construction Joint in accordance with details shown on Standard 420001.



As approved by the Engineer, the Contractor may elect to reduce the widths of pour by additional use of this joint. Additional joints shall be located at the edge of a traffic lane.



FILE NAME =	USER NAME = mschwier-john	DESIGNED - DRB	REVISED -	<b>STATE OF ILLINOIS DEPARTMENT OF TRANSPORTATION</b>	<b>MISCELLANEOUS DETAILS - BRIDGE APPROACH PAVEMENT DETAILS</b>	F.A.I. RTE.	SECTION	COUNTY	TOTAL SHEETS	SHEET NO.	
P:\060601B\ogn\CADD Sheets\0876876-shd	details.approach pvmt (special)-005.dgn	DRAWN - DRB	REVISED -			64	82-2VB-2	ST. CLAIR	153	125	
	PLOT SCALE = 4.7222' / IN.	CHECKED - SJK	REVISED -			CONTRACT NO. 76867					
	PLOT DATE = 8/6/2009	DATE -	REVISED -			FED. ROAD DIST. NO. 8 ILLINOIS FED. AID PROJECT					
					SCALE:	SHEET NO. 5 OF 5 SHEETS		STA.	TO STA.		