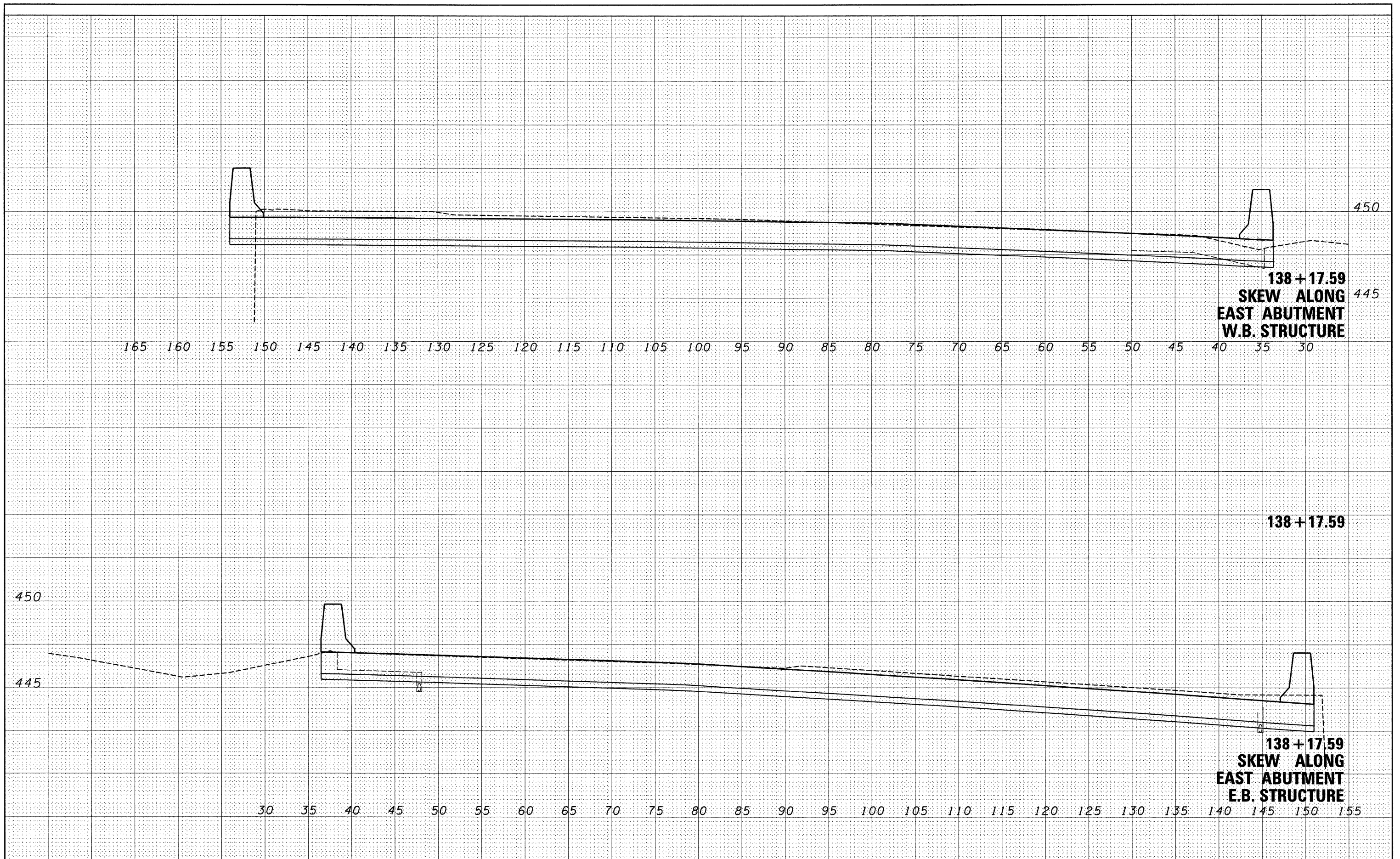


FINAL	DATE
SURVEYED	BY
PLOTTED	
NOTE BOOK	
AREAS CHECKED	
NO.	

ORIGINAL	DATE
SURVEY	BY
PLOTTED	
NOTE BOOK	
AREAS CHECKED	
NO.	



FILE NAME = P:\062601B\dgn\CADD Sheets\0876876-sht-xssht.dgn

USER NAME = jstein  
DESIGNED JWS  
DRAWN JWS  
CHECKED SJK  
DATE 8/6/2009

REVISED -  
REVISED -  
REVISED -  
REVISED -

STATE OF ILLINOIS  
DEPARTMENT OF TRANSPORTATION

CROSS SECTIONS

SCALE: 1" = 5' SHEET NO. 11 OF 23 SHEETS STA. 138+17.59 TO STA. 138+17.59

F.A.I. RTE.	SECTION	COUNTY	TOTAL SHEETS	SHEET NO.
64	82-2VB-2	ST. CLAIR	153	141
CONTRACT NO. 76867				
FED. ROAD DIST. NO. ILLINOIS FED. AID PROJECT				