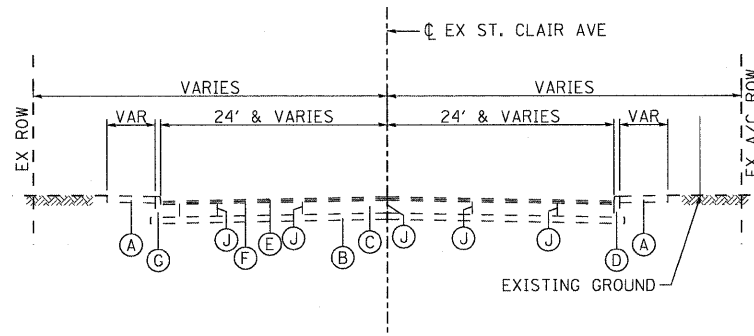


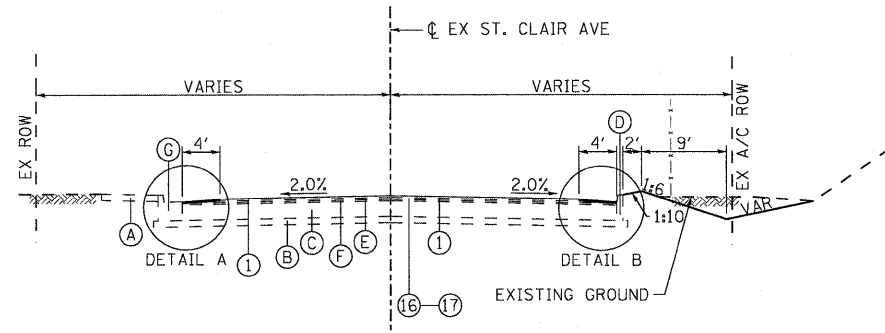
EXISTING ST. CLAIR AVENUE

STA 19+71.85 TO STA 21+10.33
 • RIGHT SIDEWALK BEGINS AT STA 20+79.54



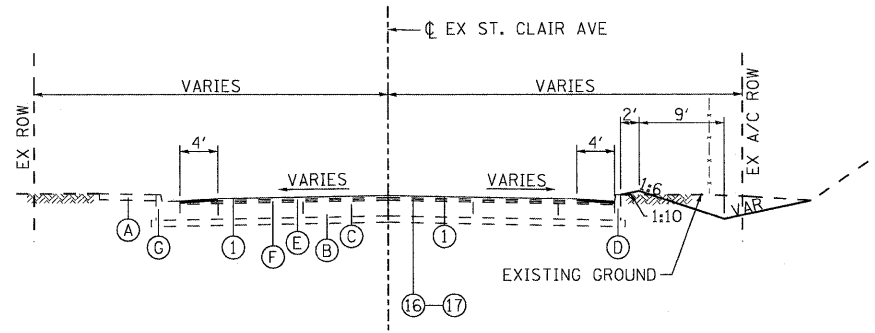
EXISTING ST. CLAIR AVENUE

STA 21+10.33 TO STA 23+76.03



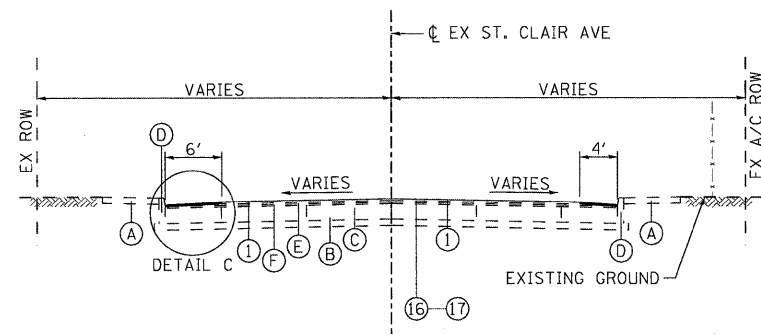
PROPOSED ST. CLAIR AVENUE

STA 20+30.00 TO STA 21+10.33



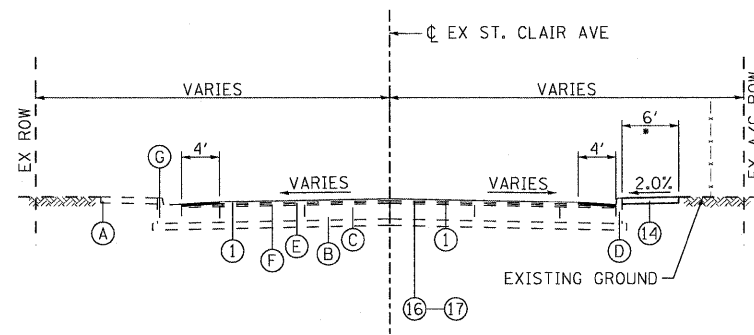
PROPOSED ST. CLAIR AVENUE

STA 21+10.33 TO STA 21+60.00



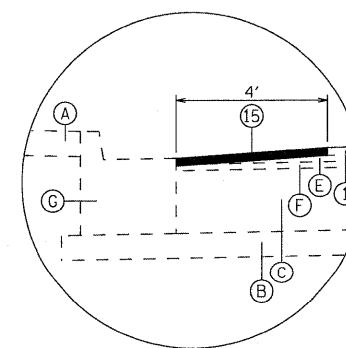
PROPOSED ST. CLAIR AVENUE

STA 21+60.00 TO STA 22+32.77

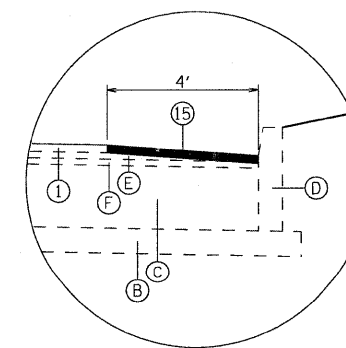


PROPOSED ST. CLAIR AVENUE

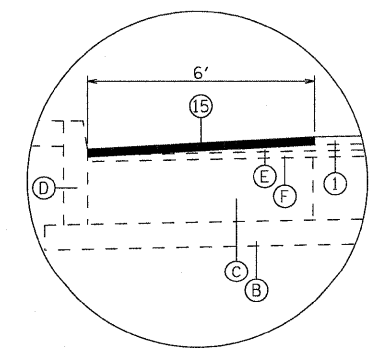
STA 22+32.77 TO STA 23+76.03
 • RIGHT SIDEWALK ENDS AT STA 23+76.02
 • LEFT SIDEWALK ENDS STA 23+26.60



DETAIL A



DETAIL B



DETAIL C

⑮ HMA SURFACE REMOVAL - VARIABLE DEPTH SHALL BE 1 1/4" AT EDGE OF PAVEMENT AND 0" AT THE DIMENSION SHOWN IN DETAIL A, B AND C.

EXISTING LEGEND:

- Ⓐ PORTLAND CEMENT CONCRETE SIDEWALK - 4"±
- Ⓑ SUB-BASE GRANULAR MATERIAL, TYPE A - 4"±
- Ⓒ PORTLAND CEMENT CONCRETE PAVEMENT - 10"±
- Ⓓ CONCRETE CURB
- Ⓔ HMA SURFACE COURSE - 1"±
- Ⓕ HMA BINDER COURSE - 1"±
- Ⓖ COMBINATION CURB AND GUTTER TYPE B-6.24
- Ⓗ CONCRETE MEDIAN SURFACE
- Ⓘ COARSE AGGREGATE
- ⓵ PORTLAND CEMENT CONCRETE JOINTS
- Ⓚ COMBINATION CURB AND GUTTER TYPE B-6.12

PROPOSED LEGEND:

- ① HMA SURFACE COURSE, MIX "D" N70 - 1 1/4"
- ② HMA LEVELING BINDER, (MACHINE METHOD) N70 - 1" MINIMUM AND VARIES
- ③ COMBINATION CONCRETE CURB AND GUTTER TYPE B-6.24
- ④ CONCRETE CURB TYPE B-6.12
- ⑤ AGGREGATE BASE COURSE, TYPE A - 12"
- ⑥ PORTLAND CEMENT CONCRETE BASE COURSE - 10"
- ⑦ #6 TIE BARS, 30" LONG AT 30" C-C
(INCLUDED IN BID PRICE FOR VARIOUS PCC ITEMS)
- ⑧ #6 TIE BARS, 30" LONG AT 24" C-C
(INCLUDED IN BID PRICE FOR VARIOUS PCC ITEMS)
- ⑨ COARSE AGGREGATE
- ⑩ CONCRETE MEDIAN SURFACE - 4"
- ⑪ LONGITUDINAL JOINT
- ⑫ PORTLAND CEMENT CONCRETE PAVEMENT - 10" (JOINTED)
- ⑬ SEEDING AND MULCHING (SEE NOTE 1)
- ⑭ PORTLAND CEMENT CONCRETE SIDEWALK - 4"
- ⑮ HMA SURFACE REMOVAL - VARIABLE DEPTH
- ⑯ BITUMINOUS MATERIALS (PRIME COAT)
- ⑰ AGGREGATE (PRIME COAT)

NOTES:

1. SEEDING, CLASS 1B AND MULCH, METHOD 2 SHALL BE USED ON ALL SIDE SLOPES.
2. FOR LIMITS OF CHAIN LINK FENCE, SEE PLAN AND PROFILE SHEETS. LOCATE FENCE POSTS TO AVOID ALL EXISTING UTILITIES.
3. SEE LANDSCAPING PLAN SHEETS FOR MEDIAN PLANTING DETAILS FOR STA. 202+88.20 TO STA. 204+80.77.

STATE OF ILLINOIS
 DEPARTMENT OF TRANSPORTATION

TYPICAL SECTIONS
 ST. CLAIR AVENUE

F.A.U. RTE.	SECTION	COUNTY	TOTAL SHEETS	SHEET NO.
•	82-1-10N	ST. CLAIR	68	10
• 9166/9180		CONTRACT NO.	76C38	
FED. ROAD DIST. NO.	ILLINOIS FED. AID PROJECT			

SCALE: NONE SHEET NO. 4 OF 4 SHEETS STA. ----- TO STA. -----

FILE NAME = DBTRI-76C38-sht-typical01-04.dgn	USER NAME = jdf	DESIGNED - LDC	REVISED -
MODEL NAME = DBTRI-76C38-SHT-TYPICAL-04		DRAWN - JDF	REVISED -
PLOT SCALE = 1:10		CHECKED - GEB	REVISED -
PLOT DATE = 8/13/2009		DATE = 08/14/09	REVISED -