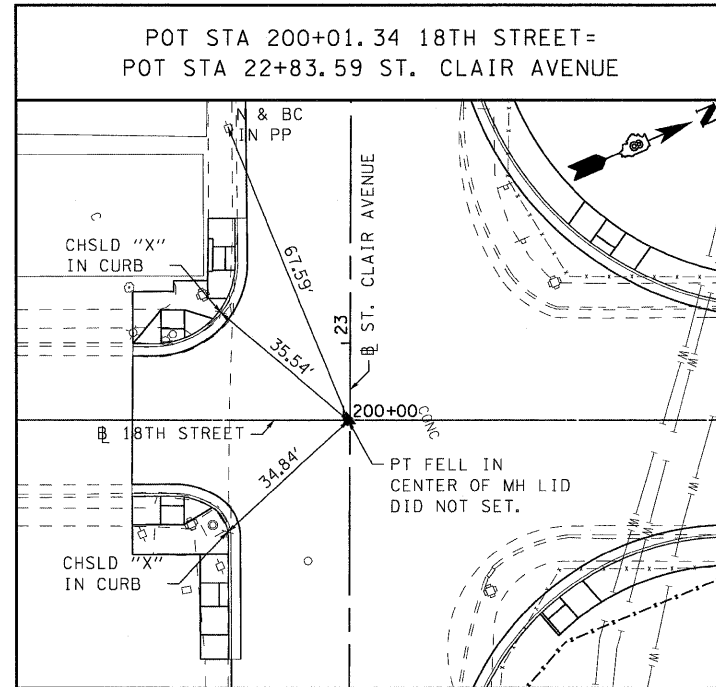
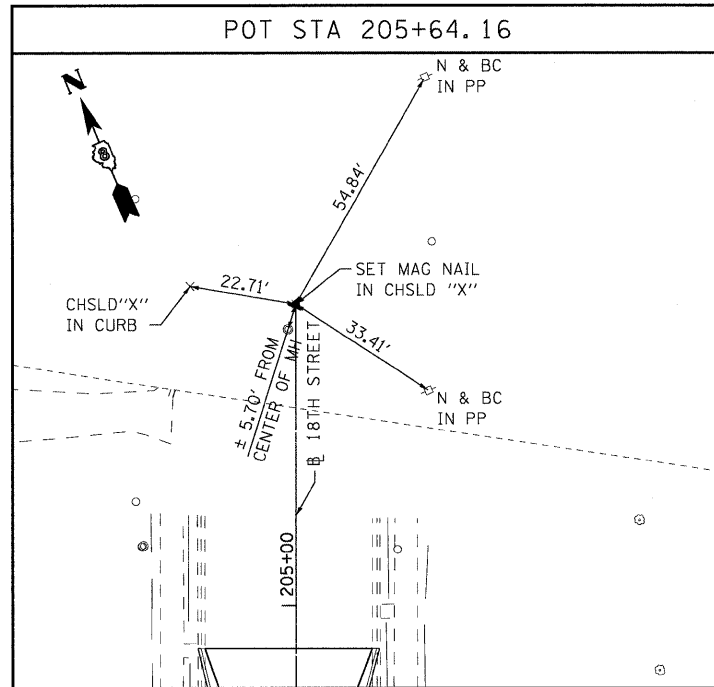
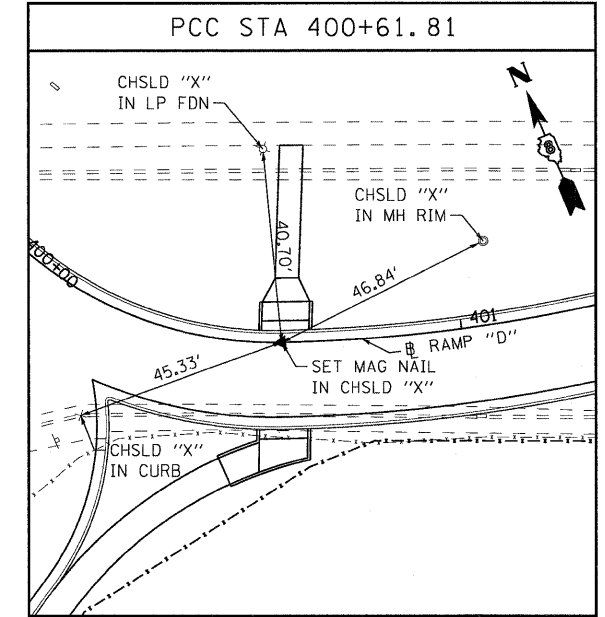
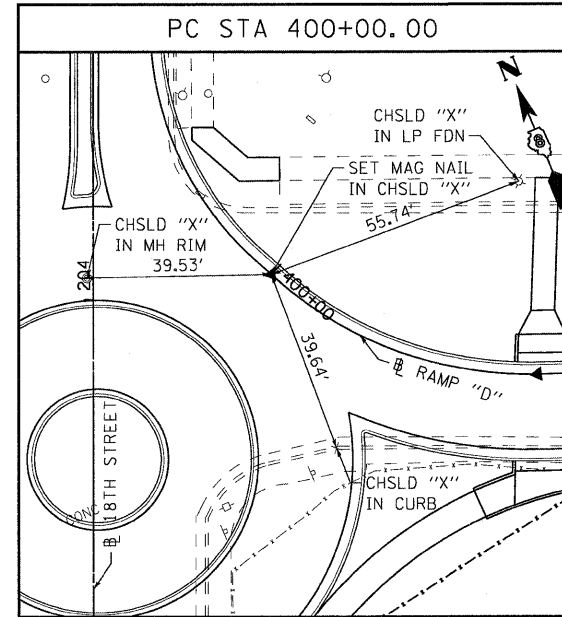


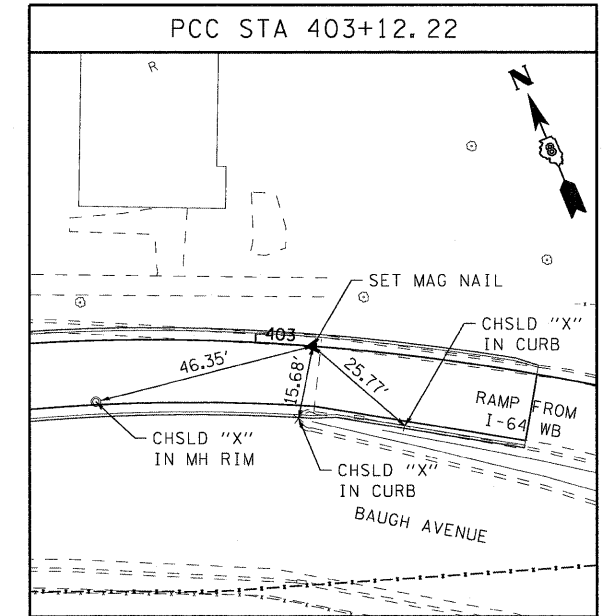
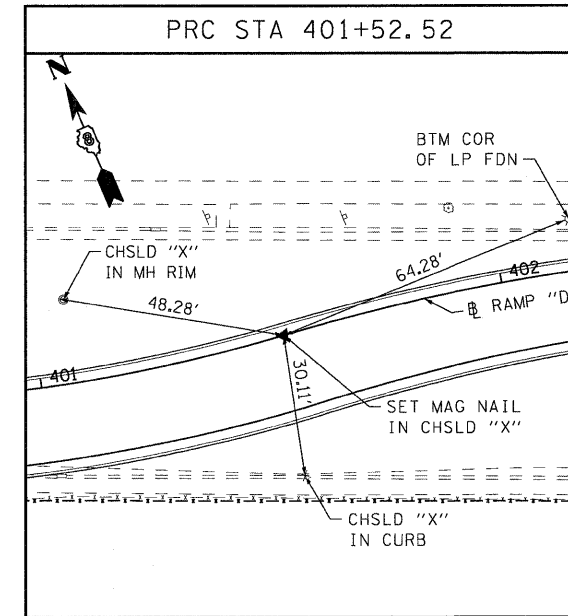
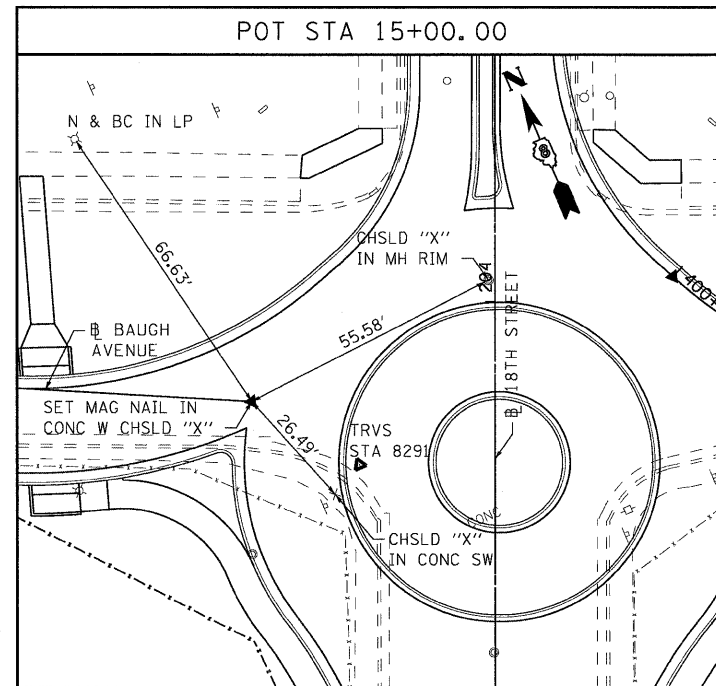
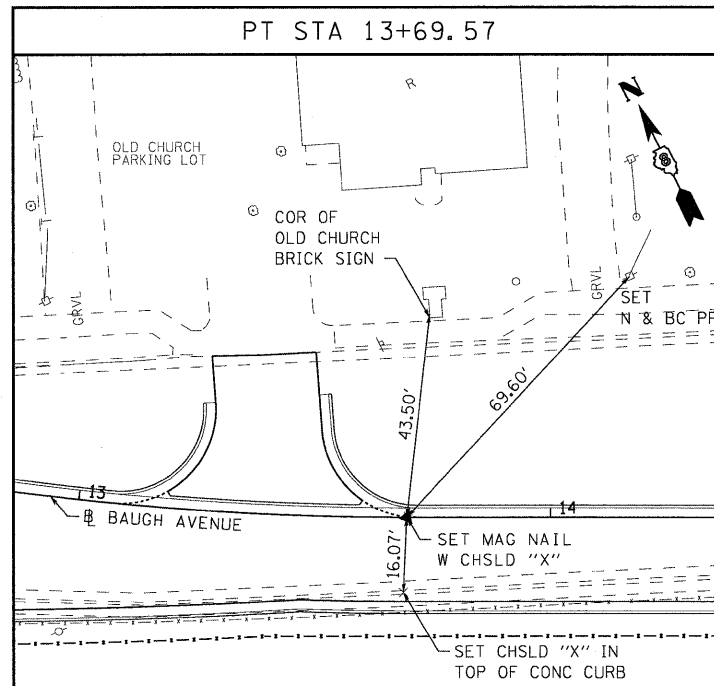
18TH STREET CENTERLINE



RAMP "D"



BAUGH AVENUE BASELINE



STATE OF ILLINOIS
DEPARTMENT OF TRANSPORTATION

ALIGNMENT, TIES, AND BENCHMARKS

| F.A.U. RTE. | SECTION | COUNTY | TOTAL SHEETS | SHEET NO. |
|---|-----------|--------------------|--------------|-----------|
| • | 82-1-10N | ST. CLAIR | 68 | 18 |
| • | 9166/9180 | CONTRACT NO. 76C38 | | |
| FED. ROAD DIST. NO. [ILLINOIS] FED. AID PROJECT | | | | |

SCALE: 1"=20' SHEET NO. 3 OF 3 SHEETS STA. ----- TO STA. -----

| | | | |
|--|-----------------|----------------|-----------|
| FILE NAME = DBTRI-76C38-sht-aligntiebm-01-03.dgn | USER NAME = jdf | DESIGNED - LOC | REVISED - |
| MODEL NAME = DBTRI-76C38-sht-aligntiebm-03 | DRAWN - JDF | CHECKED - GEB | REVISED - |
| PLOT SCALE = 1:20 | DATE = 08/14/09 | REVISOR - | REVISOR - |
| PLOT DATE = 8/13/2009 | | | |

8/13/2009 10:37:35 AM P:\08-0030 CTE TRI LEVEL 900 CAD\901_DRAWINGS\04 CONTRACT SHEET\CVL\GENERAL\08TRI-76C38-SHT-ALIGN-TIEBM-01-03.DGN