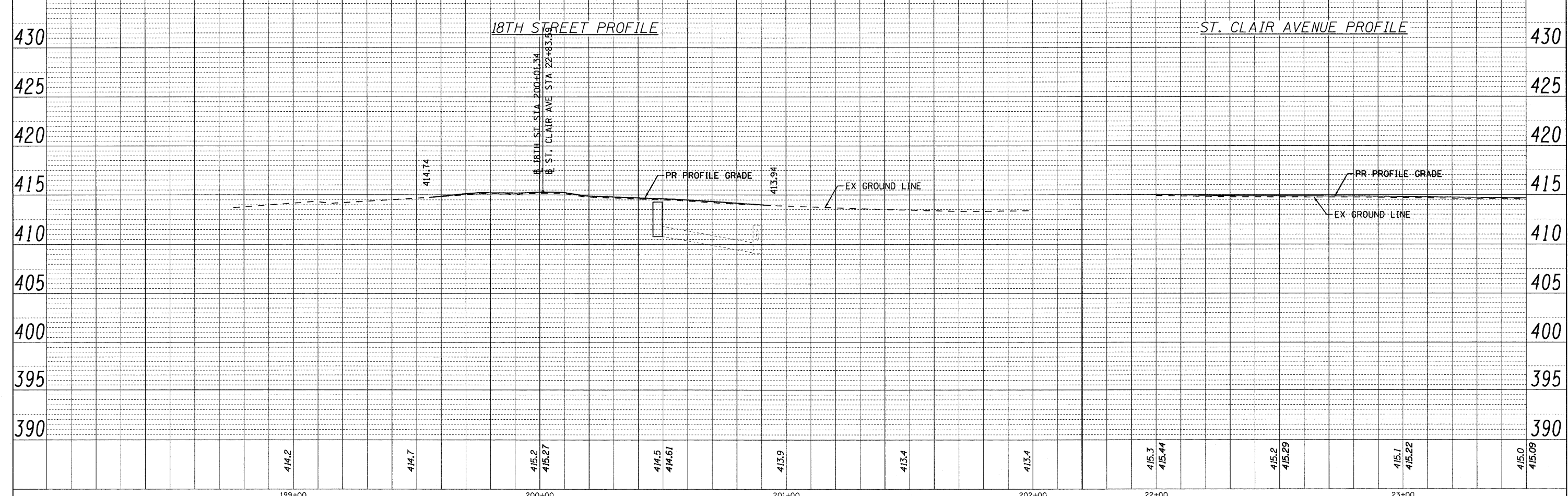
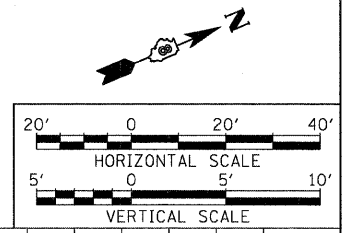
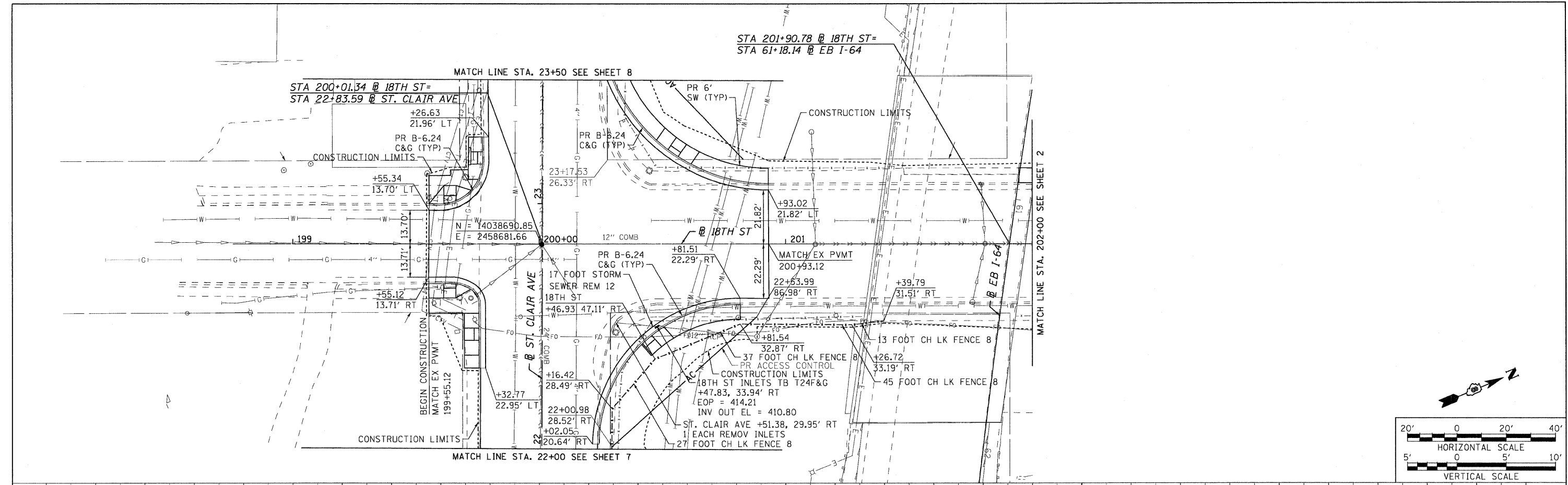


PLAN	SURVEYED	DATE
	PLOTTED	
	NOTED	
	BY	
	NO.	
	DATE	

PROFILE	SURVEYED	DATE
	PLOTTED	
	NOTED	
	BY	
	NO.	
	DATE	



FILE NAME = DBTRI-76C38-sht-plnpro-01-08.dgn	USER NAME = jdf	DESIGNED - LDC	REVISED -	<b>STATE OF ILLINOIS DEPARTMENT OF TRANSPORTATION</b>	<b>PLAN AND PROFILE</b>		F.A.U. RTE.	SECTION	COUNTY	TOTAL SHEETS	SHEET NO.
MODEL NAME = DBTRI-76C38-sht-plnpro-01	DRAWN - JDF	CHECKED - GEB	REVISED -		• 9166/9180	82-1-10N	ST. CLAIR	68	20		
PLOT SCALE = 1:20	DATE = 08/14/09	REVISOR -			FED. ROAD DIST. NO.	ILLINOIS FED. AID PROJECT					
PLOT DATE = 8/13/2009					SCALE: 1"=20'	SHEET NO. 1 OF 8 SHEETS	STA. 199+00.00 TO STA. 202+00.00				

8/13/2009 10:37:43 AM

P:\88-0030 CTE TRILEVEL\900 CAD\901 DRAWINGS\04 CONTRACT\SHEET\CVL\ROADWAY\PLANS\DBTRI-76C38-SHT-PLNPRO-01-08.DGN