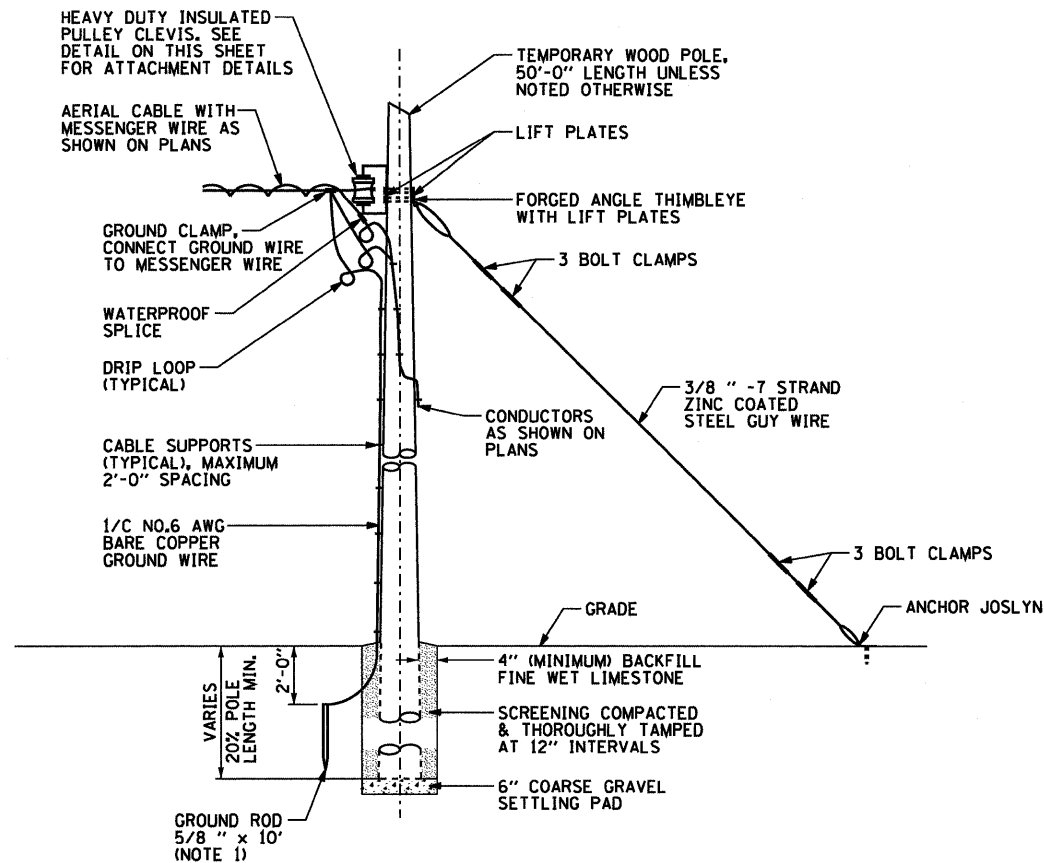
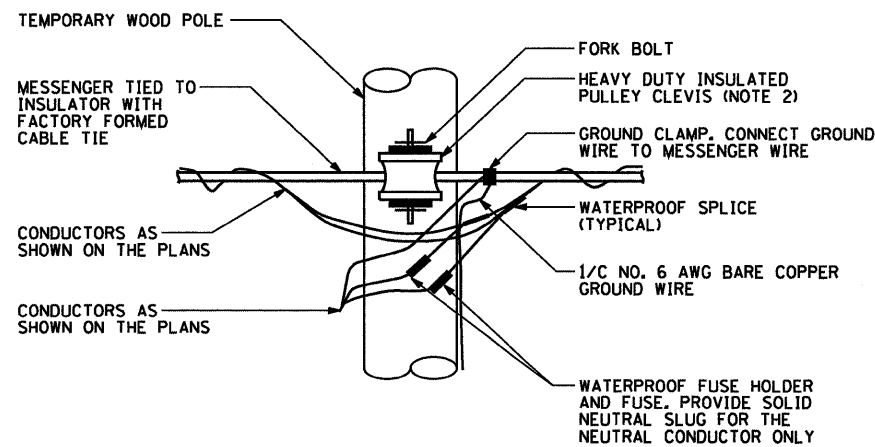


NOTES:

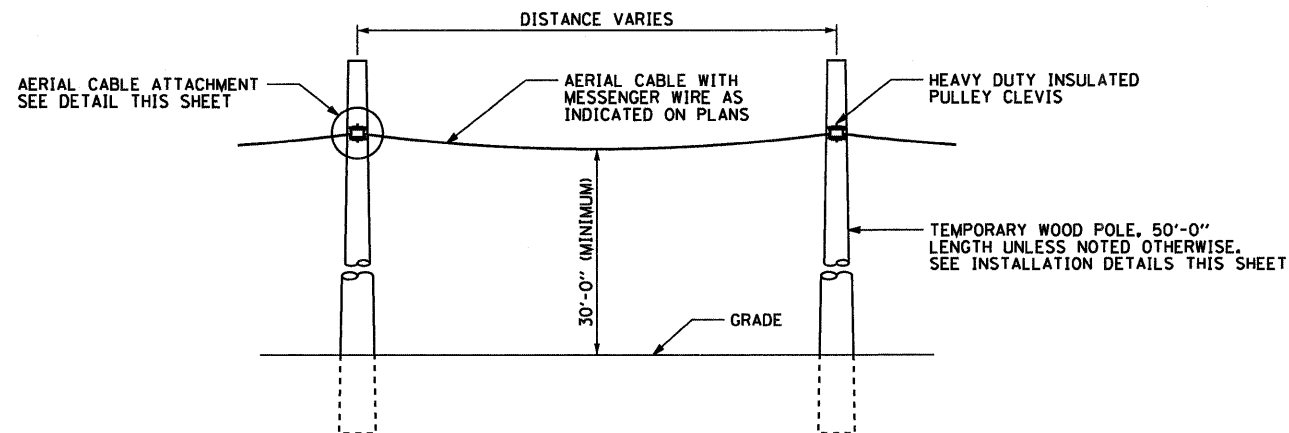
1. GROUND RODS SHALL BE INSTALLED FOR ALL TEMPORARY LIGHTING UNIT WOOD POLES AND AT THE END OF AN AERIAL RUN AS SHOWN ON THIS DRAWING.
2. HEAVY DUTY INSULATED PULLEY CLEVIS AND ALL ASSOCIATED HARDWARE REQUIRED FOR A COMPLETE INSTALLATION WILL BE INCLUDED FOR PAYMENT UNDER THE APPROPRIATE TEMPORARY WOOD POLE PAY ITEM.
3. CONTRACTOR MUST PROVIDE ALL HARDWARE NECESSARY FOR A COMPLETE INSTALLATION.



TEMPORARY WOOD END POLE INSTALLATION DETAILS
WOOD POLE INSTALLATION IS SIMILAR
(NOT TO SCALE)



TEMPORARY WOOD POLE AERIAL CABLE ATTACHMENT DETAIL
(NOT TO SCALE)



AERIAL CABLE INSTALLATION DETAIL
(NOT TO SCALE)

FILE NAME = DBTRI-76C38-shr-Light-82.dgn	USER NAME = lantzt	DESIGNED - JPC	REVISED -	STATE OF ILLINOIS DEPARTMENT OF TRANSPORTATION	LIGHTING DETAILS TEMPORARY POWER AND WOOD POLE DETAILS		F.A.U. RTE.	SECTION	COUNTY	TOTAL SHEETS	SHEET NO.
	PLOT SCALE = 1:8000' / IN.	DRAWN - TCL	REVISED -		•	82-1-10N	ST. CLAIR	68	51		
	PLOT DATE = 8/5/2009	CHECKED - JSF	REVISED -		• 9166/9180	CONTRACT NO. 76C38					
		DATE - 08/14/09	REVISED -		SCALE: NONE	SHEET NO. 1 OF 1 SHEETS	STA. N/A TO STA. N/A	FED. ROAD DIST. NO.	ILLINOIS FED. AID PROJECT		