

PART OF U.S. SURVEY 627, T2N, R10W, OF THE 3RD PM, ST. CLAIR COUNTY, ILLINOIS

SEE COORDINATE LIST AND BASIS OF COORDINATES AND BEARINGS STATEMENT ON SHEET 2

SEE SHEET 8

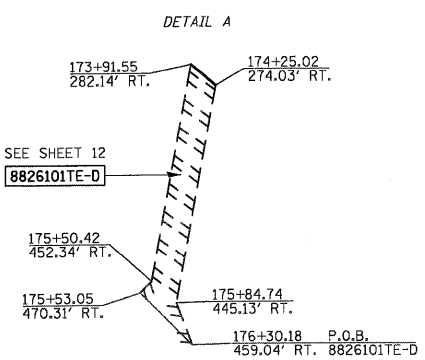
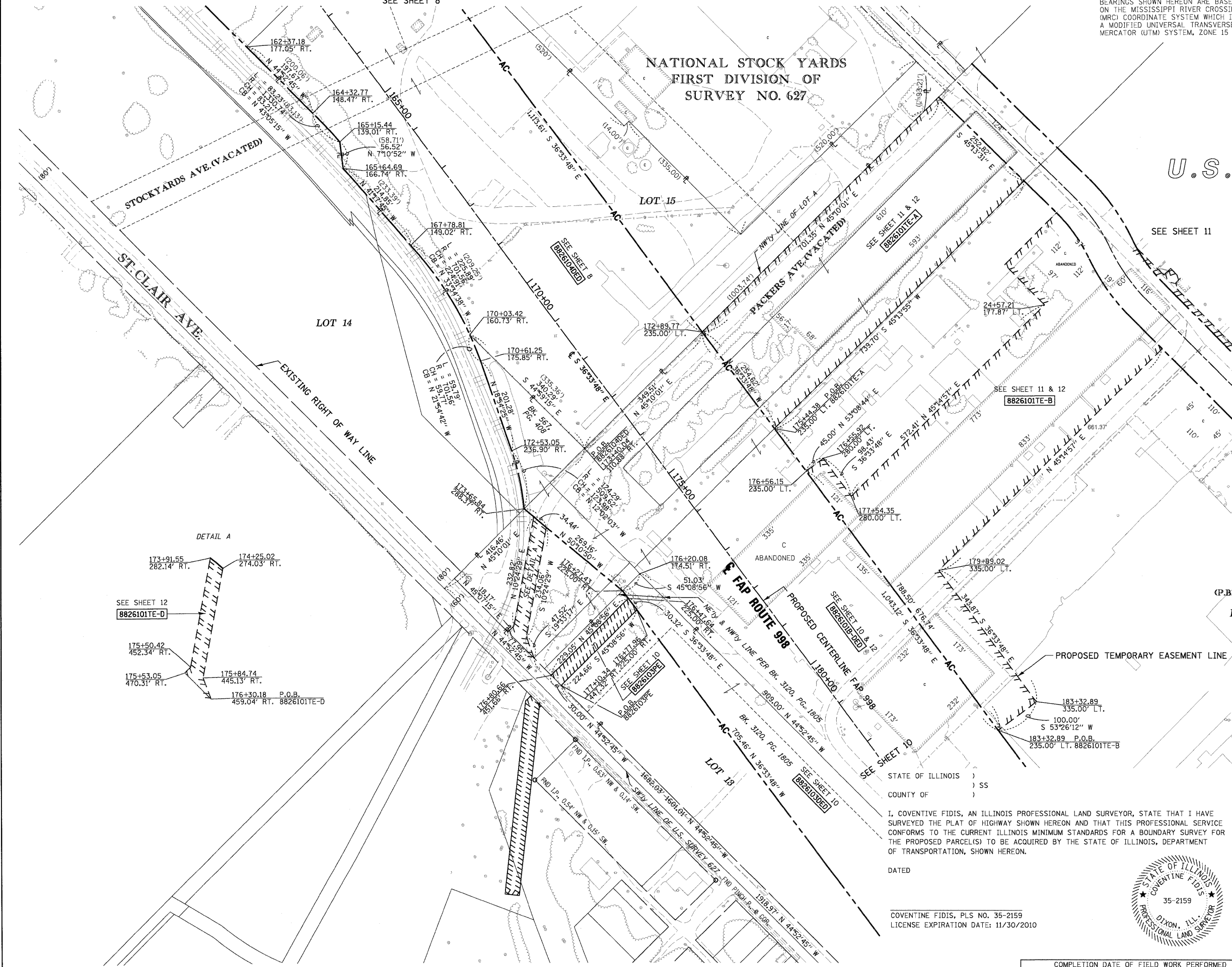
BEARINGS SHOWN HEREON ARE BASED ON THE MISSISSIPPI RIVER CROSSING (MRC) COORDINATE SYSTEM WHICH IS A MODIFIED UNIVERSAL TRANSVERSE MERCATOR (UTM) SYSTEM, ZONE 15 NORTH.



SPACE RESERVED FOR RECORDING OFFICER

NATIONAL STOCK YARDS
FIRST DIVISION OF
SURVEY NO. 627

U.S. SURVEY 627



(P.B.E, PG. 14)

LOT A

NOTE:
EXISTING R.O.W. OF ST. CLAIR AVE. ESTABLISHED PER BK OF DEEDS Y-5, PG. 97 & PB H, PG. 34

STATE OF ILLINOIS)
COUNTY OF) SS
I, COVENTINE FIDIS, AN ILLINOIS PROFESSIONAL LAND SURVEYOR, STATE THAT I HAVE SURVEYED THE PLAT OF HIGHWAY SHOWN HEREON AND THAT THIS PROFESSIONAL SERVICE CONFORMS TO THE CURRENT ILLINOIS MINIMUM STANDARDS FOR A BOUNDARY SURVEY FOR THE PROPOSED PARCEL(S) TO BE ACQUIRED BY THE STATE OF ILLINOIS, DEPARTMENT OF TRANSPORTATION, SHOWN HEREON.

DATED
COVENTINE FIDIS, PLS NO. 35-2159
LICENSE EXPIRATION DATE: 11/30/2010



ILLINOIS DEPARTMENT OF TRANSPORTATION
PLAT OF HIGHWAYS
FAP ROUTE 998
SECTION 82-1K
ST. CLAIR COUNTY
JOB NO. R-98-026-08
STATION 164+00 TO STATION 178+00

ILLINOIS DEPARTMENT OF TRANSPORTATION
DIVISION OF HIGHWAYS/REGION 5/DISTRICT 8
1102 EASTPORT PLAZA DRIVE
COLLINSVILLE, ILLINOIS 62234-6198

F.A. RTE.	SECTION	COUNTY	TOTAL SHEETS	SHEET NO.
			25	24

CONTRACT NO. _____