

STATE OF ILLINOIS  
DEPARTMENT OF TRANSPORTATION  
DIVISION OF HIGHWAYS

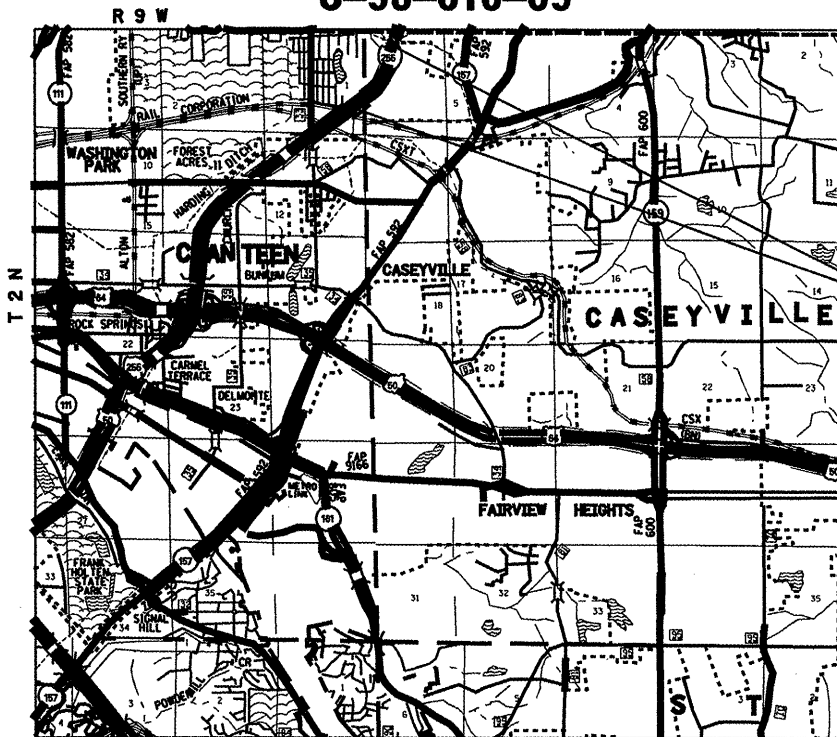
**PROPOSED  
HIGHWAY PLANS**

F.A.I. ROUTE 255 (I-255)  
SECTION 82-1T-2

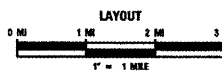
ST. CLAIR COUNTY

KELLER PUMP STATION LINER INSTALLATION

C-98-016-09

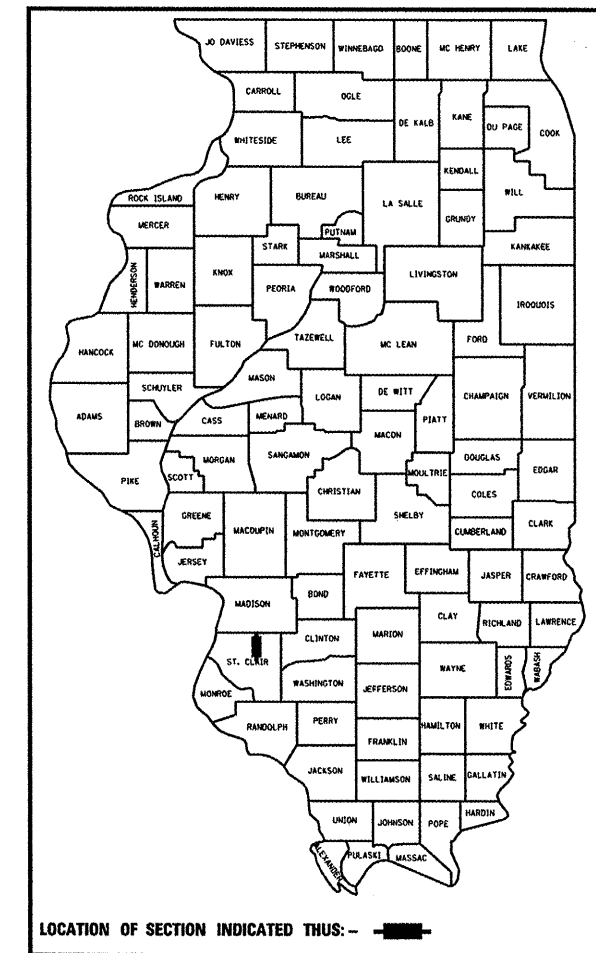


NOT TO SCALE



F.A.I. RTE.	SECTION	COUNTY	TOTAL SHEETS	SHEET NO.
255	82-1T-2	ST. CLAIR	5	1
FED. ROAD DIST. NO.	ILLINOIS	CONTRACT NO. 76C77		

D98-020-09



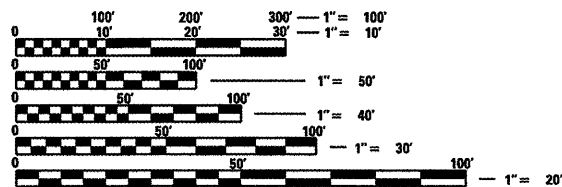
LOCATION OF SECTION INDICATED THUS: - [black rectangle] -

SUBJECT LOCATION:  
STA. 1192+50 (FAI 255)  
STA. 109+00 (RAMP 9)

INDEX OF SHEETS

- 1 COVER SHEET, STANDARDS
- 2 GENERAL NOTES
- 3 SUMMARY OF QUANTITIES
- 4 PLAN SHEET
- 5 DETAILS SHEET

STANDARDS  
000001-05



FULL SIZE PLANS HAVE BEEN PREPARED USING STANDARD ENGINEERING SCALES. REDUCED SIZED PLANS WILL NOT CONFORM TO STANDARD SCALES. IN MAKING MEASUREMENTS ON REDUCED PLANS, THE ABOVE SCALES MAY BE USED.

J.U.L.I.E.  
JOINT UTILITY LOCATION INFORMATION FOR EXCAVATION  
1-800-892-0123  
OR 811

PROJECT ENGINEER: PATTI LEBEAU (618)346-3179  
PROJECT MANAGER: CHERYL KEPLAR (618)346-3186

CONTRACT NO. 76C77

STATE OF ILLINOIS  
DEPARTMENT OF TRANSPORTATION  
DIVISION OF HIGHWAYS

SUBMITTED August 19, 2009  
*May C. James*  
DEPUTY DIRECTOR OF HIGHWAYS, REGION ENGINEER  
October 2, 2009  
*Charles G. Ingersoll*  
ENGINEER OF DESIGN AND ENVIRONMENT  
October 2, 2009  
*Christine M. Reed*  
DIRECTOR OF HIGHWAYS/CHIEF ENGINEER

PRINTED BY THE AUTHORITY  
OF THE STATE OF ILLINOIS

Rev.

GENERAL NOTES

1. THE CONTRACTOR CAN ONLY INSTALL LINER IN LOW WATER LEVELS IN CANTEEN CREEK AND KELLER DITCH. NO WORKING DAYS WILL BE CHARGED IF THE WATER LEVELS ARE DEEMED BY THE RE/RT TO BE TOO HIGH.

COMMITMENTS

NONE

FILE NAME = #FILEL#	USER NAME = #USER#	DESIGNED - ---	REVISED - ---	<b>STATE OF ILLINOIS DEPARTMENT OF TRANSPORTATION</b>	<b>GENERAL NOTES</b>	F.A.I. RTE.	SECTION	COUNTY	TOTAL SHEETS	SHEET NO.	
		DRAWN - ---	REVISED - ---			255	82-11-2	ST. CLAIR	5	2	
		CHECKED - ---	REVISED - ---			<b>CONTRACT NO. 16C77</b>					
		DATE - -----	REVISED - ---			SCALE: ----- SHEET NO. ___ OF ___ SHEETS STA. ----- TO STA. ----- FED. ROAD DIST. NO. - ILLINOIS FED. AID PROJECT					

# SUMMARY OF QUANTITIES

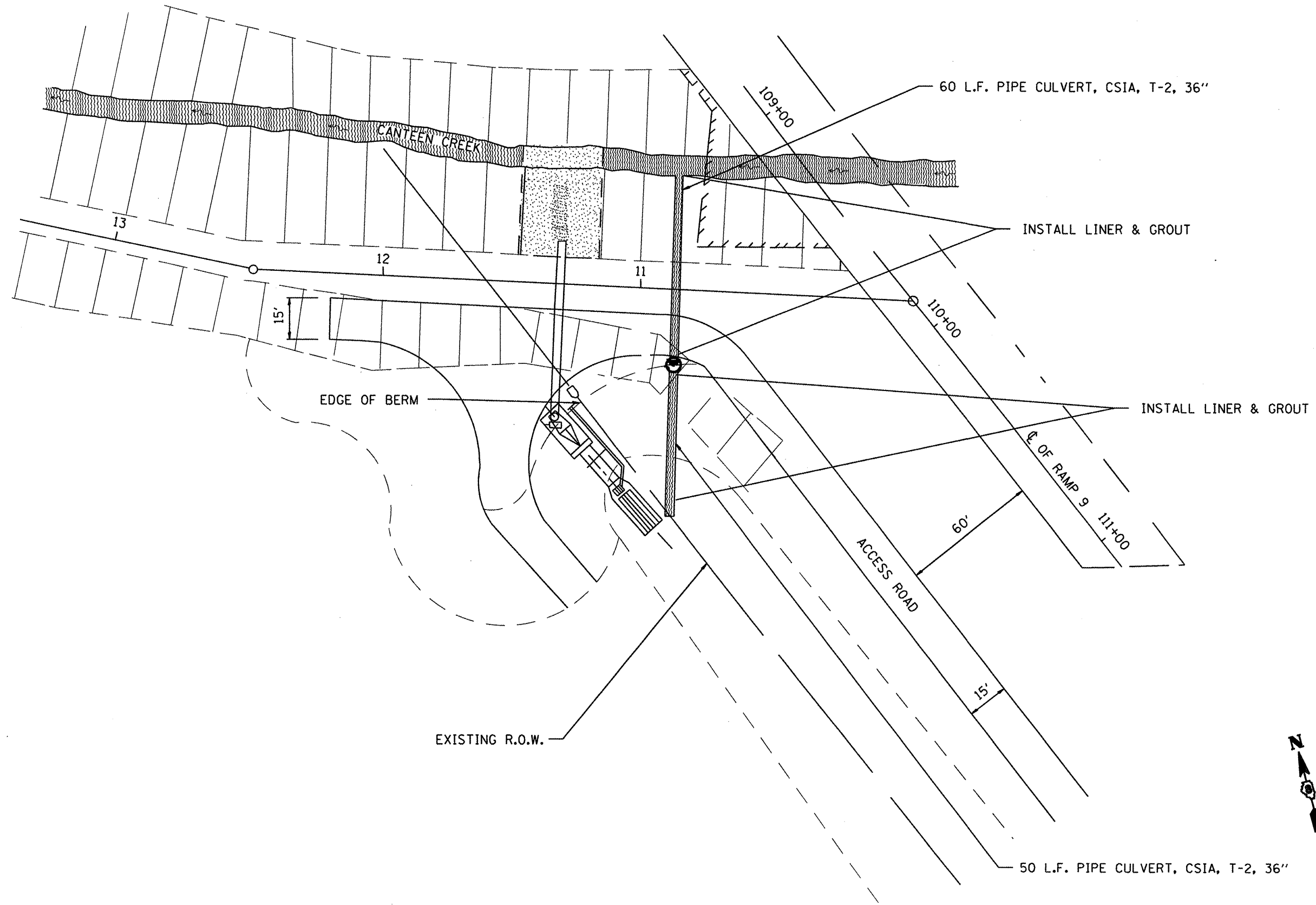
SUMMARY OF QUANTITIES			URBAN	CODE Y007
CODE NO	ITEM	UNIT	TOTAL QUANTITIES	100% STATE
54390220	INSERTION CULVERT LINER 32"	FOOT	110	110
67100100	MOBILIZATION	L SUM	1	1

FILE NAME =	USER NAME = *USER*	DESIGNED - ---	REVISED - ---
#FILE#		DRAWN - ---	REVISED - ---
	PLOT SCALE = *SCALE*	CHECKED - ---	REVISED - ---
	PLOT DATE = *DATE*	DATE - -----	REVISED - ---

**STATE OF ILLINOIS  
DEPARTMENT OF TRANSPORTATION**

SUMMERAY OF QUANTITIES

SCALE: .....	SHEET NO. .. OF ... SHEETS	STA. .... TO STA. ....	F.A. RTE. 255	SECTION 82-11-2	COUNTY ST. CLAIR	TOTAL SHEETS 5	SHEET NO. 3
			CONTRACT NO. 76C77				
FED. ROAD DIST. NO. ILLINOIS FED. AID PROJECT							



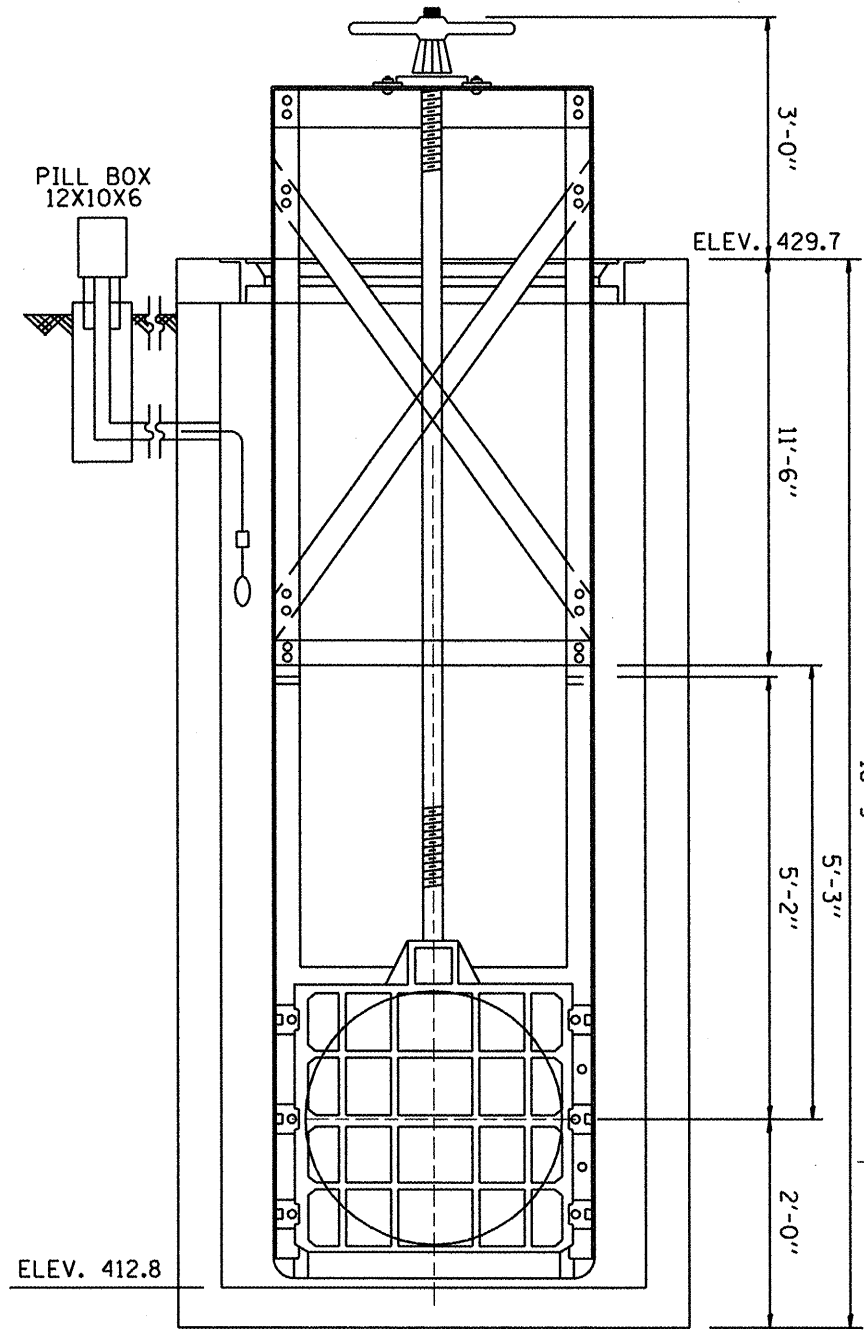
FILE NAME =	USER NAME = #USER#	DESIGNED -	REVISED -
#FILE#		DRAWN -	REVISED -
		CHECKED -	REVISED -
		DATE -	REVISED -

**STATE OF ILLINOIS  
DEPARTMENT OF TRANSPORTATION**

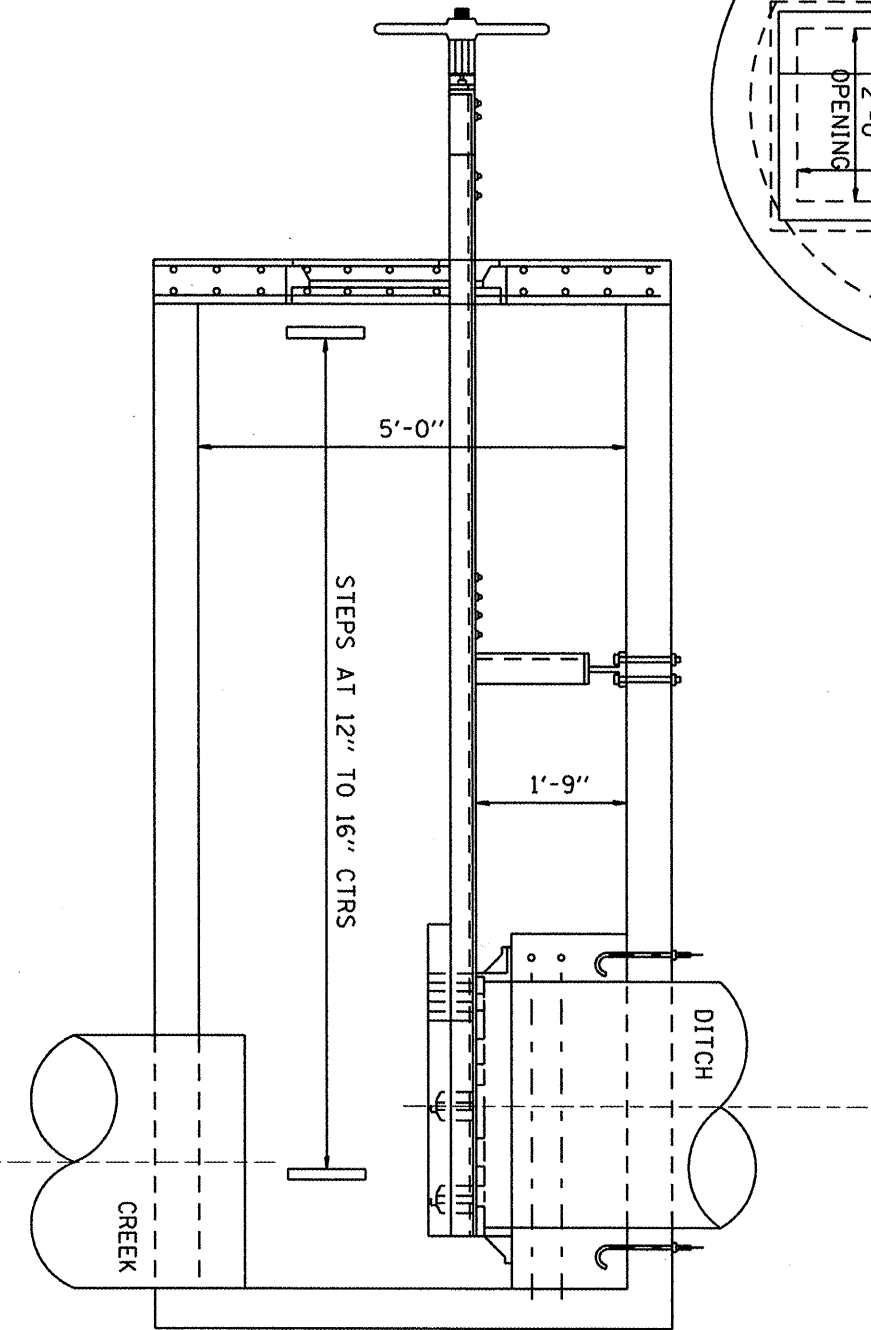
**DETAIL SHEET**

SCALE: \_\_\_\_\_ SHEET NO. \_\_\_\_ OF \_\_\_\_ SHEETS STA. \_\_\_\_\_ TO STA. \_\_\_\_\_

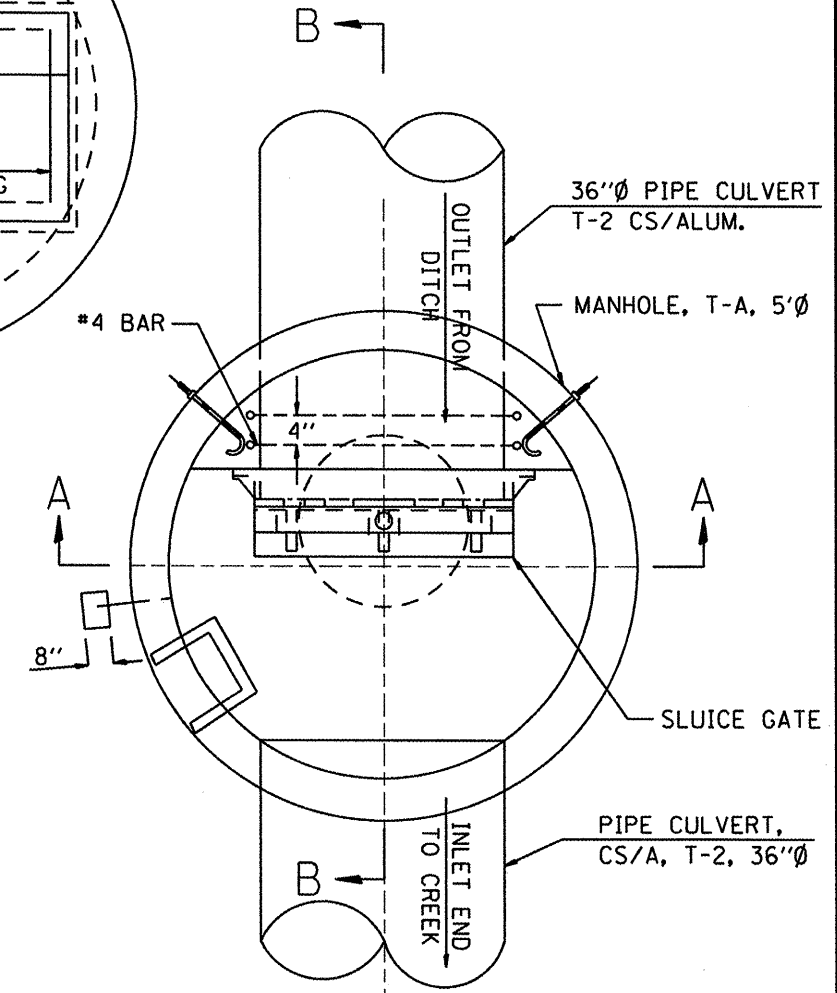
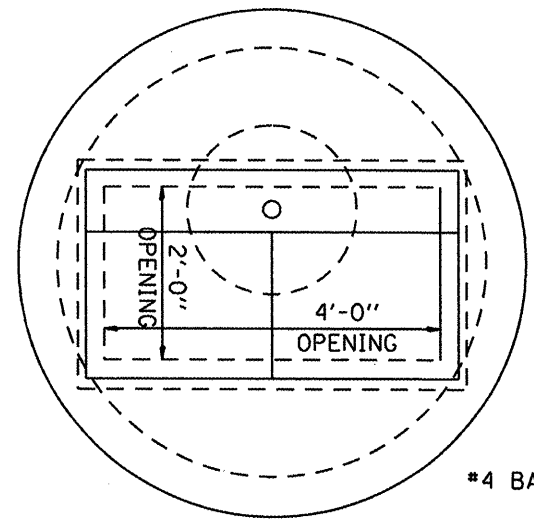
F.A.J. RTE.	SECTION	COUNTY	TOTAL SHEETS	SHEET NO.
295	82-112	SI...CLAIB	5	4
CONTRACT NO. 76CTT				
ILLINOIS FED. AID PROJECT				



SECTION A-A



SECTION B-B



FILE NAME =	USER NAME = #USER#	DESIGNED -	REVISED -
#FILEL#		DRAWN -	REVISED -
	PLOT SCALE = #SCALE#	CHECKED -	REVISED -
	PLOT DATE = #DATE#	DATE -	REVISED -

**STATE OF ILLINOIS  
DEPARTMENT OF TRANSPORTATION**

**DETAIL SHEET**

SCALE: \_\_\_\_\_ SHEET NO. \_\_\_\_\_ OF \_\_\_\_\_ SHEETS STA. \_\_\_\_\_ TO STA. \_\_\_\_\_

F.A.J. RTE.	SECTION	COUNTY	TOTAL SHEETS	SHEET NO.
295	B2-11-2	SI...CL018	5	5
CONTRACT NO. 76C77			ILLINOIS FED. AID PROJECT	