

STATE OF ILLINOIS
DEPARTMENT OF TRANSPORTATION

GENERAL NOTES

Reinforcement bars shall conform to the requirements of ASTM A 706 Gr 60. See Special Provisions.

Reinforcement bars designated (E) shall be epoxy coated.

Prior to pouring the new concrete deck, all heavy or loose rust, loose mill scale, and other loose or potentially detrimental foreign material shall be removed from the surfaces in contact with concrete. Tightly adhered paint may remain unless otherwise noted. Removal shall be accomplished by methods that will not damage the steel and the cost will be included in the pay item covering removal of the existing concrete.

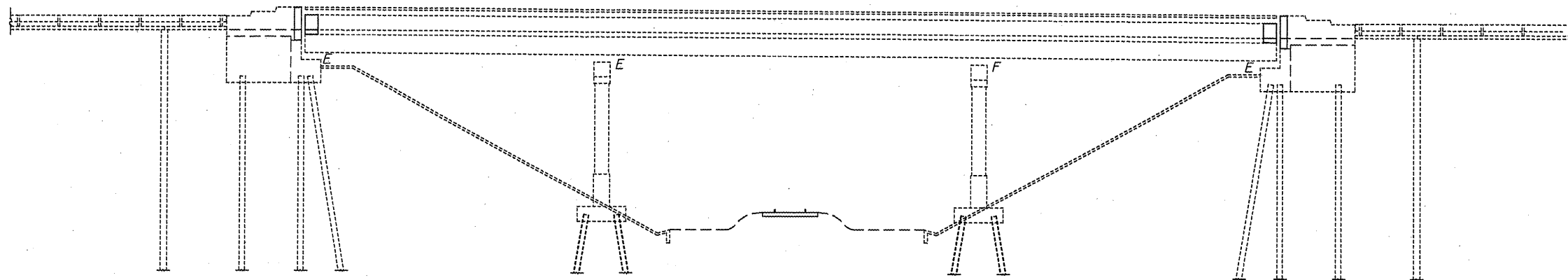
As directed by the Engineer, existing construction accessories welded to the top flange of beams and girders shall be removed. The weld areas shall be ground flush and inspected for cracks using magnetic particle testing (MT) or dye penetrant testing (PT) by qualified personnel approved by the Engineer.

Any cracks that cannot be removed by grinding 1/4 inch deep shall be identified and reported to the Bureau of Bridges and Structures for further disposition. The cost of removing welded accessories, grinding and inspecting weld areas and grinding cracks will be paid for according to Article 109.04 of the Standard Specifications.

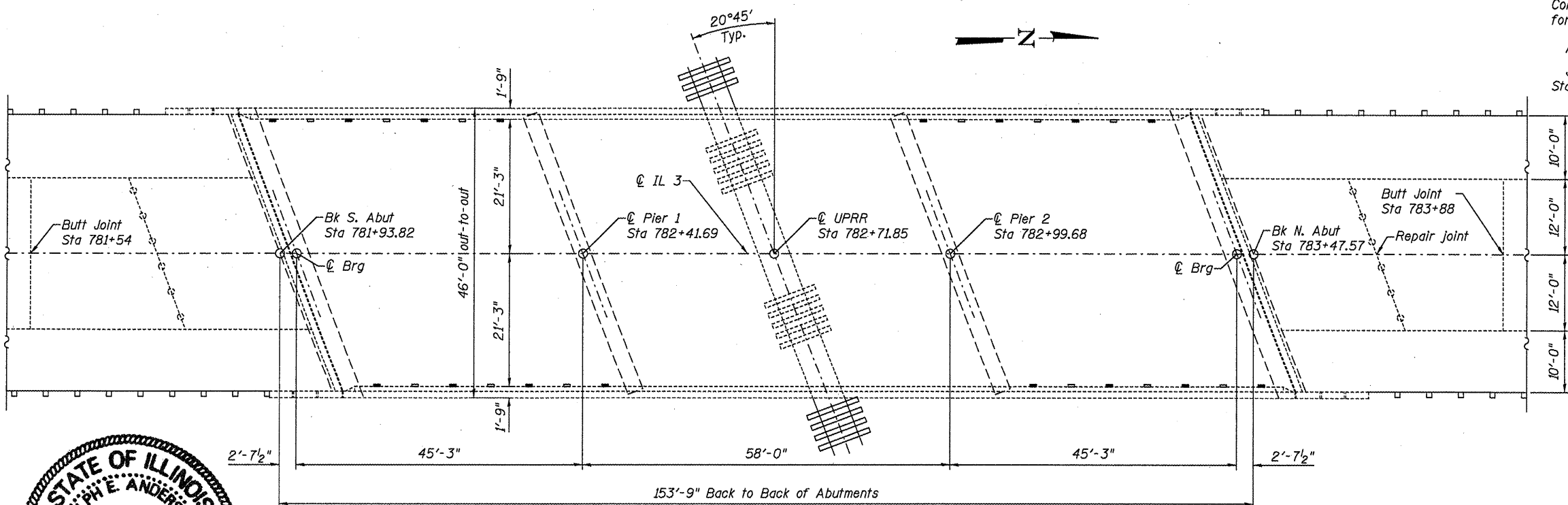
Plan dimensions and details relative to existing plans are subject to nominal construction variations. The Contractor shall field verify existing dimensions and details affecting new construction and make necessary approved adjustments prior to construction or ordering of materials. Such variations shall not be cause for additional compensation for a change in scope of the work, however, the Contractor will be paid for the quantity actually furnished at the unit price bid for the work.

All structural steel shall be AASHTO M 270 Grade 36, unless noted otherwise.

Joint openings shall be adjusted according to Article 520.04 of the Standard Specs.



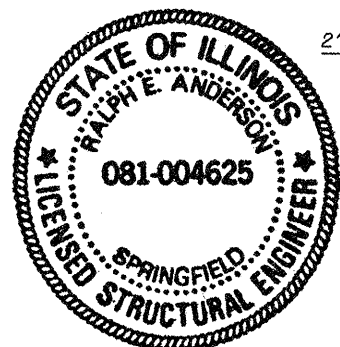
ELEVATION
(Looking West)



PLAN

TOTAL BILL OF MATERIAL

ITEM	UNIT	TOTAL
Concrete Removal	Cu. Yd.	13.3
Protective Shield	Sq. Yd.	249
Concrete Superstructure	Cu. Yd.	14.7
Bridge Deck Grooving	Sq. Yd.	675
Protective Coat	Sq. Yd.	720
Floor Drain Extension	Each	12
Furnishing and Erecting Structural Steel	Pound	1530
Jack And Remove Existing Bearings	Each	12
Reinforcement Bars, Epoxy Coated	Pound	1520
Bar Splicers	Each	24
Preformed Joint Strip Seal	Foot	102.5
Elastomeric Bearing Assembly, Type I	Each	6
Elastomeric Bearing Assembly, Type II	Each	6
Anchor Bolts, 1"	Each	24
Plug Existing Deck Drains	Each	16
Bridge Deck Microsilica Concrete Overlay 2 1/4"	Sq. Yd.	689
Bridge Deck Hydro-Scarification 1/2"	Sq. Yd.	689
Deck Slab Repair (Full Depth, Type II)	Sq. Yd.	97.0

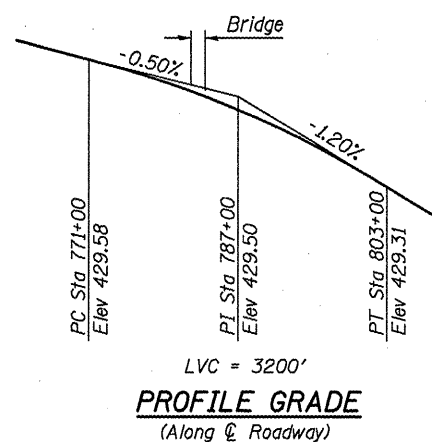


Expires Nov 30, 2010

DESIGNED	J. Uehle
CHECKED	B. Williams
DRAWN	J. Uehle
CHECKED	B. Williams

November 8, 2009
EXAMINED *[Signature]*
PASSED *[Signature]*
ENGINEER OF STRUCTURAL SERVICES
ENGINEER OF BRIDGES AND STRUCTURES

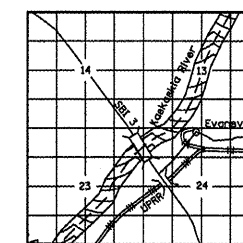
- ☐ Extend existing drains
- ☐ Plug existing drain



PROFILE GRADE
(Along E Roadway)

INDEX OF SHEETS

1. General Plan & Elevation
2. Deck Cross Section
3. Joint Details
4. Strip Seal Details
5. Drain Details
6. Deck Patching Survey
7. N. Abutment Bearings
8. S. Abutment Bearings
9. Bar Splicer Base Sheet



LOCATION SKETCH

GENERAL PLAN & ELEVATION

IL 3 OVER UPRR
SN 079-0037

SHEET NO. 1	F.A.P. RTE.	SECTION	COUNTY	TOTAL SHEETS	SHEET NO.
9 SHEETS	312	73-VB-I	Randolph	21	12
FED. ROAD DIST. NO.			ILLINOIS	FED. AID PROJECT	
CONTRACT NO. 76C78					