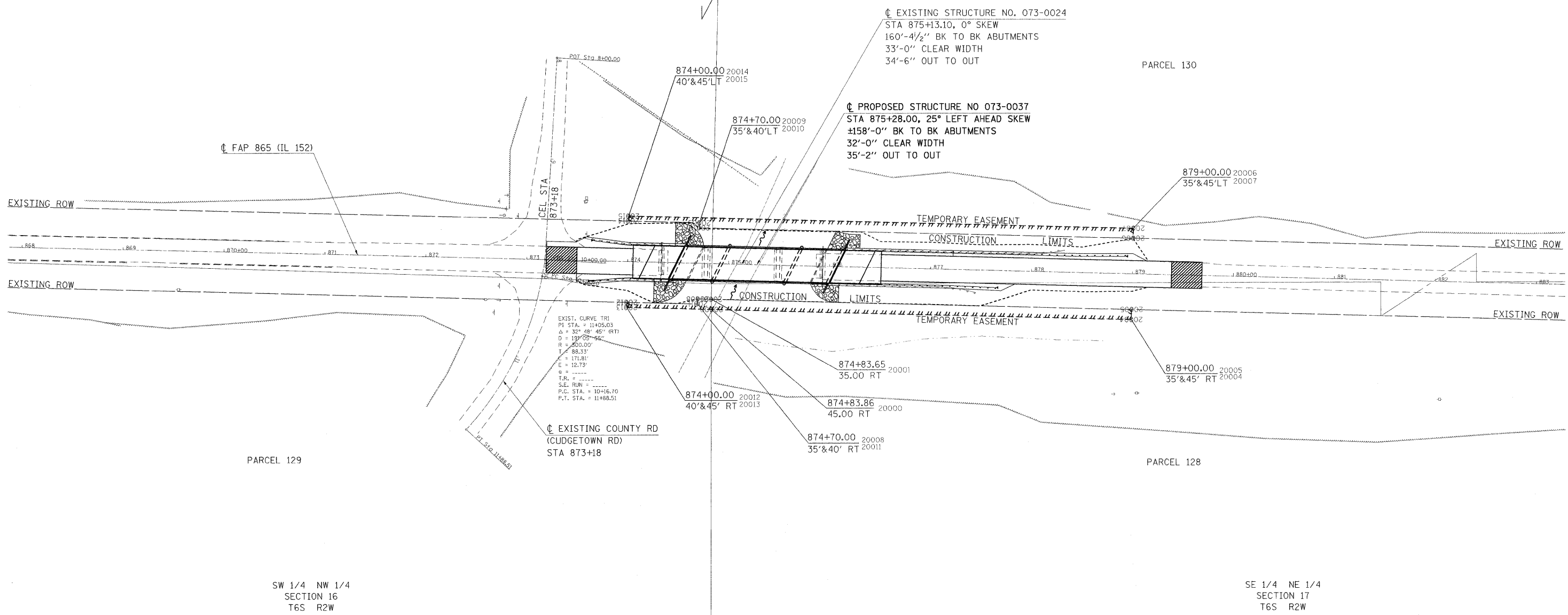


NW 1/4 SW 1/4
SECTION 16
T6S R2W

NE 1/4 SE 1/4
SECTION 17
T6S R2W

POINT COORDINATES		
PT 20000	N 487516.6149	E 2536176.1464
PT 20001	N 487506.6126	E 2536176.1152
PT 20004	N 487526.8414	E 2535760.1333
PT 20005	N 487516.8444	E 2535759.8875
PT 20006	N 487446.8656	E 2535758.1673
PT 20007	N 487436.8686	E 2535757.9215
PT 20008	N 487506.2772	E 2536189.7588
PT 20009	N 487431.2986	E 2536187.9132
PT 20010	N 487436.2984	E 2536188.0363
PT 20011	N 487511.2757	E 2536189.8805
PT 20012	N 487509.5555	E 2536259.8594
PT 20013	N 487514.5540	E 2536259.9823
PT 20014	N 487429.5797	E 2536257.8934
PT 20015	N 487424.5812	E 2536257.7705

PARCEL NO.	NAME	PURPOSE	ACREAGE
128	RONI GREGORI TRUST	T.E.	0.119
129	PHILLIP ALVIS	T.E.	0.003
130	SPRINGFIELD COAL CO. LLC	T.E.	0.122



EXIST. CURVE TRI
P1 STA. = 11+95.03
Δ = 32° 48' 45" (RT)
D = 139' 05" 55"
R = 200.00'
L = 98.33'
E = 171.81'
S = 12.73'
T.R. =
S.E. RUN =
P.C. STA. = 10+16.70
P.T. STA. = 11+88.51

FILE NAME c:\pw_work\pwidot\HALSTEAOTW\dms49788\978064_sht_row.dgn	USER NAME = halsteadtw	DESIGNED -	REVISED -	STATE OF ILLINOIS DEPARTMENT OF TRANSPORTATION	RIGHT OF WAY PLAN		F.A.P. RTE. 865	SECTION 16B-2	COUNTY PERRY	TOTAL SHEETS 47	SHEET NO. 9	
78064/CADD/SHEETS/978064_SHT_ROW.DGN	PLOT SCALE = 50.0000 ' / IN.	DRAWN -	REVISED -		PROJECT	JOB NO. R99-017-09	CONTRACT NO. 78064		FED. ROAD DIST. NO. ILLINOIS FED. AID PROJECT			
	PLOT DATE = 6/23/2009	CHECKED -	REVISED -		SCALE: 1"=50'	SHEET NO. 1 OF 1 SHEETS	STA. 226+00.00 TO STA. 238+00.00					
		DATE -	REVISED -									