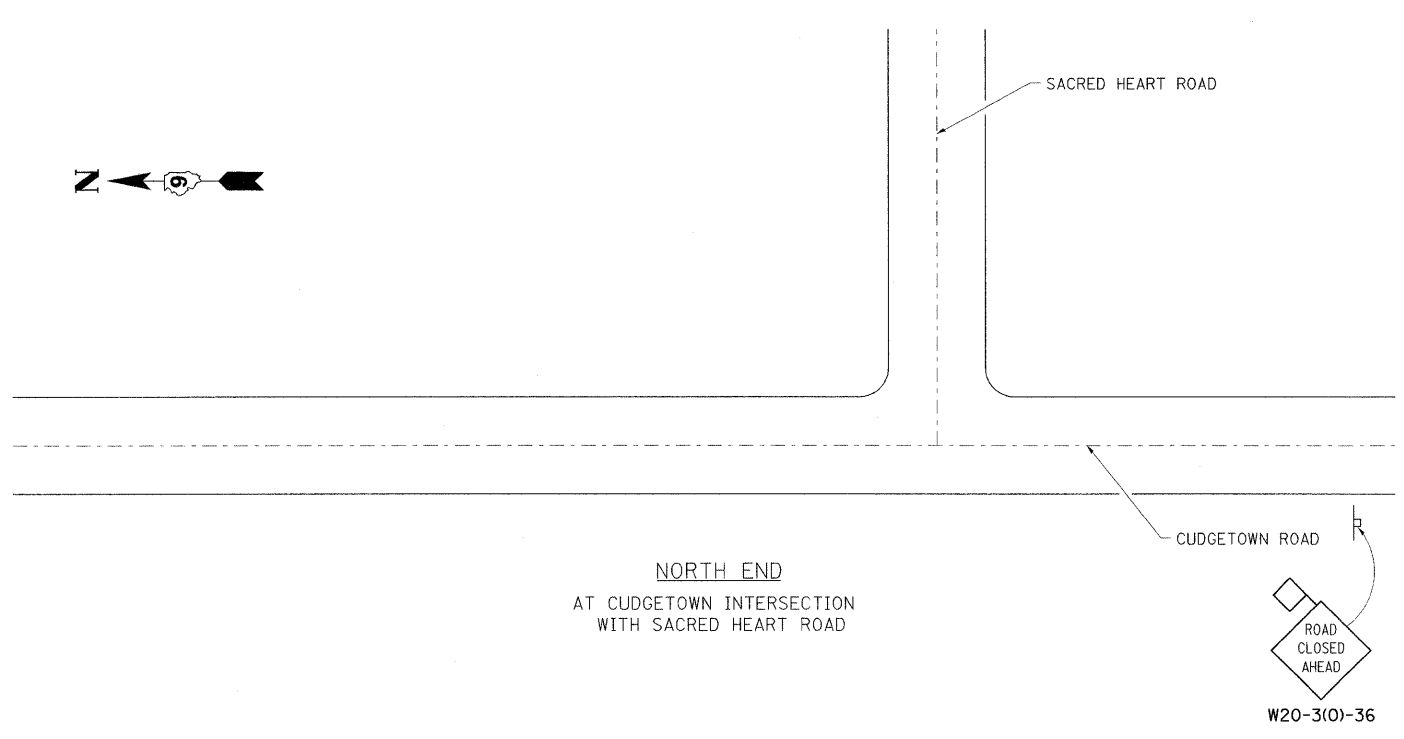


ROAD CLOSURE PLAN

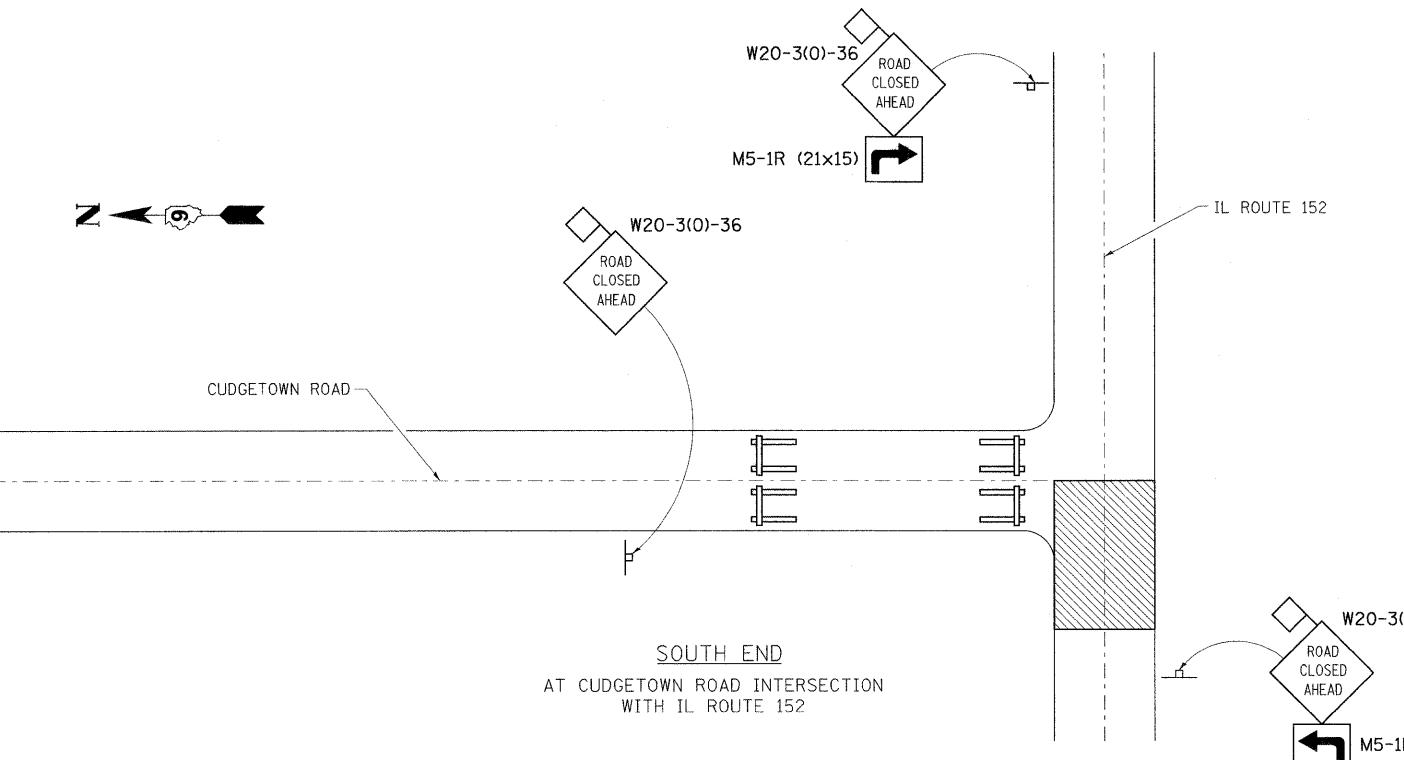
STAGE II ONLY

DETOUR SIGNING PLAN



NORTH END
AT CUDGETOWN INTERSECTION
WITH SACRED HEART ROAD

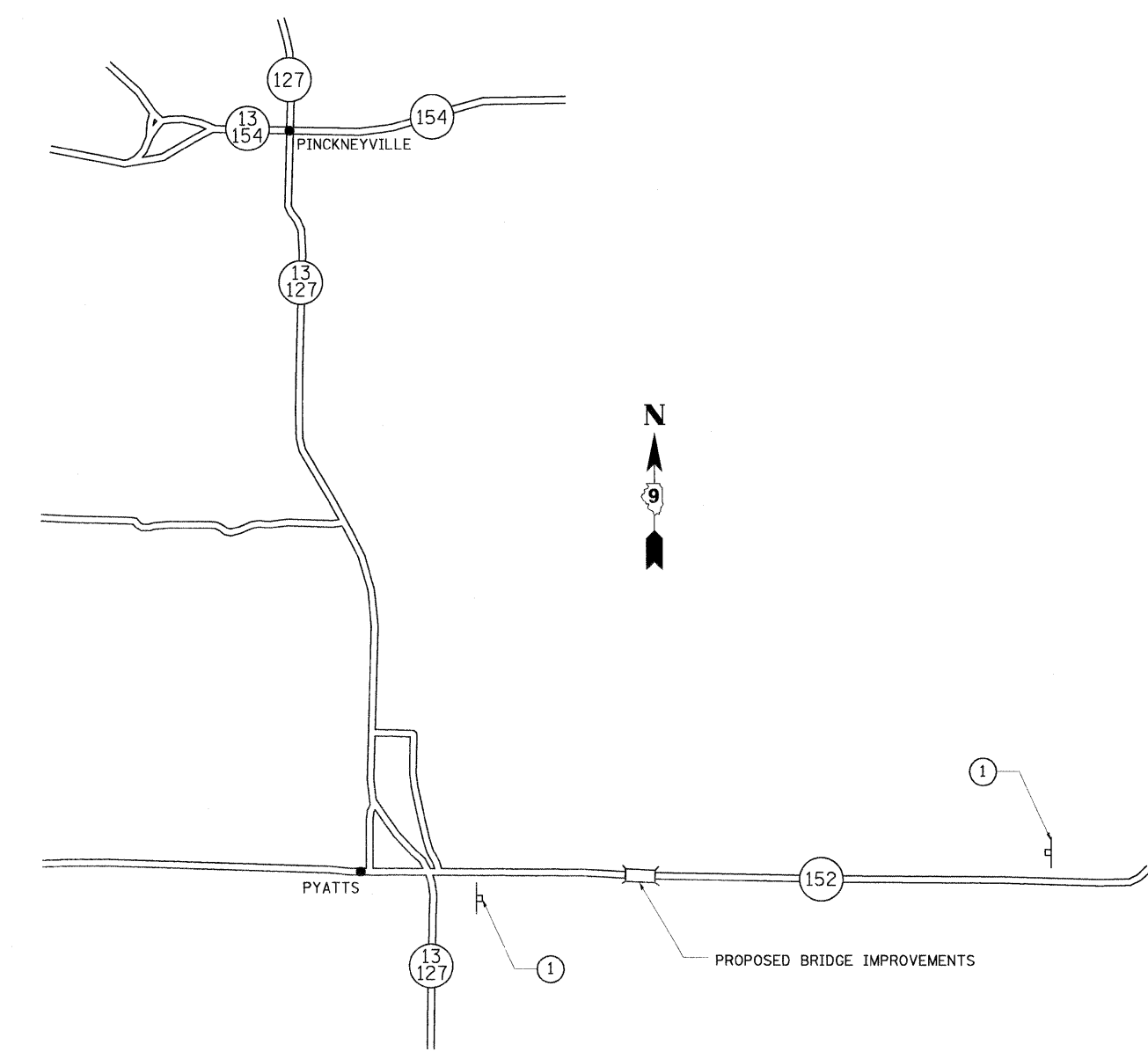
W20-3(O)-36



SOUTH END
AT CUDGETOWN ROAD INTERSECTION
WITH IL ROUTE 152

W20-3(O)-36

M5-1L (21x15)



PYATTS

PROPOSED BRIDGE IMPROVEMENTS

SYMBOLS

- WORK AREA
- TYPE III BARRICADE
- SIGN WITH 18" BY 18" (MINIMUM) ORANGE FLAG ATTACHED

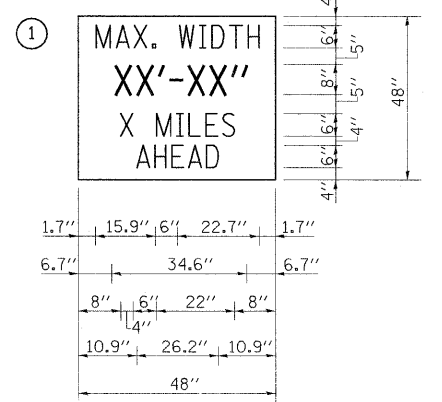
NOTES:

1. TRAFFIC CONTROL TO BE PROVIDED IN ACCORDANCE WITH HIGHWAY STANDARD B.L.R. 21-8 AND AS SPECIFIED HEREIN, AND SHALL BE PAID AT THE CONTRACT PRICE PER "LUMP SUM" FOR TRAFFIC CONTROL AND PROTECTION, STANDARD BLR 21 (SPECIAL).
2. SIGN LOCATIONS, INCLUDING PORTABLE CHANGEABLE MESSAGE SIGN, SHALL BE DETERMINED BY THE ENGINEER.
3. SEE HIGHWAY STANDARD B.L.R. 21-8 FOR DETAILS NOT SHOWN.

DETOUR NOTES

1. THE CONTRACTOR SHALL FURNISH THE POSTS AND ERECT THE SIGNS AT THE LOCATIONS DIRECTED BY THE ENGINEER. ALL SIGNS SHALL BE POST MOUNTED
2. THE ABOVE NOTED WORK, INCLUDING SIGN, POSTS, HARDWARE AND LABOR SHALL BE INCLUDED IN THE CONTRACT UNIT PRICE, EACH, FOR TRAFFIC CONTROL AND PROTECTION, STD 701321 AND NO OTHER COMPENSATION WILL BE ALLOWED.
3. THE WIDTH SHOWN ON THE W12-I103 SIGN SHALL BE 11'-0" FOR STAGE 1 AND 11'-6" FOR STAGE 2 OR AS DIRECTED BY THE ENGINEER. THE "X" MILES AHEAD WILL BE DETERMINED BY THE ENGINEER.

SIGN LEGEND



W12-I103

SERIES D ALPHABET. NO BORDER. BLACK ON WHITE.

FILE NAME =	USER NAME = halsteadtw	DESIGNED -	REVISED -	STATE OF ILLINOIS DEPARTMENT OF TRANSPORTATION	DETOUR SIGNING AND ROAD CLOSURE			F.A.P. RTE.	SECTION	COUNTY	TOTAL SHEETS	SHEET NO.
cs:\pw_work\p\WIDOT\HALSTEADTW\dms49780\978064_sht_misc.dgn	978064_sht_misc.dgn	DRAWN -	REVISED -		865	16B-2	PERRY	47	11			
	PLOT SCALE = 50,0000 ' / IN.	CHECKED -	REVISED -		SCALE: SHEET NO. OF SHEETS STA. TO STA.			CONTRACT NO. 78064				
78064/CADDSHEETS/0978064_SHT_MISC.DGN	PLOT DATE = 6/8/2009	DATE -	REVISED -		ILLINOIS FED. AID PROJECT							