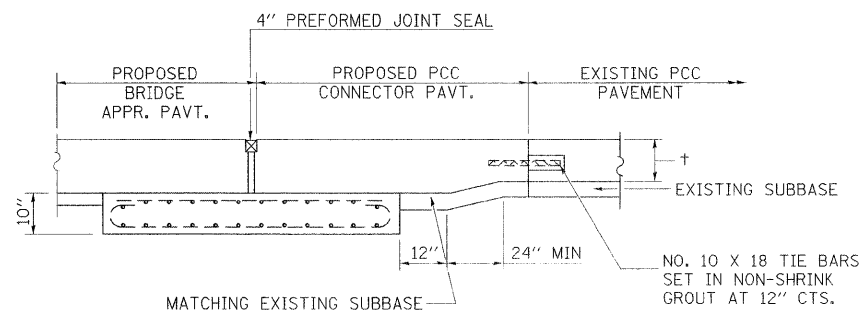
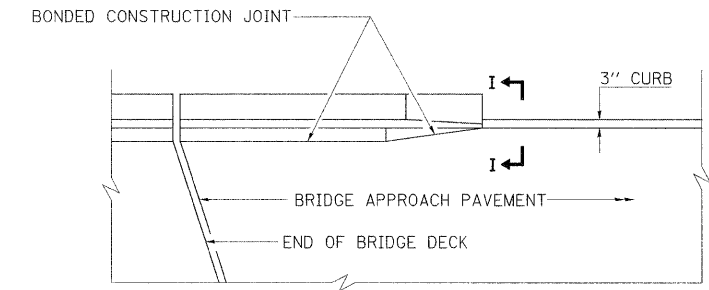
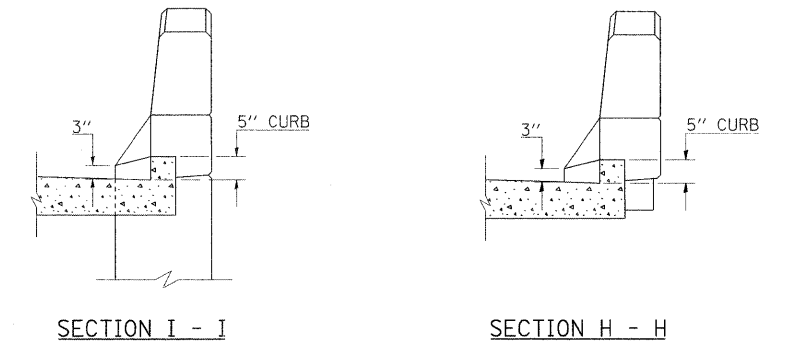


BRIDGE APPROACH PAVEMENT CONNECTOR (PCC)

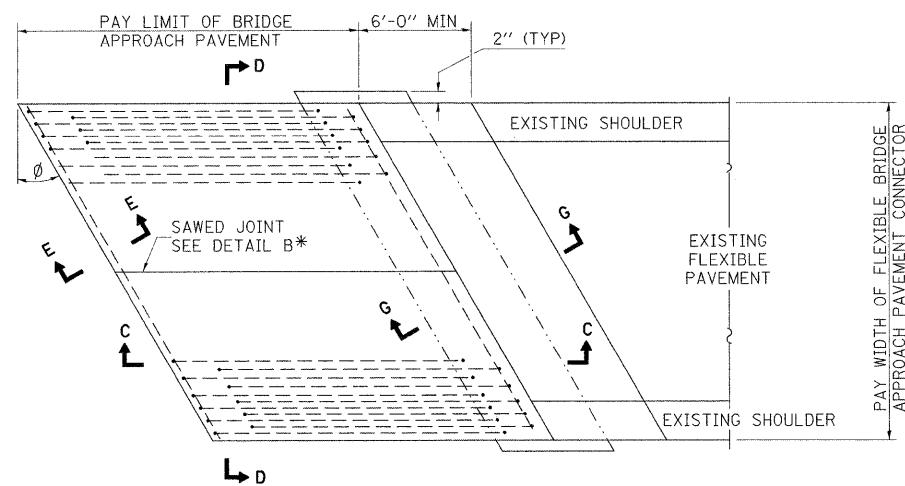


SECTION G-G - RIGID PAVEMENT

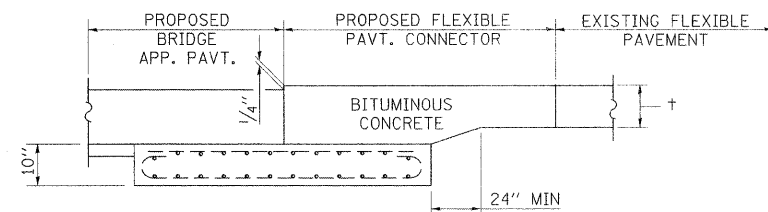


PARAPET TO CURB TRANSITION  
PILE BENT ABUTMENT

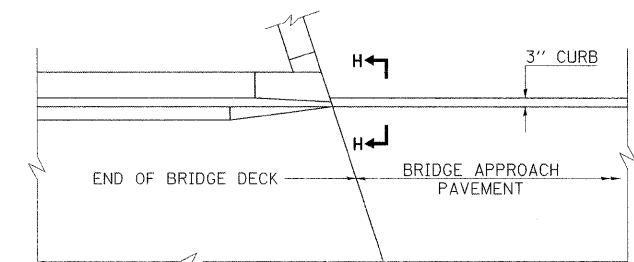
NOTE: SEE STANDARD 420401-07 FOR DETAILS ON PCC CONNECTOR PAVEMENT.



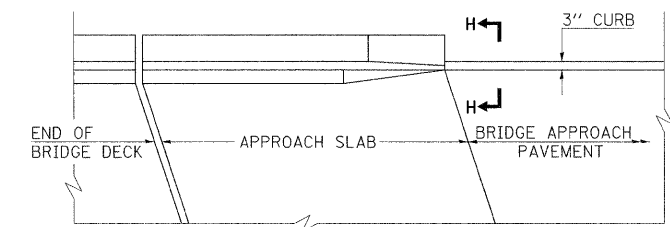
BRIDGE APPROACH PAVEMENT CONNECTOR (FLEXIBLE)



SECTION G-G - FLEXIBLE PAVEMENT



PARAPET TO CURB TRANSITION  
INTEGRAL ABUTMENT



PARAPET TO CURB TRANSITION  
VAULTED ABUTMENT

**EXISTING CONSTRUCTION**

**BRIDGE APPROACH PAVEMENT DETAIL  
IL 152 OVER PANTHER CREEK  
PERRY COUNTY  
SN 073-0037**

FILE NAME = c:\pw_work\VPWIDOT\HALSTEADT\dm49780\	USER NAME = halsteadtw 4978064_sht_misc.dgn	DESIGNED - --- DRAWN - ---	REVISED - REVISED -	<b>STATE OF ILLINOIS DEPARTMENT OF TRANSPORTATION</b>	<b>BRIDGE APPROACH PAVEMENT DETAIL IL 152 OVER PANTHER CREEK</b>				F.A.P. RTE. 865	SECTION 16B-2	COUNTY PERRY	TOTAL SHEETS 47	SHEET NO. 15
78064/CADD/SHEETS/D978064_SHT_MISC.DGN	PLOT SCALE = 50,0000 / IN. PLOT DATE = 6/8/2009	CHECKED - --- DATE - 11/2008	REVISED - REVISED -		SCALE: N.T.S.	SHEET NO.	OF	SHEETS	STA.	TO STA.	FED. ROAD DIST. NO.	ILLINOIS FED. AID PROJECT	CONTRACT NO. 78064