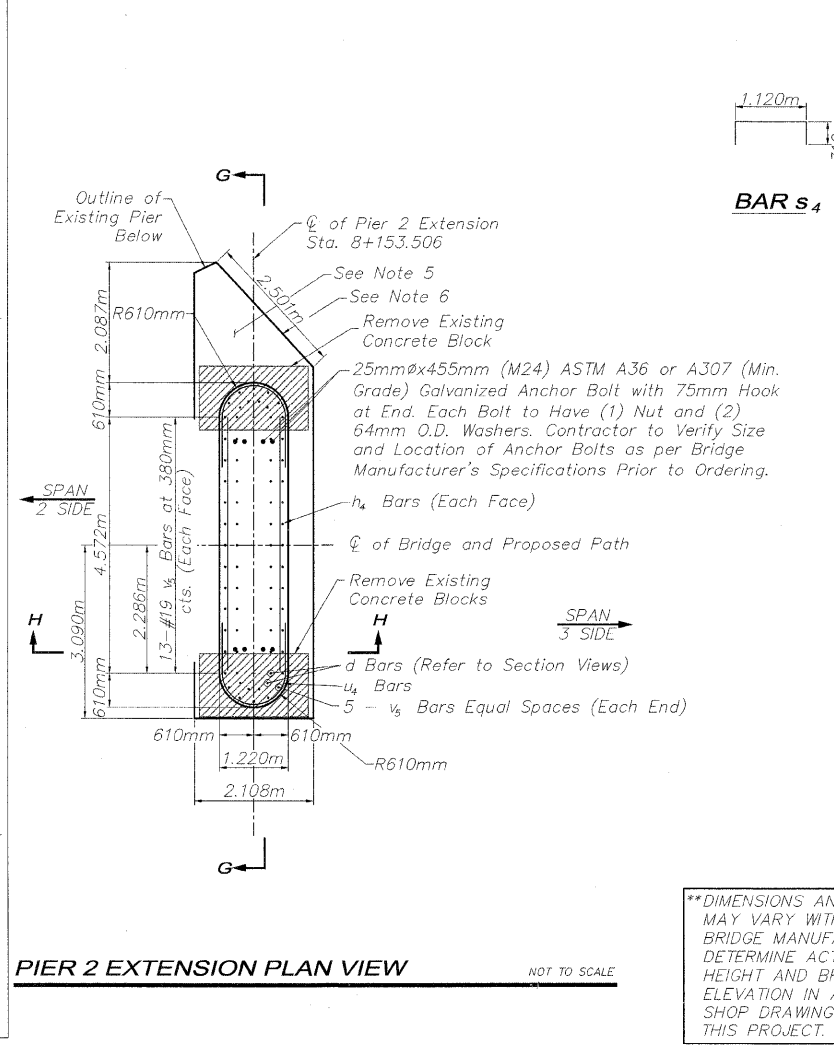


BRIDGE 99 NOTES
(Partial List - Refer to Next Sheet)

5. THE TOP PORTION OF THE EXISTING PIER/ABUTMENT CAPS SHALL BE REMOVED TO A MINIMUM DEPTH OF 150MM OR TO SOUND CONCRETE AND REPLACED AS SHOWN. THIS WORK SHALL BE IN ACCORDANCE WITH IDOT GBSP 53 "STRUCTURAL REPAIR OF CONCRETE" EXCEPT THAT THE NEW CONCRETE SHALL BE ANCHORED TO THE EXISTING CONCRETE WITH 12.7MM DIA. HOOK BOLTS SPACED AT 610MM MAX. CENTERS AND ONE LAYER OF NO. 13 REINFORCEMENT BARS AT 300MM CENTERS EACH WAY SHALL BE PLACED A MINIMUM OF 50MM CLEAR DISTANCE TO THE PROPOSED SURFACE. ALL MATERIAL AND LABOR REQUIRED TO COMPLETE THIS WORK WILL BE PAID FOR AT THE CONTRACT UNIT PRICE PER SQUARE METER FOR STRUCTURAL REPAIR OF CONCRETE (DEPTH GREATER THAN 125MM). REFER TO SPECIAL PROVISION FOR FURTHER DETAILS.

6. THE VERTICAL SURFACES OF THE EXISTING PIER/ABUTMENT WITH AREAS OF CRACKED, LOOSE, SPALLED AND/OR DETERIORATED CONCRETE SHALL BE REMOVED TO A MINIMUM DEPTH OF 100MM OR TO SOUND CONCRETE AND REPLACED WITH FORMED CONCRETE REPAIR ARE AS SHOWN HOWEVER, THIS LIMIT SHOULD NOT BE CONSIDERED AS A MINIMUM REMOVAL LIMIT. THE EXACT LIMITS WILL BE DETERMINED IN THE FIELD BY THE ENGINEER WITH THE CONTRACTOR AND SOME OF THE AREA WITHIN THE LIMITS SHOWN MAY NOT REQUIRE REMOVAL WHILE SOME AREAS BEYOND THE LIMITS SHOWN MAY BE ADDED. THIS WORK SHALL BE IN ACCORDANCE WITH IDOT GBSP 53 "STRUCTURAL REPAIR OF CONCRETE" EXCEPT THAT THE NEW CONCRETE SHALL BE ANCHORED TO THE EXISTING CONCRETE WITH 12.7MM DIA. HOOK BOLTS SPACED AT 610MM MAX. CENTERS AND ONE LAYER OF NO. 13 REINFORCEMENT BARS AT 300MM CENTERS EACH WAY SHALL BE PLACED A MINIMUM OF 50MM CLEAR DISTANCE TO THE PROPOSED SURFACE. ALL MATERIAL AND LABOR REQUIRED TO COMPLETE THIS WORK WILL BE PAID FOR AT THE CONTRACT UNIT PRICE PER SQUARE METER FOR STRUCTURAL REPAIR OF CONCRETE (DEPTH EQUAL TO OR LESS THAN 125MM). REFER TO SPECIAL PROVISION FOR FURTHER DETAILS.



BILL OF MATERIALS FOR PIER 1 EXTENSION

| Bar | No. | Size | Length | Shape |
|---|------|------|--------|-------|
| d | 42 | #16 | 0.890m | ┐ |
| h ₄ | 41 | #19 | 4.570m | — |
| s ₂ | 16 | #16 | 2.902m | ┐ |
| s ₃ | 16 | #16 | 2.044m | ┐ |
| u ₂ | 34 | #19 | 4.055m | ┌ |
| u ₃ | 6 | #19 | 3.070m | ┌ |
| ***v ₅ | 16 | #19 | 2.930m | — |
| ***v ₄ | 28 | #19 | 3.350m | — |
| Reinforcement Bars | | KG | 1270 | |
| Concrete Structures | | CM | 29.9 | |
| Drill and Grout Bars | Each | | 42 | |
| Anchor Bolts, M24 | Each | | 8 | |
| Structural Repair of Concrete (Depth greater than 125mm) | | SM | 16.8 | |
| Structural Repair of Concrete (Depth Equal to or Less Than 125mm) | | SM | 17.4 | |
| Concrete Removal Sp. | | SM | 2.6 | |

*** Trim Bars if Required to Fit.

BILL OF MATERIALS FOR PIER 2 EXTENSION

| Bar | No. | Size | Length | Shape |
|---|------|------|--------|-------|
| d | 42 | #16 | 0.890m | ┐ |
| h ₄ | 34 | #19 | 4.570m | — |
| s ₄ | 13 | #16 | 1.740m | ┐ |
| u ₄ | 34 | #19 | 3.579m | ┌ |
| ***v ₅ | 36 | #19 | 3.720m | — |
| Reinforcement Bars | | KG | 1010 | |
| Concrete Structures | | CM | 26.5 | |
| Drill and Grout Bars | Each | | 34 | |
| Anchor Bolts, M24 | Each | | 8 | |
| Structural Repair of Concrete (Depth greater than 125mm) | | SM | 16.9 | |
| Structural Repair of Concrete (Depth Equal to or Less Than 125mm) | | SM | 14.1 | |
| Concrete Removal Sp. | | SM | 5.1 | |

*** Trim Bars if Required to Fit.

REVISIONS

| NO. | ITEM | DATE |
|-----|------|------|
| | | |

PLOTTING SCALE: 1 : 100

DRAWN BY: FLH/CDS

CHECKED BY:

DATE: JUNE, 2009

McClure
Engineering Associates, Inc.

7282 Argus Drive Rookford, Illinois 61107-5837
(815) 398-2332 FAX (815) 398-2496
Design Firm License: Illinois 184-000816
Copyright 2009 By McClure Engineering Associates, Inc.

BRIDGE NO. 99 STA. 8+153.506
PECATONICA PRAIRIE PATH
STEPHENSON COUNTY SECTION 09-P4000-00-BT
JOB NUMBER: 04-28-98-037