

FREEMAN UNITED COAL MINING COMPANY

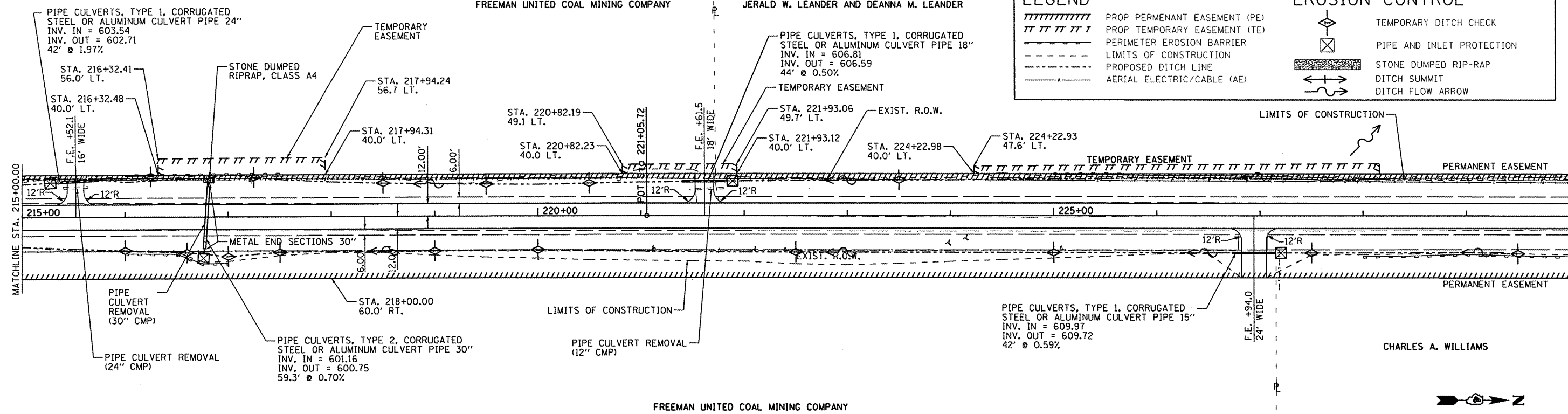
JERALD W. LEANDER AND DEANNA M. LEANDER

LEGEND

- PROP PERMANENT EASEMENT (PE)
- PROP TEMPORARY EASEMENT (TE)
- PERIMETER EROSION BARRIER
- LIMITS OF CONSTRUCTION
- PROPOSED DITCH LINE
- AERIAL ELECTRIC/CABLE (AE)

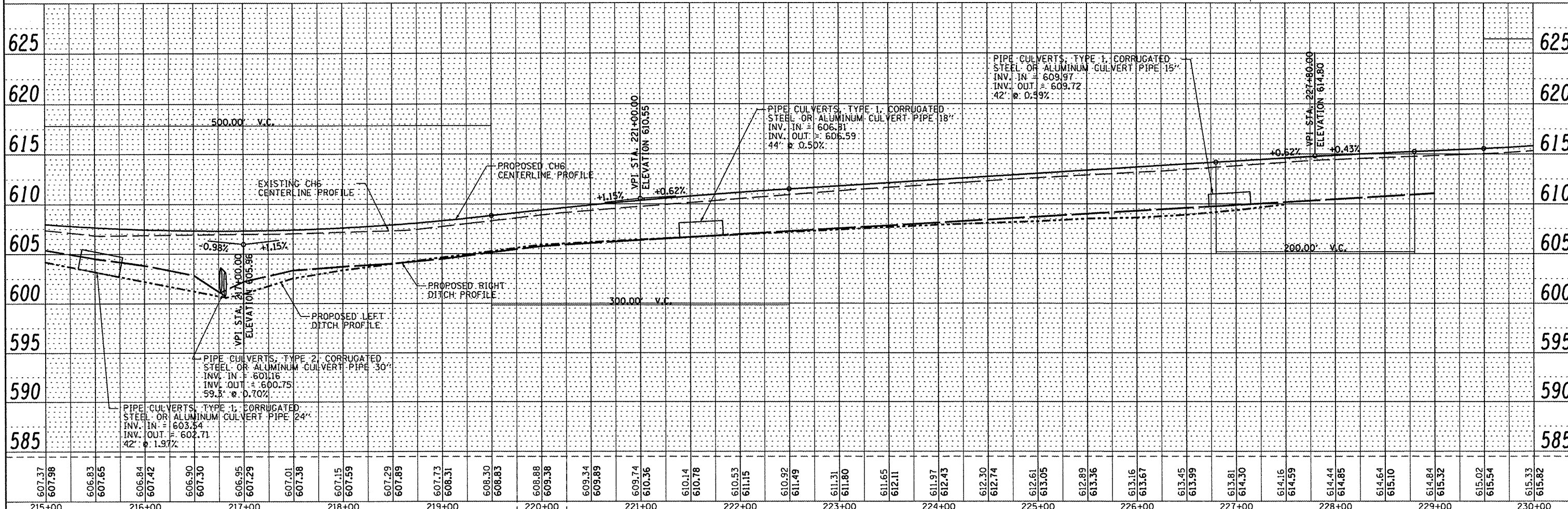
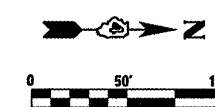
EROSION CONTROL

- TEMPORARY DITCH CHECK
- PIPE AND INLET PROTECTION
- STONE DUMPED RIP-RAP
- DITCH SUMMIT
- DITCH FLOW ARROW



FREEMAN UNITED COAL MINING COMPANY

CHARLES A. WILLIAMS



607.37 607.98	606.83 607.65	606.84 607.42	606.90 607.30	606.95 607.29	607.01 607.38	607.15 607.59	607.29 607.89	607.73 608.31	608.30 608.83	608.88 609.38	609.34 609.89	609.74 610.36	610.14 610.78	610.53 611.15	610.92 611.49	611.31 611.80	611.65 612.11	611.97 612.43	612.30 612.74	612.61 613.05	612.89 613.36	613.16 613.67	613.45 613.99	613.81 614.30	614.16 614.59	614.44 614.85	614.64 615.10	614.84 615.32	615.02 615.54	615.33 615.82
215+00	216+00	217+00	218+00	219+00	220+00	221+00	222+00	223+00	224+00	225+00	226+00	227+00	228+00	229+00	230+00															

DATE	
BY	
REVISION	
NO.	
DATE	
BY	
REVISION	
NO.	
DATE	
BY	
REVISION	
NO.	

MAURER & STUTZ, INC.
ENGINEERS SURVEYORS

7616 NORTH HARKER DRIVE
PEORIA, ILLINOIS 61615
PH. (309) 693-7615
FAX (309) 693-7616

DATE	
BY	
REVISION	
NO.	
DATE	
BY	
REVISION	
NO.	

STATE OF ILLINOIS DEPARTMENT OF TRANSPORTATION

FULTON COUNTY HIGHWAY 6 PLAN & PROFILE

SCALE: 1" = 50' SHEET NO. 7 OF 8 SHEETS STA. 215+00 TO STA. 230+00

F.A.S. RT#	SECTION	COUNTY	TOTAL SHEETS	SHEET NO.
1458	03-00125-02-RS	FULTON	66	17
CONTRACT NO. 89415				