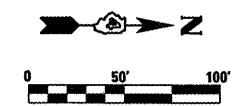
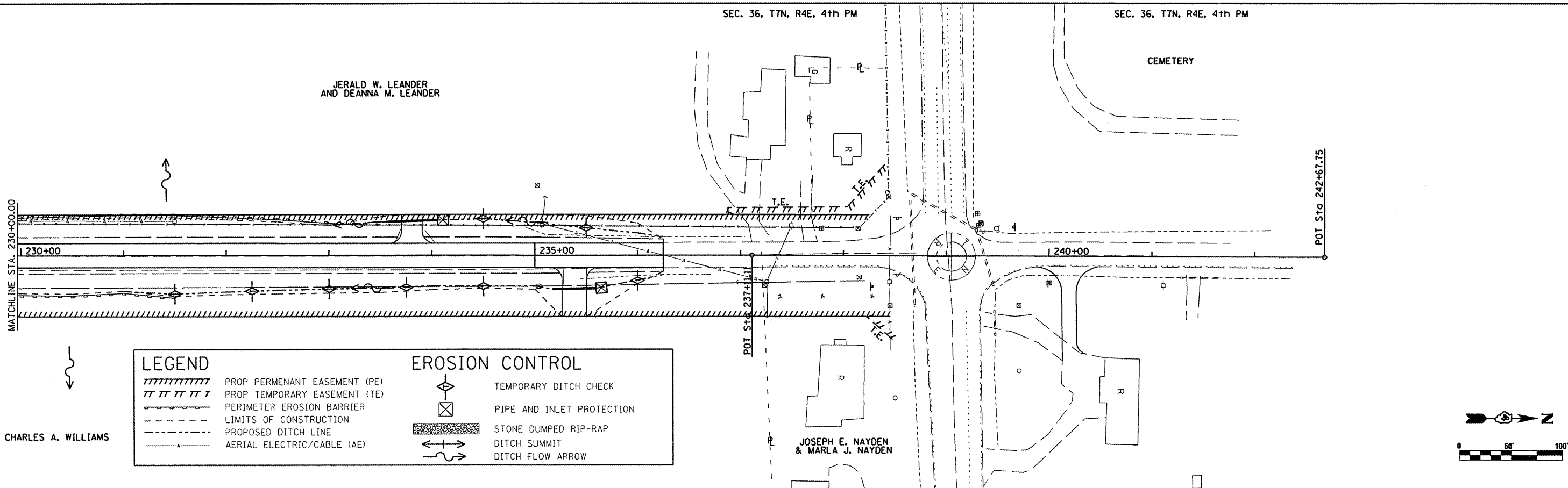


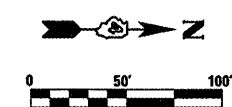
LEGEND		EROSION CONTROL	
	PROP PERMANENT EASEMENT (PE)		TEMPORARY DITCH CHECK
	PROP TEMPORARY EASEMENT (TE)		PIPE AND INLET PROTECTION
	PERIMETER EROSION BARRIER		STONE DUMPED RIP-RAP
	LIMITS OF CONSTRUCTION		DITCH SUMMIT
	PROPOSED DITCH LINE		DITCH FLOW ARROW
	AERIAL ELECTRIC/CABLE (AE)		



**MAURER & STUTZ, INC.**  
ENGINEERS  
7615 NORTH HARKER DRIVE  
PEORIA, ILLINOIS 61615  
PH. (309) 693-7615  
FAX (309) 693-7616



LEGEND		EROSION CONTROL	
	PROP PERMANENT EASEMENT (PE)		TEMPORARY DITCH CHECK
	PROP TEMPORARY EASEMENT (TE)		PIPE AND INLET PROTECTION
	PERIMETER EROSION BARRIER		STONE DUMPED RIP-RAP
	LIMITS OF CONSTRUCTION		DITCH SUMMIT
	PROPOSED DITCH LINE		DITCH FLOW ARROW
	AERIAL ELECTRIC/CABLE (AE)		



FILE NAME = #FILE#	USER NAME = #USER#	DESIGNED - --- DRAWN - ---	REVISED - --- REVISED - ---	<b>STATE OF ILLINOIS DEPARTMENT OF TRANSPORTATION</b>	<b>FULTON COUNTY HIGHWAY 6 EROSION CONTROL PLAN</b>	F.A.S. RTE. 1458	SECTION 03-00125-02-RS	COUNTY FULTON	TOTAL SHEETS 66	SHEET NO. 23		
	PLOT SCALE = #SCALE#	CHECKED - ---	REVISED - ---			SCALE:	SHEET NO. 4 OF 4 SHEETS	STA. 215+00 TO STA. 242+00	CONTRACT NO. 89415			
	PLOT DATE = #DATE#	DATE - ---	REVISED - ---			FED. ROAD DIST. NO. - [ILLINOIS] FED. AID PROJECT						