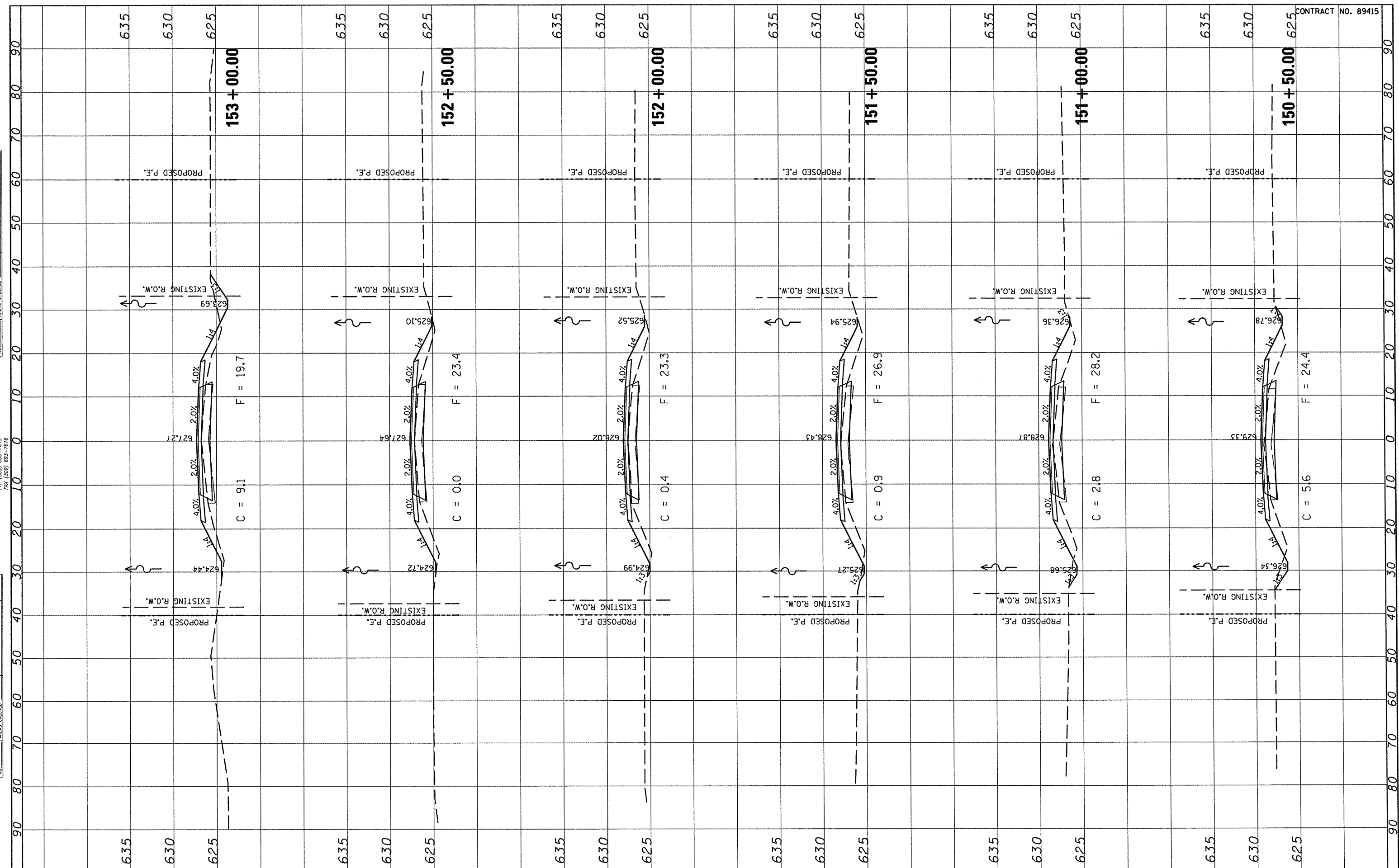


FINAL SURVEY	SURVEYED	BY	DATE
NOTE BOOK NO.	PLOTTED		
	TEMPLATE		
	AREAS CHECKED		



ORIGINAL SURVEY	SURVEYED	BY	DATE
NOTE BOOK NO.	PLOTTED		
	TEMPLATE		
	AREAS CHECKED		



CONTRACT NO. 89415

FILE NAME =	USER NAME = *USER*	DESIGNED -	REVISED -	STATE OF ILLINOIS DEPARTMENT OF TRANSPORTATION	FULTON COUNTY HIGHWAY 6 CROSS SECTIONS			F.A.S. RTE.	SECTION	COUNTY	TOTAL SHEETS	SHEET NO.
#FILE#		DRAWN -	REVISED -		1458	03-00125-02-RS	FULTON	66	35			
		CHECKED -	REVISED -		CONTRACT NO. 89415							
		DATE -	REVISED -		SCALE:	SHEET NO.	OF	SHEETS	STA. 150+50.00 TO STA. 153+00.00	FED. ROAD DIST. NO.	ILLINOIS FED. AID PROJECT	