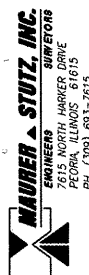
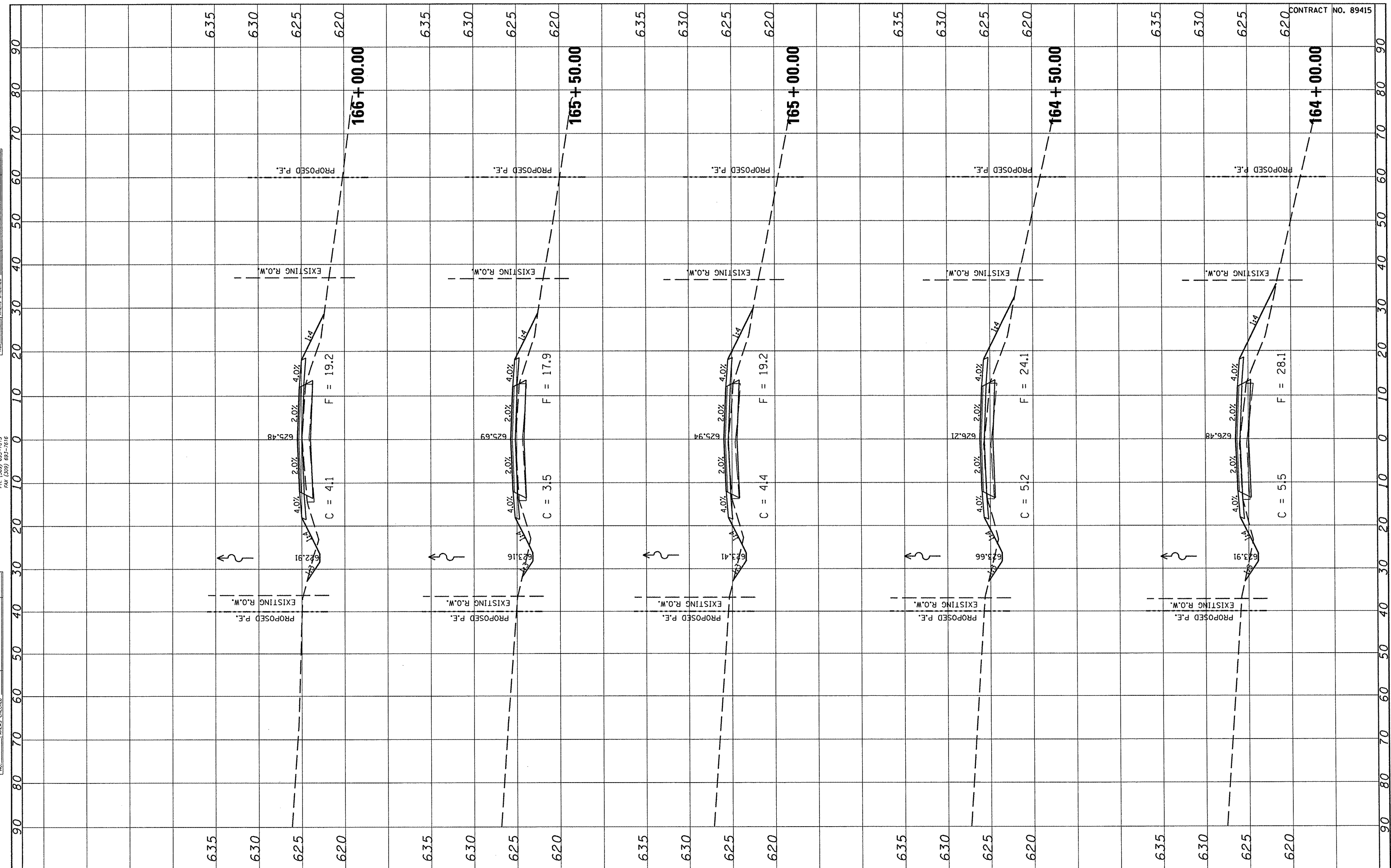


FINAL SURVEY	SUBMITTED	BY	DATE
NOTE BOOK	PLOTTED		
AREAS CHECKED	TEMPLATE		
NO.	AREAS CHECKED		



ORIGINAL SURVEY	SUBMITTED	BY	DATE
NOTE BOOK	PLOTTED		
AREAS CHECKED	TEMPLATE		
NO.	AREAS CHECKED		



CONTRACT NO. 89415

FILE NAME =	USER NAME = #USER#
#FILE#	DESIGNED -
	DRAWN -
	CHECKED -
	DATE -
	REVISED -
	REVISED -
	REVISED -
	REVISED -

PLOT SCALE = #SCALE#	DESIGNED -	REVISED -
PLOT DATE = #DATE#	DRAWN -	REVISED -
	CHECKED -	REVISED -
	DATE -	REVISED -

**STATE OF ILLINOIS
DEPARTMENT OF TRANSPORTATION**

**FULTON COUNTY HIGHWAY 6
CROSS SECTIONS**

SCALE: SHEET NO. OF SHEETS STA. 164+00.00 TO STA. 166+00.00

F.A.S. RTE. 1458	SECTION 03-00125-02-RS	COUNTY FULTON	TOTAL SHEETS 66	SHEET NO. 40
FED. ROAD DIST. NO. [ILLINOIS] FED. AID PROJECT		CONTRACT NO. 89415		