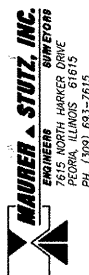
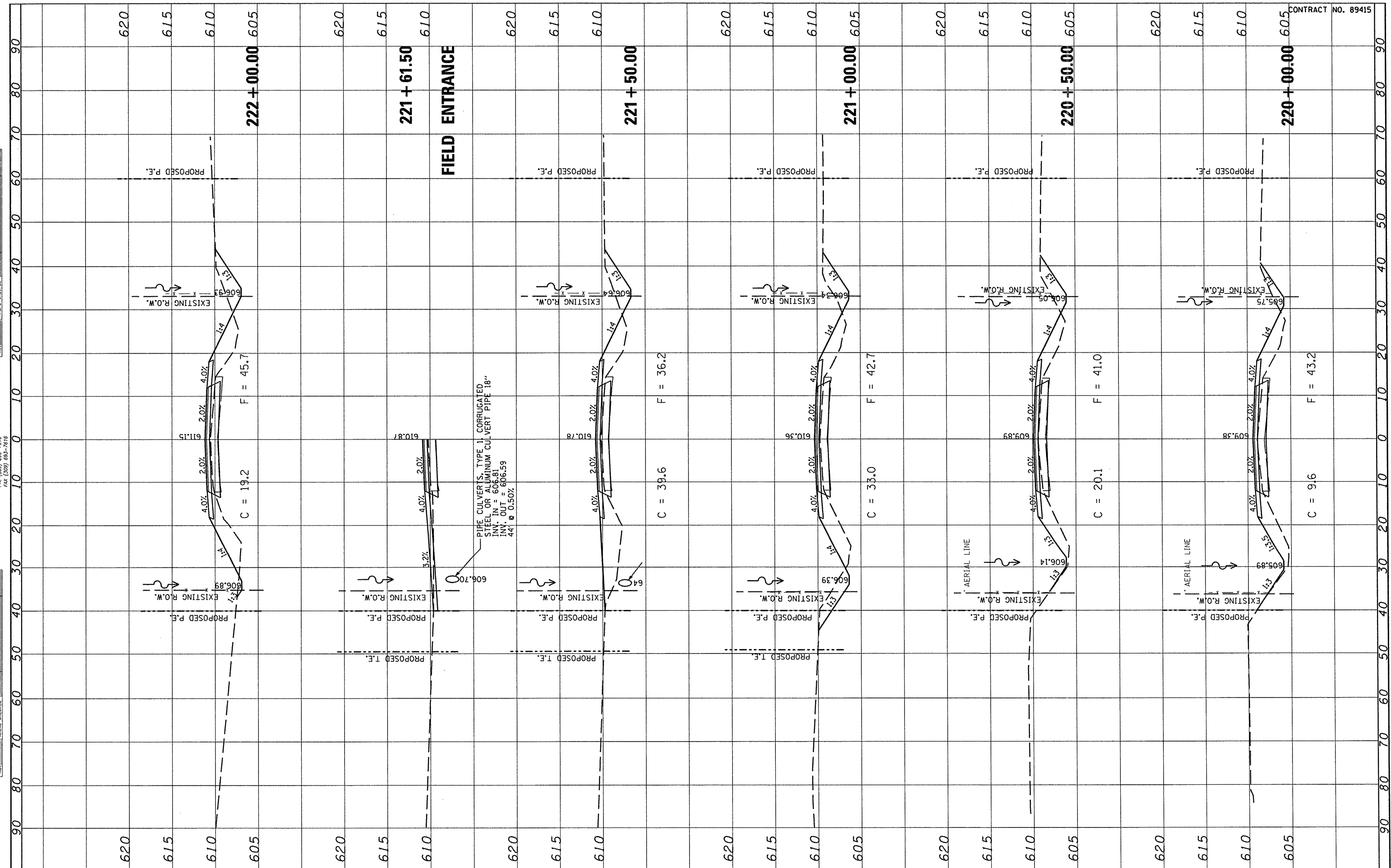


FINAL SURVEY	BY	DATE
TEMPLATED		
AREAS CHECKED		
AREAS CHECKED		



ORIGINAL SURVEY	BY	DATE
TEMPLATED		
AREAS CHECKED		
AREAS CHECKED		



FILE NAME *	USER NAME *#USER*	DESIGNED -	REVISED -	STATE OF ILLINOIS DEPARTMENT OF TRANSPORTATION	FULTON COUNTY HIGHWAY 6 CROSS SECTIONS			F.A.S. RTE. 1458	SECTION 03-00125-02-RS	COUNTY FULTON	TOTAL SHEETS 66	SHEET NO. 61
#FILE#		DRAWN -	REVISED -		SCALE:	SHEET NO. OF	SHEETS	STA. 220+00.00 TO STA. 222+00.00	CONTRACT NO. 89415			
		CHECKED -	REVISED -						ILLINOIS FED. AID PROJECT			
		DATE -	REVISED -									