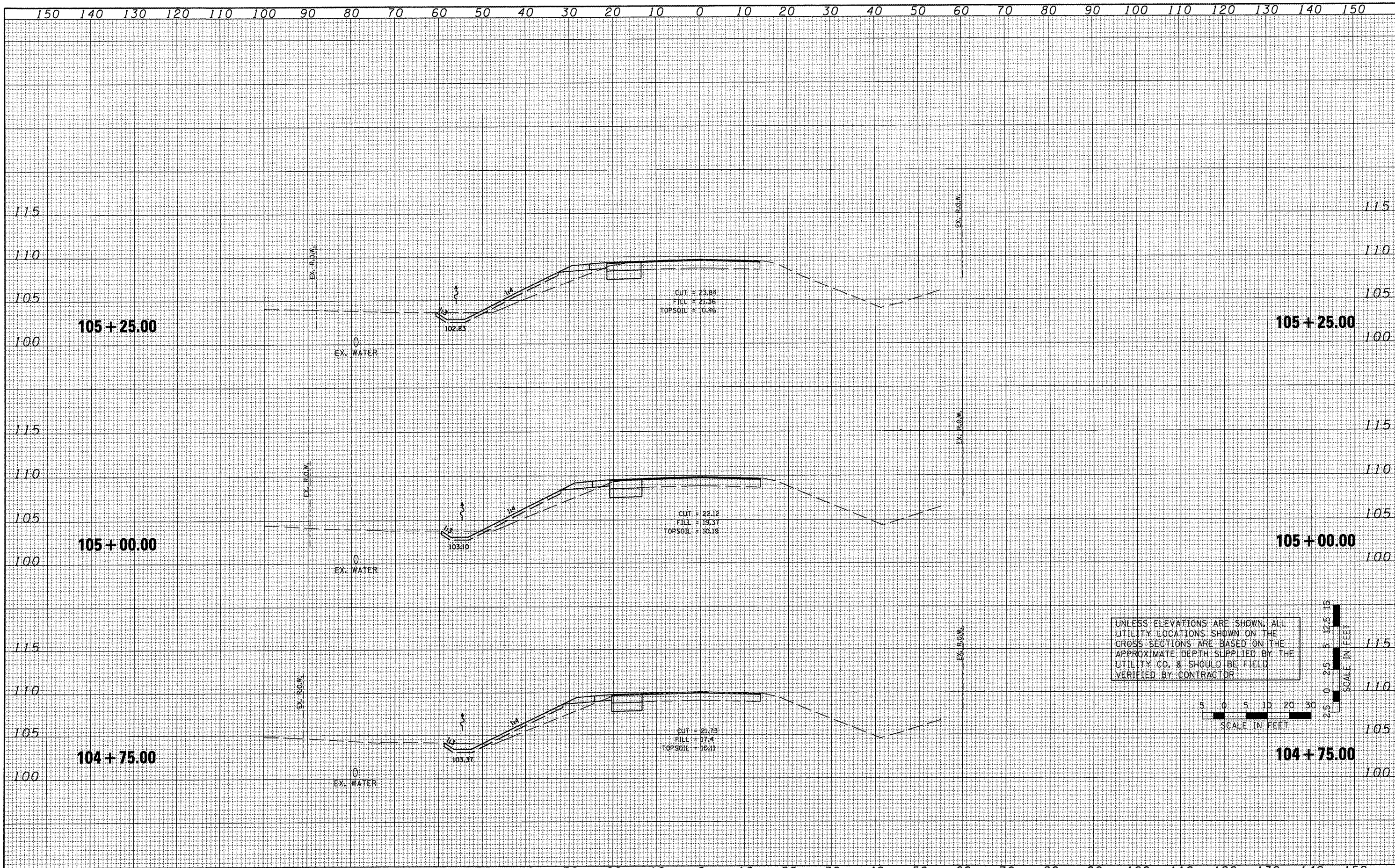


BY	DATE
SURVEYED	
PLOTTED	
NOTE BOOK	
AREAS	
CHECKED	
NO.	

BY	DATE
SURVEYED	
PLOTTED	
NOTE BOOK	
AREAS	
CHECKED	
NO.	



FILE NAME =
#FILEL#

USER NAME =	DESIGNED -	REVISED -
	DRAWN -	REVISED -
PLOT SCALE =	CHECKED -	REVISED -
PLOT DATE = 07/09/09	DATE -	REVISED -

**STATE OF ILLINOIS
DEPARTMENT OF TRANSPORTATION**

**TAZEWELL COUNTY ACCESS ROAD/ILLINOIS ROUTE 9
CROSS SECTIONS - ILLINOIS ROUTE 9**

SCALE: AS SHOWN SHEET NO. OF SHEETS STA. TO STA.

F.A.P. RTE. 693	SECTION 06-00000-00-FP	COUNTY TAZEWELL	TOTAL SHEETS 42	SHEET NO. 28
CONTRACT NO. 89531			ILLINOIS FED. AID PROJECT	