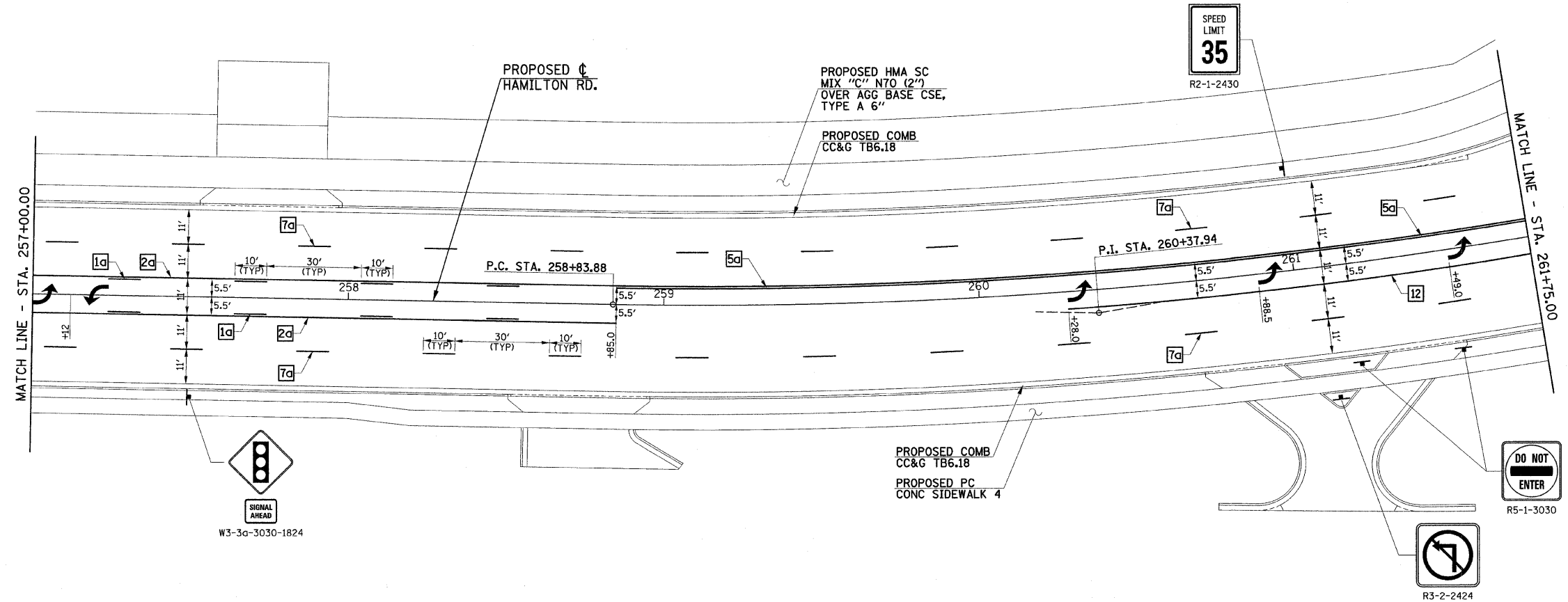
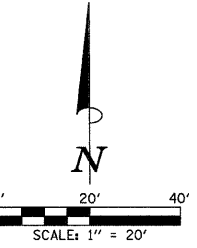
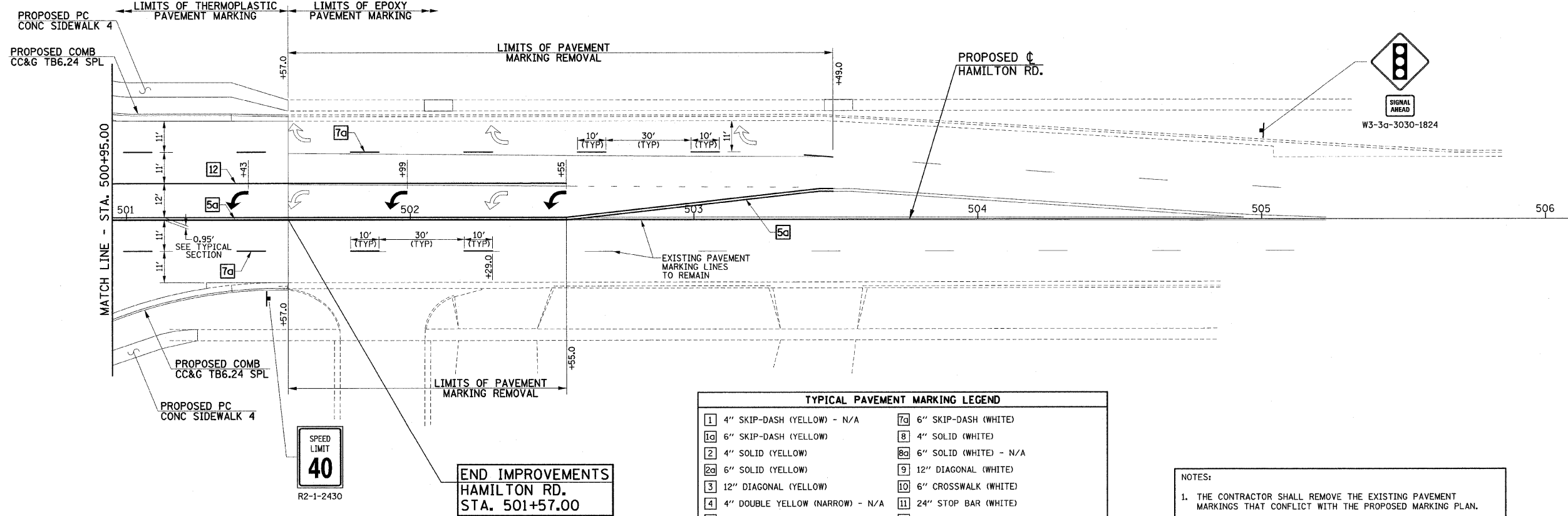


F.A.U. RTE.	SECTION	COUNTY	TOTAL SHEETS	SHEET NO.
6371	93-00295-03-PV	MCLEAN	109	61
STA. 257+00.00 TO STA. 506+00.00				
ILLINOIS F.A. PROJ. NO. M-5227(046)				
CONTRACT NO. 91351				



PROPOSED  $\phi$   
HAMILTON RD.  
CURVE DATA  
P.I. STA. 260+37.94  
 $\Delta = 11^{\circ}00'00''$   
D = 3'34.52"  
T = 154.06'  
R = 1600.00'  
L = 307.18'  
E = 7.40'  
P.C. STA. 258+83.88  
P.T. STA. 261+91.06



TYPICAL PAVEMENT MARKING LEGEND	
1 4" SKIP-DASH (YELLOW) - N/A	7a 6" SKIP-DASH (WHITE)
1a 6" SKIP-DASH (YELLOW)	8 4" SOLID (WHITE)
2 4" SOLID (YELLOW)	8a 6" SOLID (WHITE) - N/A
2a 6" SOLID (YELLOW)	9 12" DIAGONAL (WHITE)
3 12" DIAGONAL (YELLOW)	10 6" CROSSWALK (WHITE)
4 4" DOUBLE YELLOW (NARROW) - N/A	11 24" STOP BAR (WHITE)
5 RESERVED	12 8" SOLID (WHITE)
5a 6" DOUBLE YELLOW (WIDE)	13 4" LANE LINE EXTENSIONS (WHITE) - N/A
6 RESERVED	14 RESERVED
7 4" SKIP-DASH (WHITE)	

NOTES:  
1. THE CONTRACTOR SHALL REMOVE THE EXISTING PAVEMENT MARKINGS THAT CONFLICT WITH THE PROPOSED MARKING PLAN.  
2. THE PROPOSED TRAFFIC CONTROL SIGNS SHOWN WILL BE FURNISHED AND INSTALLED BY OTHERS AND ARE FOR INFORMATION ONLY. THE CONTRACTOR SHALL NOTIFY THE ENGINEER A MINIMUM OF 14 DAYS PRIOR TO OPENING THE PROPOSED ROADWAYS TO TRAFFIC. THE ENGINEER WILL COORDINATE THE SIGN INSTALLATION WITH THE CITY OF BLOOMINGTON.

ILLINOIS DEPARTMENT OF TRANSPORTATION  
**HAMILTON ROAD  
PAVEMENT MARKING**

DATE : 6-09  
DRAWN BY : J.L.B.  
CHECKED BY : R.L.H.

SCALE : 1"=20'  
SHEET 61 OF 109 SHEETS B0110094