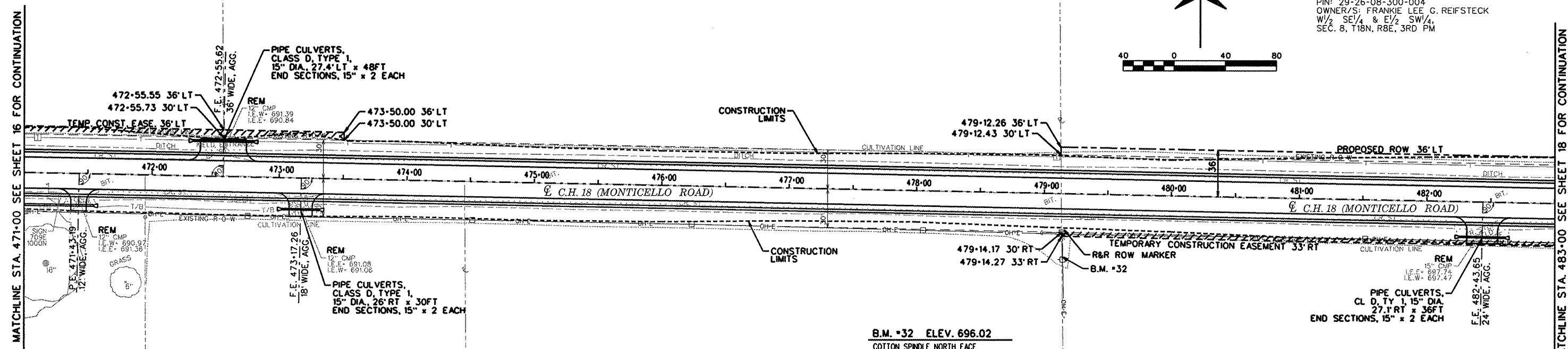
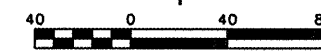


ROUTE NO.	SECTION	COUNTY	TOTAL SHEETS	SHEET NO.
MONTICELLO RD. CH 18 (FAS 531)	07-00419-00-RS	CHAMPAIGN	162	17
STA.	TO STA.			
F.H.W.A. REG.	ILLINOIS	PROJECT	ARA-HSP-531(108)	

**PARCEL 56**  
 PIN: 29-26-08-300-001  
 OWNER/S: ROBERT W. BOND  
 W<sup>1</sup>/<sub>2</sub> SW<sup>1</sup>/<sub>4</sub>, SW<sup>1</sup>/<sub>4</sub> & NW<sup>1</sup>/<sub>4</sub> SW<sup>1</sup>/<sub>4</sub>  
 SEC. 8, T18N, R8E, 3RD PM

**PARCEL 59**  
 PIN: 29-26-08-300-002  
 OWNER/S: ROBERT W. & LOIS P. BOND  
 E<sup>1</sup>/<sub>2</sub> SW<sup>1</sup>/<sub>4</sub> SW<sup>1</sup>/<sub>4</sub> SEC. 8, T18N,  
 R8E, 3RD PM

**PARCEL 61**  
 PIN: 29-26-08-300-004  
 OWNER/S: FRANKIE LEE G. REIFSTECK  
 W<sup>1</sup>/<sub>2</sub> SE<sup>1</sup>/<sub>4</sub> & E<sup>1</sup>/<sub>2</sub> SW<sup>1</sup>/<sub>4</sub>  
 SEC. 8, T18N, R8E, 3RD PM



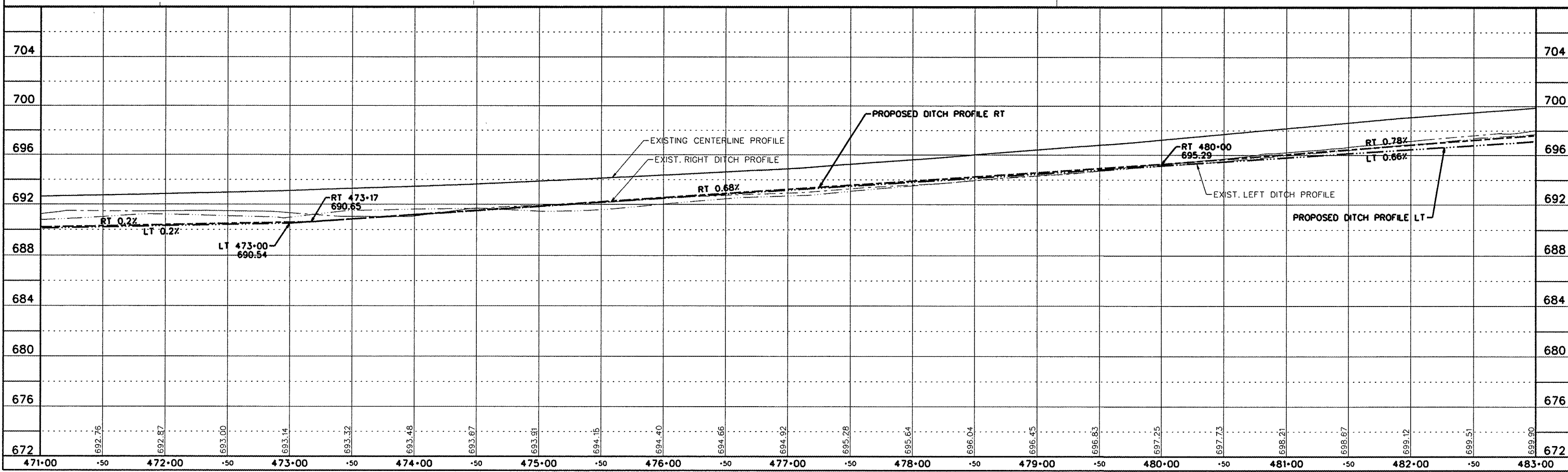
**PARCEL 58**  
 PIN: 29-26-17-100-006  
 OWNER/S: EDWARD A. & MARY L. THOMPSON  
 PT. NW<sup>1</sup>/<sub>4</sub>, SEC. 17, T18N,  
 R8E, 3RD PM

**PARCEL 57**  
 PIN: 29-26-17-100-006  
 OWNER/S: JOANNE L. SMITH TTEE/  
 JOANNE L. SMITH TRUST  
 W<sup>1</sup>/<sub>2</sub> NW<sup>1</sup>/<sub>4</sub>, SEC. 17, T18N, R8E, 3RD PM

**PARCEL 60**  
 PIN: 29-26-17-100-007  
 OWNER/S: ROBERT W. & LOIS P. BOND  
 W<sup>1</sup>/<sub>2</sub> NW<sup>1</sup>/<sub>4</sub>, SEC. 17, T18N, R8E, 3RD PM

**PARCEL 62A**  
 PIN: 29-26-17-100-009  
 OWNER/S: DAVID R. SMITH  
 W<sup>1</sup>/<sub>2</sub> E<sup>1</sup>/<sub>2</sub> NW<sup>1</sup>/<sub>4</sub>  
 SEC. 17, T18N, R8E, 3RD PM

**B.M. #32 ELEV. 696.02**  
 COTTON SPINDLE NORTH FACE  
 UTILITY POLE



PP32.dgn 7/20/2009 8:31:09 AM